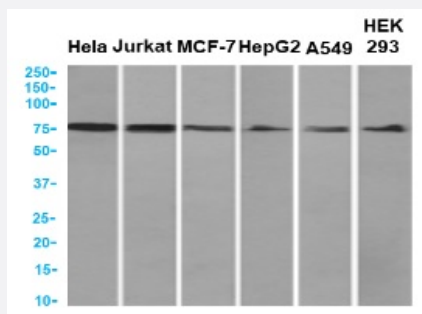


RecomAb™

# XPNPEP1 recombinant monoclonal antibody, clone SAIC-07E-1

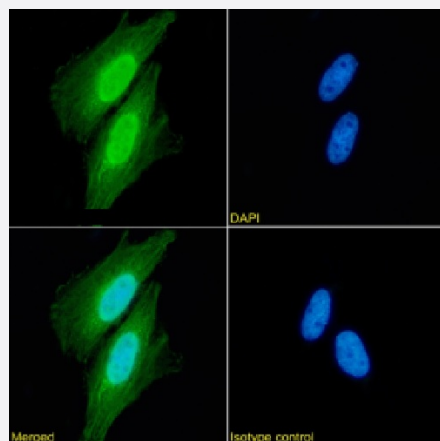
Catalog # RAB03971      Size 200 ug

## Applications



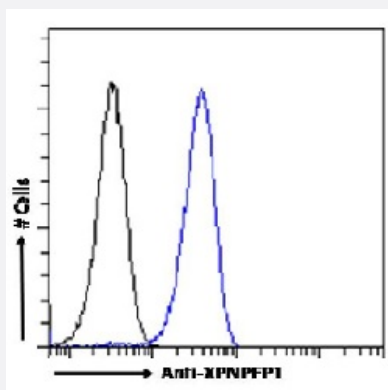
### Western Blot

Western blot analysis of HeLa, Jurkat, MCF7, HepG2, A549, HEK293 cell lysates using anti-XPNPEP1 recombinant monoclonal antibody, clone SAIC-07E-1 (Cat # RAB03971).



### Immunofluorescence

Immunofluorescence analysis of XPNPEP1 (green) in HeLa cells using human anti-XPNPEP1 recombinant monoclonal antibody, clone SAIC-07E-1 (Cat # RAB03971), and DAPI (blue).



### Flow Cytometry

Flow-cytometry analysis of XPNPEP1 in HeLa cells using human anti-XPNPEP1 recombinant monoclonal antibody, clone SAIC-07E-1 (Cat # RAB03971).

## Specification

<b>Product Description</b>	Rabbit recombinant monoclonal antibody raised against synthetic peptide corresponding to peptide "TSLSLDEVYLIDSGAQYK" derived from Xaa-Pro aminopeptidase 1 conjugated to KLH.
<b>Antibody Species</b>	Rabbit
<b>Immunogen</b>	Original antibody is raised against recombinant protein corresponding to peptide "TSLSLDEVYLIDSGAQYK" derived from Xaa-Pro aminopeptidase 1 conjugated to KLH.
<b>Sequence</b>	TSLSLDEVYLIDSGAQYK
<b>Reactivity</b>	Human
<b>Form</b>	Liquid
<b>Isotype</b>	IgG kappa
<b>Recommend Usage</b>	ELISA Flow cytometry Immunofluorescence Immuno-MRM  Western Blot The optimal working dilution should be determined by the end user.
<b>Storage Buffer</b>	In PBS (0.02% Proclin 300)
<b>Storage Instruction</b>	Store at 4°C for 3 months. For long term storage store at -20°C. Aliquot to avoid repeated freezing and thawing.

## Applications

- Western Blot

Western blot analysis of HeLa, Jurkat, MCF7, HepG2, A549, HEK293 cell lysates using anti-XPNPEP1 recombinant monoclonal antibody, clone SAIC-07E-1 (Cat # RAB03971).

- Immunofluorescence

Immunofluorescence analysis of XPNPEP1 (green) in HeLa cells using human anti-XPNPEP1 recombinant monoclonal antibody, clone SAIC-07E-1 (Cat # RAB03971), and DAPI(blue).

- Enzyme-linked Immunoabsorbent Assay

- Flow Cytometry

Flow-cytometry analysis of XPNPEP1 in HeLa cells using human anti-XPNPEP1 recombinant monoclonal antibody, clone SAIC-07E-1 (Cat # RAB03971).

- Immuno-MRM (multiple reaction monitoring)

## Gene Info — XPNPEP1

Entrez GeneID [7511](#)

Protein Accession# [Q9NQW7](#)

Gene Name XPNPEP1

Gene Alias SAMP, XPNPEP, XPNPEPL, XPNPEPL1

Gene Description X-prolyl aminopeptidase (aminopeptidase P) 1, soluble

Omim ID [602443](#)

Gene Ontology [Hyperlink](#)

**Gene Summary** X-prolyl aminopeptidase (EC 3.4.11.9) is a proline-specific metalloaminopeptidase that specifically catalyzes the removal of any unsubstituted N-terminal amino acid that is adjacent to a penultimate proline residue. Because of its specificity toward proline, it has been suggested that X-prolyl aminopeptidase is important in the maturation and degradation of peptide hormones, neuropeptides, and tachykinins, as well as in the digestion of otherwise resistant dietary protein fragments, thereby complementing the pancreatic peptidases. Deficiency of X-prolyl aminopeptidase results in excretion of large amounts of imino-oligopeptides in urine (Blau et al., 1988 [PubMed 3141711]).[supplied by OMIM]

**Other Designations** OTTHUMP00000020457|OTTHUMP00000058856|X-prolyl aminopeptidase (aminopeptidase P) 1, soluble (SAMP, XPNPEP, XPNPEPL)|X-prolyl aminopeptidase (aminopeptidase P)-like

## Disease

- [Alzheimer Disease](#)
- [Biliary Atresia](#)
- [Genetic Predisposition to Disease](#)
- [Tobacco Use Disorder](#)