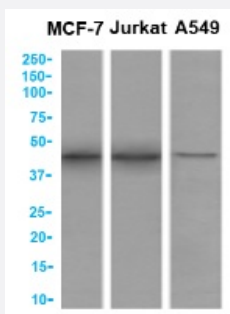


RecomAb™

SETD7 recombinant monoclonal antibody, clone RAB-C220

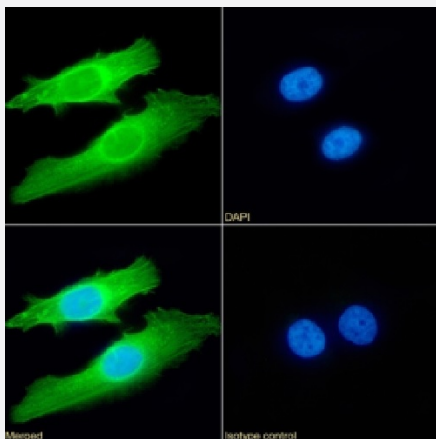
Catalog # RAB03843 Size 200 ug

Applications



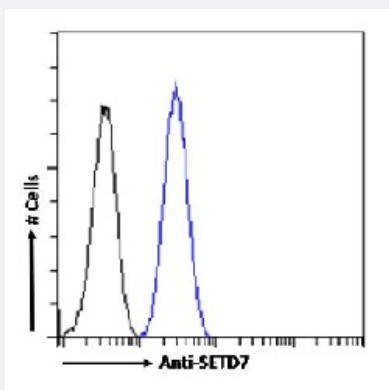
Western Blot

Western blot analysis of MCF7, Jurkat, A549 cell lysate using anti-SETD7 recombinant monoclonal antibody, clone RAB-C220 (Cat # RAB03843).



Immunofluorescence

Immunofluorescence analysis of SETD7 (green) in HeLa cells using human anti-SETD7 recombinant monoclonal antibody, clone RAB-C220 (Cat # RAB03843), and DAPI (blue).



Flow Cytometry

Flow-cytometry analysis of SETD7 in HeLa cells using human anti-SETD7 recombinant monoclonal antibody, clone RAB-C220 (Cat # RAB03843).

Specification

Product Description	Rabbit recombinant monoclonal antibody raised against recombinant antibody (rAb) phage display recognizing SETD7 protein under non-denaturing conditions.
Antibody Species	Rabbit
Immunogen	Original antibody is raised against recombinant protein corresponding to recombinant antibody (rAb) phage display recognizing SETD7 protein under non-denaturing conditions.
Reactivity	Human
Form	Liquid
Conjugation	Unconjugated
Concentration	batch dependent
Isotype	IgG
Recommend Usage	ChIP ELISA Flow cytometry Immunofluorescence Immunoprecipitation-MS spiked-Immunoprecipitation Western Blot The optimal working dilution should be determined by the end user.
Storage Buffer	In PBS with 0.02% Proclin 300
Storage Instruction	Store at 4°C for 3 months. For long term storage store at -20°C. Aliquot to avoid repeated freezing and thawing.
Note	For research use only.

Applications

- ChIP
- Western Blot

Western blot analysis of MCF7, Jurkat, A549 cell lysate using anti-SETD7 recombinant monoclonal antibody, clone RAB-C220 (Cat # RAB03843).

- Immunofluorescence

Immunofluorescence analysis of SETD7 (green) in HeLa cells using human anti-SETD7 recombinant monoclonal antibody, clone RAB-C220 (Cat # RAB03843), and DAPI(blue).

- Immunoprecipitation

- Enzyme-linked Immunoabsorbent Assay

- Flow Cytometry

Flow-cytometry analysis of SETD7 in HeLa cells using human anti-SETD7 recombinant monoclonal antibody, clone RAB-C220 (Cat # RAB03843).

Gene Info — SETD7

Entrez GeneID	80854
Protein Accession#	Q8WTS6
Gene Name	SETD7
Gene Alias	FLJ21193, KIAA1717, KMT7, SET7, SET7/9, SET9
Gene Description	SET domain containing (lysine methyltransferase) 7
Omim ID	606594
Gene Ontology	Hyperlink
Other Designations	H3-K4-HMTase SET domain-containing protein 7 histone H3-K4 methyltransferase histone H3-lysine 4-specific methyltransferase

Pathway

- [Lysine degradation](#)

Disease

- [Tobacco Use Disorder](#)