

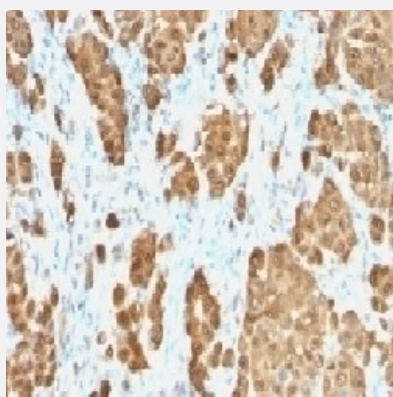
RecomAb™

S100B recombinant monoclonal antibody, clone S100B/1706R

Catalog # RAB03831

Size 100 ug

Applications



Immunohistochemistry (Formalin/PFA-fixed paraffin-embedded sections)

Immunohistochemistry (Formalin-fixed paraffin-embedded sections) of human melanoma with anti-S100B recombinant monoclonal antibody, clone S100B/1706R (Cat # RAB03831).

Specification

Product Description	Rabbit recombinant monoclonal antibody raised against full length human recombinant S100B protein.
Antibody Species	Rabbit
Immunogen	Original antibody is raised against recombinant protein corresponding to full length human recombinant S100B protein
Reactivity	Human
Form	Liquid
Conjugation	Unconjugated
Purification	Protein A affinity chromatography
Concentration	0.2 mg/mL
Isotype	IgG

Recommend Usage	Flow cytometry (0.5-1 ug/million cells in 0.1mL) Immunofluorescence (1-2 ug/mL) Immunohistochemistry (Formalin/PFA-fixed paraffin-embedded sections)(0.25-0.5 ug/mL for 30 min at RT) Western Blot (0.5-1 ug/mL) The optimal working dilution should be determined by the end user.
------------------------	---

Storage Buffer	In PBS, 0.1 mg/ml BSA, 0.05% sodium azide
-----------------------	---

Storage Instruction	Store at 2~8°C. Aliquot to avoid repeated freezing and thawing.
----------------------------	--

Note	Optimal dilutions for each application to be determined by the researcher
-------------	---

Applications

- Western Blot
- Immunohistochemistry (Formalin/PFA-fixed paraffin-embedded sections)
Immunohistochemistry (Formalin-fixed paraffin-embedded sections) of human melanoma with anti-S100B recombinant monoclonal antibody, clone S100B/1706R (Cat # RAB03831).
- Immunofluorescence
- Flow Cytometry

Gene Info — S100B

Entrez GeneID	6285
----------------------	----------------------

Protein Accession#	P04271
---------------------------	------------------------

Gene Name	S100B
------------------	-------

Gene Alias	NEF, S100, S100beta
-------------------	---------------------

Gene Description	S100 calcium binding protein B
-------------------------	--------------------------------

Omim ID	176990
----------------	------------------------

Gene Ontology	Hyperlink
----------------------	---------------------------

Gene Summary

The protein encoded by this gene is a member of the S100 family of proteins containing 2 EF-hand calcium-binding motifs. S100 proteins are localized in the cytoplasm and/or nucleus of a wide range of cells, and involved in the regulation of a number of cellular processes such as cell cycle progression and differentiation. S100 genes include at least 13 members which are located as a cluster on chromosome 1q21; however, this gene is located at 21q22.3. This protein may function in Neurite extension, proliferation of melanoma cells, stimulation of Ca²⁺ fluxes, inhibition of PKC-mediated phosphorylation, astrocytosis and axonal proliferation, and inhibition of microtubule assembly. Chromosomal rearrangements and altered expression of this gene have been implicated in several neurological, neoplastic, and other types of diseases, including Alzheimer's disease, Down's syndrome, epilepsy, amyotrophic lateral sclerosis, melanoma, and type I diabetes. [provided by RefSeq]

Other Designations

OTTHUMP00000174958|S-100 calcium-binding protein, beta chain|S100 beta|S100 calcium binding protein, beta (neural)|S100 calcium-binding protein, beta|S100 calcium-binding protein, beta (neural)

Disease

- [Alzheimer disease](#)
- [Bipolar Disorder](#)
- [Cognition Disorders](#)
- [Dementia](#)
- [Depressive Disorder](#)
- [Diseases in Twins](#)
- [Genetic Predisposition to Disease](#)
- [Mental Disorders](#)
- [Neuropsychological Tests](#)
- [Psychotic Disorders](#)
- [Schizophrenia](#)