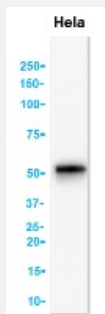


RecomAb™

KRT7 recombinant monoclonal antibody, clone KRT7/1499R

Catalog # RAB03811 Size 100 ug

Applications



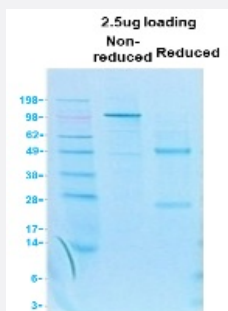
Western Blot

Western blot analysis of human HeLa cell lysate using anti-Cytokeratin 7 recombinant monoclonal antibody, clone KRT7/1499R (Cat # RAB03811).



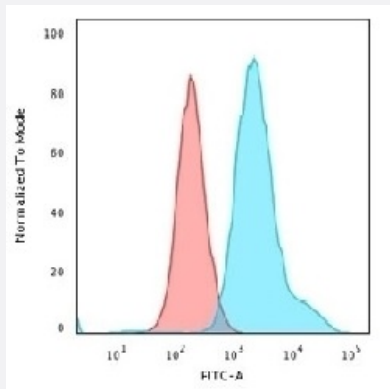
Immunohistochemistry (Formalin/PFA-fixed paraffin-embedded sections)

Immunohistochemistry (Formalin-fixed paraffin-embedded sections) of human oviduct with anti-Cytokeratin 7 recombinant monoclonal antibody, clone KRT7/1499R (Cat # RAB03811).



SDS-PAGE

SDS-PAGE analysis of purified, BSA-free recombinant Cytokeratin 7 monoclonal antibody, clone KRT7/1499R (Cat # RAB03811).



Flow Cytometry

Flow-cytometry analysis of PFA-fixed HeLa cells using human anti-Cytokeratin 7 recombinant monoclonal antibody, clone KRT7/1499R (Cat # RAB03811).

Specification

Product Description	Rabbit recombinant monoclonal antibody raised against full-length human CK7 protein.
Antibody Species	Rabbit
Immunogen	Original antibody is raised against recombinant protein corresponding to full-length human CK7 protein
Reactivity	Human
Form	Liquid
Conjugation	Unconjugated
Purification	Protein A affinity chromatography
Concentration	0.2 mg/mL
Isotype	IgG
Recommend Usage	Flow cytometry (0.5-1 ug/10e6 cells) Immunofluorescence (0.5-1 ug/mL) Immunohistochemistry (Formalin/PFA-fixed paraffin-embedded sections)(0.5-1 ug/mL for 30 min at RT) SDS-PAGE analysis Western Blot The optimal working dilution should be determined by the end user.
Storage Buffer	In PBS, 0.1 mg/ml BSA, 0.05% sodium azide
Storage Instruction	Store at 2~8°C. Aliquot to avoid repeated freezing and thawing.
Note	Optimal dilutions for each application to be determined by the researcher

Applications

- Western Blot

Western blot analysis of human HeLa cell lysate using anti-Cytokeratin 7 recombinant monoclonal antibody, clone KRT7/1499R (Cat # RAB03811).

- Immunohistochemistry (Formalin/PFA-fixed paraffin-embedded sections)

Immunohistochemistry (Formalin-fixed paraffin-embedded sections) of human oviduct with anti-Cytokeratin 7 recombinant monoclonal antibody, clone KRT7/1499R (Cat # RAB03811).

- Immunofluorescence

- SDS-PAGE

SDS-PAGE analysis of purified, BSA-free recombinant Cytokeratin 7 monoclonal antibody, clone KRT7/1499R (Cat # RAB03811).

- Flow Cytometry

Flow-cytometry analysis of PFA-fixed HeLa cells using human anti-Cytokeratin 7 recombinant monoclonal antibody, clone KRT7/1499R (Cat # RAB03811).

Gene Info — KRT7

Entrez GeneID	3855
---------------	----------------------

Protein Accession#	P08729
--------------------	------------------------

Gene Name	KRT7
-----------	------

Gene Alias	CK7, K2C7, K7, MGC129731, MGC3625, SCL
------------	--

Gene Description	keratin 7
------------------	-----------

Omim ID	148059
---------	------------------------

Gene Ontology	Hyperlink
---------------	---------------------------

Gene Summary

The protein encoded by this gene is a member of the keratin gene family. The type II cytokeratins consist of basic or neutral proteins which are arranged in pairs of heterotypic keratin chains coexpressed during differentiation of simple and stratified epithelial tissues. This type II cytokeratin is specifically expressed in the simple epithelia lining the cavities of the internal organs and in the gland ducts and blood vessels. The genes encoding the type II cytokeratins are clustered in a region of chromosome 12q12-q13. Alternative splicing may result in several transcript variants; however, not all variants have been fully described. [provided by RefSeq]

Other Designations

cytokeratin 7|keratin, 55K type II cytoskeletal|keratin, simple epithelial type I, K7|keratin, type II cytoskeletal 7|sarcolectin|type II mesothelial keratin K7
