

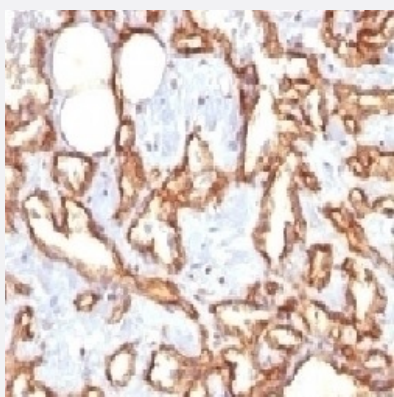
RecomAb™

PECAM1 recombinant monoclonal antibody, clone C31/1395R

Catalog # RAB03798

Size 100 ug

Applications



Immunohistochemistry (Formalin/PFA-fixed paraffin-embedded sections)

Immunohistochemistry (Formalin-fixed paraffin-embedded sections) of human angiocarcinoma with anti-CD31 recombinant monoclonal antibody, clone C31/1395R (Cat # RAB03798).

Specification

Product Description	Rabbit recombinant monoclonal antibody raised against human full length recombinant CD31 protein
Antibody Species	Rabbit
Immunogen	Original antibody is raised against recombinant protein corresponding to human full length recombinant CD31 protein
Reactivity	Human
Form	Liquid
Conjugation	Unconjugated
Purification	Protein A affinity chromatography
Concentration	0.2 mg/mL
Isotype	IgG

Recommend Usage	Flow cytometry (0.5-1 ug/10e6 cells in 0.1ml) Immunofluorescence (0.5-1 ug/mL) Immunohistochemistry (Formalin/PFA-fixed paraffin-embedded sections)(1-2 ug/mL for 30 min at RT) The optimal working dilution should be determined by the end user.
Storage Buffer	In PBS, 0.1 mg/ml BSA, 0.05% sodium azide
Storage Instruction	Store at 2~8°C. Aliquot to avoid repeated freezing and thawing.
Note	Optimal dilutions for each application to be determined by the researcher

Applications

- Immunohistochemistry (Formalin/PFA-fixed paraffin-embedded sections)

Immunohistochemistry (Formalin-fixed paraffin-embedded sections) of human angiocarcinoma with anti-CD31 recombinant monoclonal antibody, clone C31/1395R (Cat # RAB03798).

- Immunofluorescence
- Flow Cytometry

Gene Info — PECAM1

Entrez GeneID	5175
Protein Accession#	P16284
Gene Name	PECAM1
Gene Alias	CD31, PECAM-1
Gene Description	platelet/endothelial cell adhesion molecule
Omim ID	173445
Gene Ontology	Hyperlink
Gene Summary	CD31/EndoCAM adhesion molecule
Other Designations	CD31 antigen CD31/EndoCAM PECAM-1, CD31/EndoCAM adhesion molecule

Pathway

- [Cell adhesion molecules \(CAMs\)](#)
- [Leukocyte transendothelial migration](#)

Disease

- [Acute Disease](#)
- [Angina Pectoris](#)
- [Arteriosclerosis](#)
- [Asthma](#)
- [Astrocytoma](#)
- [Atherosclerosis](#)
- [Brain Ischemia](#)
- [Bronchiolitis](#)
- [Cadaver](#)
- [Cerebral Hemorrhage](#)
- [Chorioamnionitis](#)
- [Cicatrix](#)
- [Coronary Artery Disease](#)
- [Coronary Disease](#)
- [Coronary Stenosis](#)
- [Diabetes Mellitus](#)
- [Diabetic Retinopathy](#)
- [Disease Progression](#)
- [Disease Susceptibility](#)
- [Fetal Membranes](#)

- [Genetic Predisposition to Disease](#)
- [Graft vs Host Disease](#)
- [Hematologic Diseases](#)
- [Hematologic Neoplasms](#)
- [Hypercholesterolemia](#)
- [Hypertension](#)
- [Infant](#)
- [Infection](#)
- [Inflammation](#)
- [Intracranial Hemorrhages](#)
- [Kidney Failure](#)
- [Leukemia](#)
- [Malaria](#)
- [Metabolic Syndrome X](#)
- [Multiple Sclerosis](#)
- [Myocardial Infarction](#)
- [Obesity](#)
- [Obstetric Labor](#)
- [Osteosarcoma](#)
- [Pre-Eclampsia](#)
- [Premature Birth](#)
- [Recurrence](#)
- [Renal Insufficiency](#)
- [Respiratory Syncytial Virus Infections](#)
- [Stroke](#)
- [Subarachnoid Hemorrhage](#)

- [Syndrome](#)
- [Urinary Tract Infections](#)
- [Venous Thrombosis](#)
- [Werner syndrome](#)