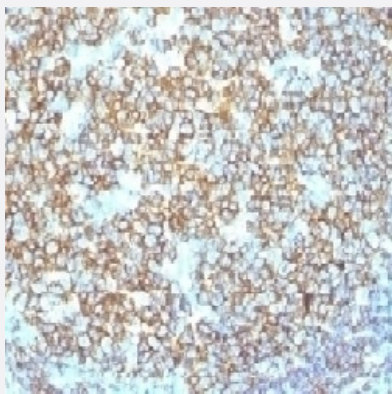


RecomAb™

MS4A1 recombinant monoclonal antibody, clone IGEL/1497R

Catalog # RAB03794 Size 100 ug

Applications



Immunohistochemistry (Formalin/PFA-fixed paraffin-embedded sections)

Immunohistochemistry (Formalin-fixed paraffin-embedded sections) of human tonsil with anti-CD20 recombinant monoclonal antibody, clone IGEL/1497R (Cat # RAB03794).

Specification

Product Description	Rabbit recombinant monoclonal antibody raised against full length human CD20 protein.
Antibody Species	Rabbit
Immunogen	Original antibody is raised against recombinant protein corresponding to full length human CD20 protein
Reactivity	Human
Form	Liquid
Conjugation	Unconjugated
Purification	Protein A affinity chromatography
Concentration	0.2 mg/mL
Isotype	IgG

Recommend Usage	Flow cytometry (0.5-1 ug/million cells) Immunofluorescence (0.5-1 ug/mL) Immunohistochemistry (Formalin/PFA-fixed paraffin-embedded sections)(0.5-1 ug/mL for 30 min at RT) The optimal working dilution should be determined by the end user.
------------------------	---

Storage Buffer	In PBS, 0.1 mg/ml BSA, 0.05% sodium azide
-----------------------	---

Storage Instruction	Store at 2~8°C. Aliquot to avoid repeated freezing and thawing.
----------------------------	--

Note	Optimal dilutions for each application to be determined by the researcher
-------------	---

Applications

- Immunohistochemistry (Formalin/PFA-fixed paraffin-embedded sections)

Immunohistochemistry (Formalin-fixed paraffin-embedded sections) of human tonsil with anti-CD20 recombinant monoclonal antibody, clone IGEL/1497R (Cat # RAB03794).

- Immunofluorescence

- Flow Cytometry

Gene Info — MS4A1

Entrez GeneID	931
----------------------	---------------------

Protein Accession#	P11836
---------------------------	------------------------

Gene Name	MS4A1
------------------	-------

Gene Alias	B1, Bp35, CD20, LEU-16, MGC3969, MS4A2, S7
-------------------	--

Gene Description	membrane-spanning 4-domains, subfamily A, member 1
-------------------------	--

Omim ID	112210
----------------	------------------------

Gene Ontology	Hyperlink
----------------------	---------------------------

Gene Summary

This gene encodes a member of the membrane-spanning 4A gene family. Members of this nascent protein family are characterized by common structural features and similar intron/exon splice boundaries and display unique expression patterns among hematopoietic cells and nonlymphoid tissues. This gene encodes a B-lymphocyte surface molecule which plays a role in the development and differentiation of B-cells into plasma cells. This family member is localized to 11q12, among a cluster of family members. Alternative splicing of this gene results in two transcript variants which encode the same protein. [provided by RefSeq]

Other Designations

B-lymphocyte cell-surface antigen B1|CD20 antigen|CD20 receptor

Pathway

- [Hematopoietic cell lineage](#)

Disease

- [Breast cancer](#)
- [Breast Neoplasms](#)
- [Genetic Predisposition to Disease](#)
- [Lymphoma](#)
- [Neoplasm Recurrence](#)
- [Ovarian cancer](#)