

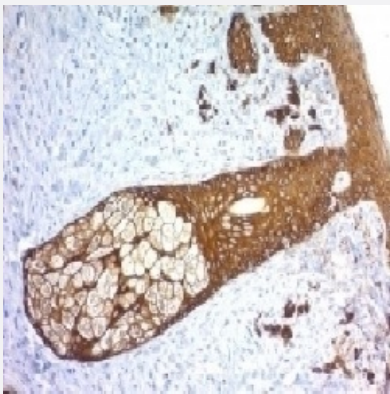
RecomAb™

# KRT76 recombinant monoclonal antibody, clone KRTH/1576R

Catalog # RAB03785

Size 100 ug

## Applications



### Immunohistochemistry (Formalin/PFA-fixed paraffin-embedded sections)

Immunohistochemistry (Formalin-fixed paraffin-embedded sections) of human skin with anti-basic cytokeratin recombinant monoclonal antibody, clone KRTH/1576R (Cat # RAB03785).

## Specification

Product Description	Rabbit recombinant monoclonal antibody raised against recombinant human KRT76 protein.
Antibody Species	Rabbit
Immunogen	Original antibody is raised against recombinant protein corresponding to recombinant human KRT76 protein
Reactivity	Human
Form	Liquid
Conjugation	Unconjugated
Purification	Protein A affinity chromatography
Concentration	0.2 mg/mL
Isotype	IgG

<b>Recommend Usage</b>	Flow cytometry (0.5-1 ug/million cells in 0.1mL) Immunofluorescence (1-2 ug/mL) Immunohistochemistry (Formalin/PFA-fixed paraffin-embedded sections) (0.25-0.5 ug/mL for 30 min at RT) Western Blot (0.5-1 ug/mL) The optimal working dilution should be determined by the end user.
<b>Storage Buffer</b>	In PBS, 0.1 mg/ml BSA, 0.05% sodium azide
<b>Storage Instruction</b>	Store at 2~8°C. Aliquot to avoid repeated freezing and thawing.
<b>Note</b>	Optimal dilutions for each application to be determined by the researcher

## Applications

- Western Blot
- Immunohistochemistry (Formalin/PFA-fixed paraffin-embedded sections)  
Immunohistochemistry (Formalin-fixed paraffin-embedded sections) of human skin with anti-basic cytokeratin recombinant monoclonal antibody, clone KRTH/1576R (Cat # RAB03785).
- Immunofluorescence
- Flow Cytometry

## Gene Info — KRT76

<b>Entrez GeneID</b>	<a href="#">51350</a>
<b>Protein Accession#</b>	<a href="#">Q01546</a>
<b>Gene Name</b>	KRT76
<b>Gene Alias</b>	HUMCYT2A, KRT2B, KRT2P
<b>Gene Description</b>	keratin 76
<b>Gene Ontology</b>	<a href="#">Hyperlink</a>
<b>Gene Summary</b>	Keratins are intermediate filament proteins responsible for the structural integrity of epithelial cells and are subdivided into epithelial keratins and hair keratins. The type II keratins are clustered in a region of chromosome 12q13. [provided by RefSeq]

**Other Designations**cytokeratin 2|keratin 2p

---