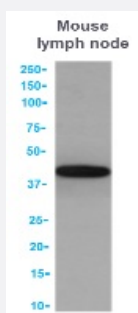


RecomAb™

# Pdcd1 recombinant monoclonal antibody, clone J43

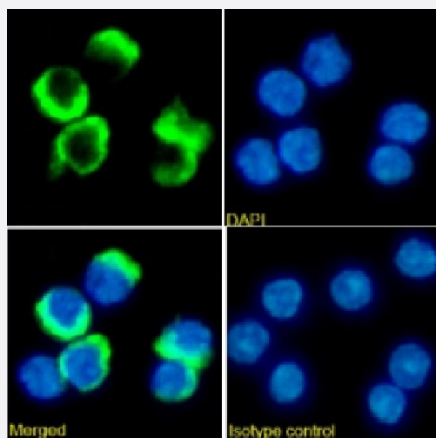
Catalog # RAB03737      Size 200 ug

## Applications



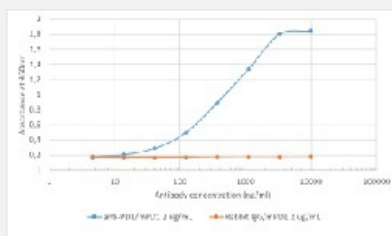
### Western Blot

Western blot analysis of Pdcd1 in mouse lymph node tissue lysates using mouse anti-PD-1 recombinant monoclonal antibody, clone J43 (Cat # RAB03737).



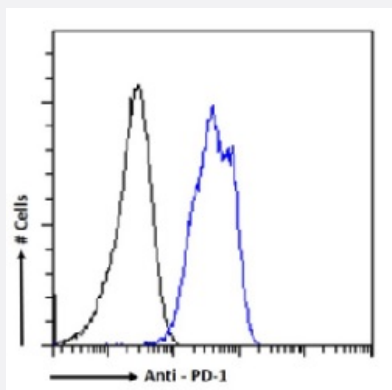
### Immunofluorescence

Immunofluorescence analysis of Pdcd1 (green) in mouse splenocytes lysates using mouse anti-PD-1 recombinant monoclonal antibody, clone J43 (Cat # RAB03737), and DAPI(blue).



### Enzyme-linked Immunoabsorbent Assay

ELISA analysis of recombinant mouse PD-1 Fc-Fusion Protein using anti-PD-1 recombinant monoclonal antibody, clone J43 (Cat # RAB03737).



## Flow Cytometry

Flow-cytometry analysis of Pdcd1 in mouse splenocytes lysates using mouse anti-PD-1 recombinant monoclonal antibody, clone J43 (Cat # RAB03737).

## Specification

<b>Product Description</b>	Rabbit recombinant monoclonal antibody raised against mouse PD-1 cDNA transfectant BHK cells.
<b>Antibody Species</b>	Rabbit
<b>Immunogen</b>	Original antibody is raised against recombinant protein corresponding to mouse PD-1 cDNA transfectant BHK cells
<b>Reactivity</b>	Mouse
<b>Form</b>	Liquid
<b>Conjugation</b>	Unconjugated
<b>Concentration</b>	batch dependent
<b>Isotype</b>	IgG lambda
<b>Recommend Usage</b>	Depletion ELISA Flow cytometry Immunofluorescence Immunohistochemistry Immunoprecipitation Neutralization Assay Western Blot The optimal working dilution should be determined by the end user.
<b>Storage Buffer</b>	Lyophilized from PBS with 0.02% Proclin 300
<b>Storage Instruction</b>	Store at 4°C for 3 months. For long term storage store at -20°C. Aliquot to avoid repeated freezing and thawing.
<b>Note</b>	For research use only.

## Applications

- Western Blot

Western blot analysis of Pdcd1 in mouse lymph node tissue lysates using mouse anti-PD-1 recombinant monoclonal antibody, clone J43 (Cat # RAB03737).

- Immunohistochemistry

- Immunofluorescence

Immunofluorescence analysis of Pdcd1 (green) in mouse splenocytes lysates using mouse anti-PD-1 recombinant monoclonal antibody, clone J43 (Cat # RAB03737), and DAPI(blue).

- Immunoprecipitation

- Enzyme-linked Immunoabsorbent Assay

ELISA analysis of recombinant mouse PD-1 Fc-Fusion Protein using anti-PD-1 recombinant monoclonal antibody, clone J43 (Cat # RAB03737).

- Flow Cytometry

Flow-cytometry analysis of Pdcd1 in mouse splenocytes lysates using mouse anti-PD-1 recombinant monoclonal antibody, clone J43 (Cat # RAB03737).

- Neutralization

- WBC Depletion

## Gene Info — Pdcd1

Entrez GeneID	<a href="#">18566</a>
Protein Accession#	<a href="#">Q02242</a>
Gene Name	Pdcd1
Gene Alias	Ly101, PD-1, Pdc1
Gene Description	programmed cell death 1
Gene Ontology	<a href="#">Hyperlink</a>
Other Designations	-