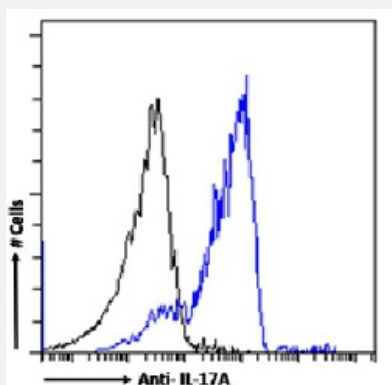


RecomAb™

# IL17a recombinant monoclonal antibody, clone MM17F3

Catalog # RAB03566      Size 200 ug

## Applications



### Flow Cytometry

Flow cytometric analysis of mouse splenocytes with IL17a recombinant monoclonal antibody, clone MM17F3 (Cat # RAB03566).

The mouse splenocytes were fixed using 2% PFA and permeabilized 0.5% Triton and stained with anti-Fluorescein IgG antibody (isotype control-black line) or the r version of RAB03566 (blue line) at a dilution of 1:100 for 1h at RT. After washing the bound antibody was detected using a goat anti-mouse IgG AlexaFluor® 488 antibody at a dilution of 1:1000 and cells analyzed using a FACSCanto flow-cytometer.

## Specification

<b>Product Description</b>	Rabbit recombinant monoclonal antibody raised against mouse IL17a.
<b>Antibody Species</b>	Rabbit
<b>Immunogen</b>	Original antibody is raised against IL-17A cross-linked to ovalbumin to generate a highly immunogenic complex.
<b>Reactivity</b>	Mouse
<b>Form</b>	Liquid
<b>Isotype</b>	IgG
<b>Recommend Usage</b>	Blocking ELISA Flow Cytometry The optimal working dilution should be determined by the end user.
<b>Storage Buffer</b>	In PBS (0.02% Proclin 300)

**Storage Instruction**

Store at 4°C for 3 months. For long term storage, aliquot and store at -20°C.  
Aliquot to avoid repeated freezing and thawing.

## Applications

- Enzyme-linked Immunoabsorbent Assay
- Blocking
- Flow Cytometry

Flow cytometric analysis of mouse splenocytes with Il17a recombinant monoclonal antibody, clone MM17F3 (Cat # RAB03566). The mouse splenocytes were fixed using 2% PFA and permeabilized 0.5% Triton and stained with anti-Fluorescein IgG antibody (isotype control-black line) or the r version of RAB03566 (blue line) at a dilution of 1:100 for 1h at RT. After washing the bound antibody was detected using a goat anti-mouse IgG AlexaFluor® 488 antibody at a dilution of 1:1000 and cells analyzed using a FACSCanto flow-cytometer.

## Gene Info — Il17a

Entrez GeneID	<a href="#">16171</a>
Gene Name	Il17a
Gene Alias	Ctla-8, Ctla8, Il17
Gene Description	interleukin 17A
Gene Ontology	<a href="#">Hyperlink</a>
Other Designations	interleukin 17