

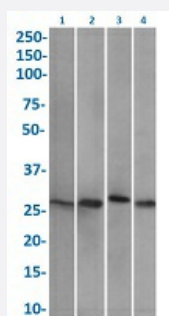
RecomAb™

HSPB1 recombinant monoclonal antibody, clone SAIC-23C-35

Catalog # RAB03542

Size 200 ug

Applications



Western Blot

Western blot analysis of lane 1: HeLa (0.03 ug/mL), Lane 2: MCF-7 (0.001 ug/mL), Lane 3: Caco-2 (0.1 ug/mL) and Lane 4: A431 (0.03 ug/mL) with HSPB1 recombinant monoclonal antibody, clone SAIC-23C-35 (Cat # RAB03542).

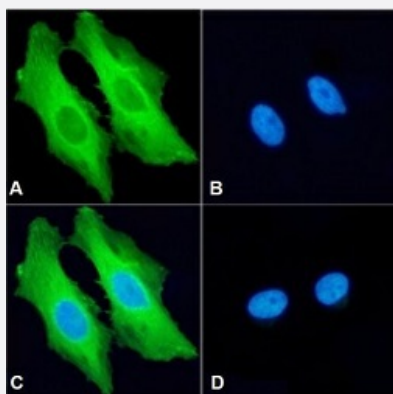
Western Blot analysis the tissue lysates (35ug protein in RIPA buffer) were resolved on a SDS PAGE gel and blots probed with the chimeric r version of RAB03542 before detection using an anti-rondary antibody. A primary incubation of 1h was used and protein was detected by chemiluminescence.

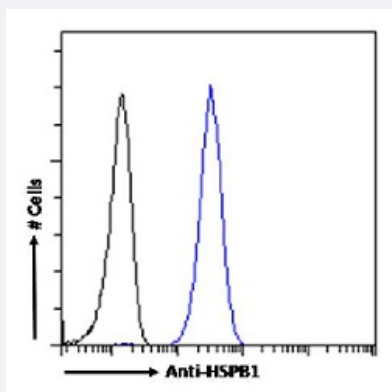
Immunofluorescence

Immunofluorescent staining of HeLa cells with HSPB1 recombinant monoclonal antibody, clone SAIC-23C-35 (Cat # RAB03542).

Immunofluorescence analysis of paraformaldehyde fixed HeLa cells permeabilized with 0.15% Triton and stained with the chimeric r version of RAB03542 at a dilution of 1:100 for 1h followed by Alexa Fluor® 488 secondary antibody at a dilution of 1:1000, showing cytoplasmic staining. The nuclear stain is DAPI (blue). The isotype control was an unknown specificity antibody followed by Alexa Fluor® 488 secondary antibody.

- (A) RAB03542
- (B) DAPI
- (C) Merged channels
- (D) Isotype control





Flow Cytometry

Flow cytometric analysis of Hela cells with HSPB1 recombinant monoclonal antibody, clone SAIC-23C-35 (Cat # RAB03542).

Paraformaldehyde fixed Hela cells permeabilized with 0.5% Triton were stained with anti-unknown specificity antibody (isotype control-black line) or the r version of RAB03542 (blue line) at a dilution of 1:100 for 1h at RT. After washing the bound antibody was detected using a goat anti-r AlexaFluor® 488 antibody at a dilution of 1:1000 and cells analyzed using a FACSCanto flow-cytometer.

Specification

Product Description	Rabbit recombinant monoclonal antibody raised against human HSPB1.
Antibody Species	Rabbit
Immunogen	Original antibody is raised against peptide "VSLDVNHFAPDELTVK" derived from Heat shock protein beta-1.
Reactivity	Human
Form	Liquid
Isotype	IgG
Recommend Usage	Flow Cytometry Immunofluorescence Immuno-MRM (multiple reaction monitoring) Western Blot The optimal working dilution should be determined by the end user.
Storage Buffer	In PBS with 0.02% Proclin 300
Storage Instruction	Store at 4°C for up to 3 months. For longer storage, aliquot and store at -20°C. Aliquot to avoid repeated freezing and thawing.

Applications

● Western Blot

Western blot analysis of lane 1: Hela (0.03 ug/mL), Lane 2: MCF-7 (0.001 ug/mL), Lane 3: Caco-2 (0.1 ug/mL) and Lane 4: A431 (0.03 ug/mL) with HSPB1 recombinant monoclonal antibody, clone SAIC-23C-35 (Cat # RAB03542).

Western Blot analysis the tissue lysates (35ug protein in RIPA buffer) were resolved on a SDS PAGE gel and blots probed with the chimeric r version of RAB03542 before detection using an anti-rondary antibody. A primary incubation of 1h was used and protein was detected by chemiluminescence.

● Immunofluorescence

Immunofluorescent staining of Hela cells with HSPB1 recombinant monoclonal antibody, clone SAIC-23C-35 (Cat # RAB03542).

Immunofluorescence analysis of paraformaldehyde fixed Hela cells permeabilized with 0.15% Triton and stained with the chimeric r version of RAB03542 at a dilution of 1:100 for 1h followed by Alexa Fluor® 488 secondary antibody at a dilution of 1:1000, showing cytoplasmic staining. The nuclear stain is DAPI (blue). The isotype control was an unknown specificity antibody followed by Alexa Fluor® 488 secondary antibody.

(A) RAB03542

(B) DAPI

(C) Merged channels

(D) Isotype control

● Flow Cytometry

Flow cytometric analysis of Hela cells with HSPB1 recombinant monoclonal antibody, clone SAIC-23C-35 (Cat # RAB03542).

Paraformaldehyde fixed Hela cells permeabilized with 0.5% Triton were stained with anti-unknown specificity antibody (isotype control-black line) or the r version of RAB03542 (blue line) at a dilution of 1:100 for 1h at RT. After washing the bound antibody was detected using a goat anti-r AlexaFluor® 488 antibody at a dilution of 1:1000 and cells analyzed using a FACSCanto flow-cytometer.

● Immuno-MRM (multiple reaction monitoring)

Gene Info — HSPB1

Entrez GeneID [3315](#)

Gene Name HSPB1

Gene Alias CMT2F, DKFZp586P1322, HMN2B, HS.76067, HSP27, HSP28, Hsp25, SRP27

Gene Description heat shock 27kDa protein 1

Omim ID [602195](#) [606595](#) [608634](#)

Gene Ontology [Hyperlink](#)

Gene Summary

The protein encoded by this gene is induced by environmental stress and developmental changes. The encoded protein is involved in stress resistance and actin organization and translocates from the cytoplasm to the nucleus upon stress induction. Defects in this gene are a cause of Charcot-Marie-Tooth disease type 2F (CMT2F) and distal hereditary motor neuropathy (dHMN). [provided by RefSeq]

Other Designations

OTTHUMP00000024846|estrogen-regulated 24 kDa protein|heat shock 27kD protein 1|heat shock protein beta-1|stress-responsive protein 27

Pathway

- [MAPK signaling pathway](#)
- [VEGF signaling pathway](#)

Disease

- [Adenocarcinoma](#)
- [Carcinoma](#)
- [Charcot-Marie-Tooth Disease](#)
- [Diabetic Nephropathies](#)
- [Genetic Predisposition to Disease](#)
- [Lung Neoplasms](#)
- [Small Cell Lung Carcinoma](#)