

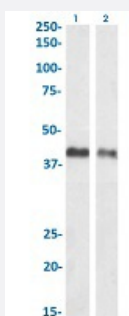
RecomAb™

# EPCAM recombinant monoclonal antibody, clone HEA125

Catalog # RAB03429

Size 200 ug

## Applications



### Western Blot

Western blot analysis of Lane 1: human breast carcinoma and Lane 2: human colorectal carcinoma tissue lysate with EPCAM recombinant monoclonal antibody, clone HEA125 (Cat # RAB03429).

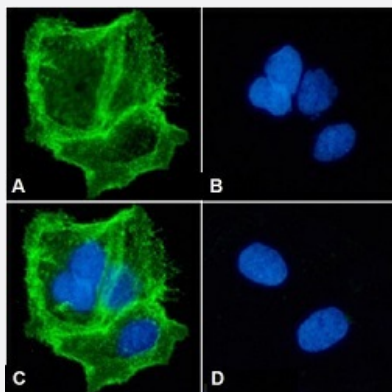
Western Blot analysis the tissue lysate (35 ug protein in RIPA buffer) was resolved on an SDS PAGE gel and blots probed with the chimeric mouse IgG version of RAB03429 at 1 ug/mL before detection using an anti-mouse secondary antibody. A primary incubation of 1h was used and protein was detected by chemiluminescence.

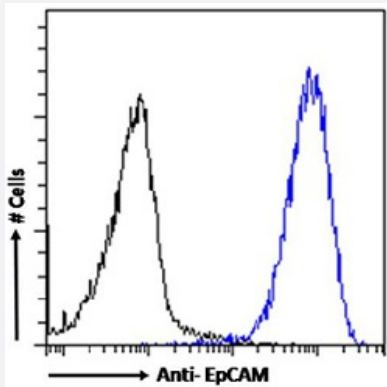
### Immunofluorescence

Immunofluorescent staining of Caco-2 cells with EPCAM recombinant monoclonal antibody, clone HEA125 (Cat # RAB03429).

Immunofluorescence analysis of paraformaldehyde fixed Caco-2 cells stained with the chimeric mouse IgG version of RAB03429 at 10 ug/mL followed by Alexa Fluor® 488 secondary antibody (2 ug/mL), showing membrane staining. The nuclear stain is DAPI (blue). The isotype control was stained with anti-unknown antibody followed by staining with Alexa Fluor® 488 secondary antibody.

- (A) RAB03429
- (B) DAPI
- (C) Merged channels
- (D) Isotype control





## Flow Cytometry

Flow cytometric analysis of Caco-2 cells with EPCAM recombinant monoclonal antibody, clone HEA125 (Cat # RAB03429).

Caco-2 cells were stained with anti-unknown IgG antibody (isotype control- black line) or the mouse IgG chimeric version of RAB03429 (blue line) at a dilution of 1:100 for 1h at RT. After washing the bound antibody was detected using a goat anti-mouse IgG AlexaFluor® 488 antibody at a dilution of 1:1000 and cells analyzed using a FACSCanto flow-cytometer.

## Specification

<b>Product Description</b>	Mouse recombinant monoclonal antibody raised against human EPCAM.
<b>Antibody Species</b>	Mouse
<b>Immunogen</b>	Original antibody is raised against the human colon carcinoma cell line HT-29.
<b>Reactivity</b>	Human
<b>Form</b>	Liquid
<b>Isotype</b>	IgG1 kappa
<b>Recommend Usage</b>	Flow Cytometry Immunofluorescence Immunohistochemistry Immunoprecipitation Radioimmunoassay Western Blot The optimal working dilution should be determined by the end user.
<b>Storage Buffer</b>	In PBS with 0.02% Proclin 300
<b>Storage Instruction</b>	Store at 4°C for up to 3 months. For longer storage, aliquot and store at -20°C. Aliquot to avoid repeated freezing and thawing.

## Applications

- Western Blot

Western blot analysis of Lane 1: human breast carcinoma and Lane 2: human colorectal carcinoma tissue lysate with EPCAM recombinant monoclonal antibody, clone HEA125 (Cat # RAB03429).

Western Blot analysis the tissue lysate (35 ug protein in RIPA buffer) was resolved on an SDS PAGE gel and blots probed with the chimeric mouse IgG version of RAB03429 at 1 ug/mL before detection using an anti-mouse secondary antibody. A primary incubation of 1h was used and protein was detected by chemiluminescence.

- Immunohistochemistry

- Immunofluorescence

Immunofluorescent staining of Caco-2 cells with EPCAM recombinant monoclonal antibody, clone HEA125 (Cat # RAB03429). Immunofluorescence analysis of paraformaldehyde fixed Caco-2 cells stained with the chimeric mouse IgG version of RAB03429 at 10 ug/mL followed by Alexa Fluor® 488 secondary antibody (2 ug/mL), showing membrane staining. The nuclear stain is DAPI (blue). The isotype control was stained with anti-unknown antibody followed by staining with Alexa Fluor® 488 secondary antibody.

(A) RAB03429

(B) DAPI

(C) Merged channels

(D) Isotype control

- Immunoprecipitation

- Radioimmunoassay

- Flow Cytometry

Flow cytometric analysis of Caco-2 cells with EPCAM recombinant monoclonal antibody, clone HEA125 (Cat # RAB03429). Caco-2 cells were stained with anti-unknown IgG antibody (isotype control-black line) or the mouse IgG chimeric version of RAB03429 (blue line) at a dilution of 1:100 for 1h at RT. After washing the bound antibody was detected using a goat anti-mouse IgG AlexaFluor® 488 antibody at a dilution of 1:1000 and cells analyzed using a FACSCanto flow-cytometer.

## Gene Info — EPCAM

Entrez GeneID	<a href="#">4072</a>
Gene Name	EPCAM
Gene Alias	17-1A, 323/A3, CD326, CO-17A, CO17-1A, EGP, EGP-2, EGP34, EGP40, ESA, Ep-CAM, GA7 33-2, HEA125, KS1/4, KSA, M4S1, MH99, MIC18, MK-1, MOC31, TACST-1, TACSTD1, TROP 1, hEGP-2
Gene Description	epithelial cell adhesion molecule
Omim ID	<a href="#">185535</a>
Gene Ontology	<a href="#">Hyperlink</a>

**Gene Summary**

This gene encodes a carcinoma-associated antigen and is a member of a family that includes at least two type I membrane proteins. This antigen is expressed on most normal epithelial cells and gastrointestinal carcinomas and functions as a homotypic calcium-independent cell adhesion molecule. The antigen is being used as a target for immunotherapy treatment of human carcinomas. Mutations in this gene result in congenital tufting enteropathy. [provided by RefSeq]

**Other Designations**

adenocarcinoma-associated antigen|carcinoma-associated antigen GA733-2|human epithelial glycoprotein-2|membrane component, chromosome 4, surface marker (35kD glycoprotein)|tumor-associated calcium signal transducer 1

**Disease**

- [Genetic Predisposition to Disease](#)
- [Ovarian Neoplasms](#)