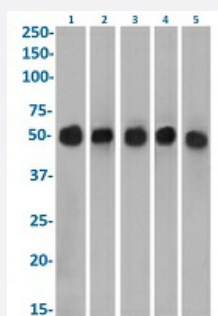


RecomAb™

KRT7 recombinant monoclonal antibody, clone OV-TL 12/30

Catalog # RAB03400 Size 200 ug

Applications



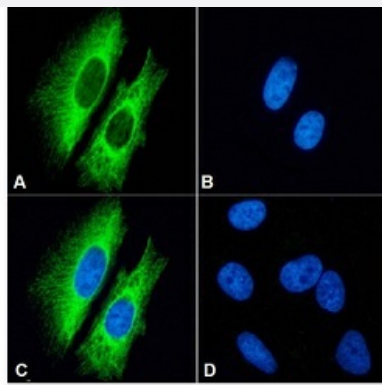
Western Blot

Western blot analysis of Lane 1: HeLa (0.00001 ug/mL), Lane 2: HepG2 (0.0003 ug/mL), Lane 3: A549 (0.00001 ug/mL), Lane 4: human thyroid (0.0003 ug/mL) and Lane 5: human placenta (0.00001 ug/mL) with KRT7 recombinant monoclonal antibody, clone OV-TL 12/30 (Cat # RAB03400). A primary incubation of 1h was used and protein was detected by chemiluminescence.

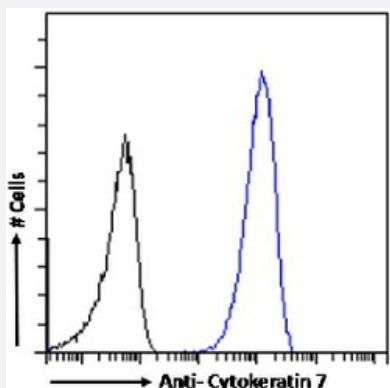
Immunofluorescence

Immunofluorescent staining of HeLa cells with KRT7 recombinant monoclonal antibody, clone OV-TL 12/30 (Cat # RAB03400).

Immunofluorescence analysis of paraformaldehyde fixed HeLa cells on Shi-fix™ coverslips stained with the chimeric r version of RAB03400 at 10 ug/mL followed by Alexa Fluor® 488 secondary antibody (2 ug/mL), showing membrane staining. The nuclear stain is DAPI (blue). The isotype control was stained with unknown specificity antibody followed by staining with Alexa Fluor® 488 secondary antibody.



- (A) RAB03400
- (B) DAPI
- (C) Merged channels
- (D) Isotype control



Flow Cytometry

Flow cytometric analysis of Hela cells with KRT7 recombinant monoclonal antibody, clone OV-TL 12/30 (Cat # RAB03400).

Paraformaldehyde Hela cells were fixed using 2% PFA and stained with anti-unknown specificity antibody (isotype control-black line) or the r1 version of RAB03400 (blue line) at a dilution of 1:100 for 1h at RT. After washing the bound antibody was detected using a goat anti-r AlexaFluor® 488 antibody at a dilution of 1:1000 and cells analyzed using a FACSCanto flow-cytometer.

Specification

Product Description Rabbit recombinant monoclonal antibody raised against human KRT7.

Antibody Species Rabbit

Immunogen Original antibody is raised against ovarian carcinoma cell line OTN11.

Reactivity Human

Form Liquid

Isotype IgG kappa

Recommend Usage
Flow Cytometry
Immunofluorescence
Immunohistochemistry
Western Blot
The optimal working dilution should be determined by the end user.

Storage Buffer In PBS with 0.02% Proclin 300

Storage Instruction Store at 4°C for up to 3 months. For longer storage, aliquot and store at -20°C. Aliquot to avoid repeated freezing and thawing.

Applications

Western Blot

Western blot analysis of Lane 1: Hela (0.00001 ug/mL), Lane 2: HepG2 (0.0003 ug/mL), Lane 3: A549 (0.00001 ug/mL), Lane 4: human thyroid (0.0003 ug/mL) and Lane 5: human placenta (0.00001 ug/mL) with KRT7 recombinant monoclonal antibody, clone OV-TL 12/30 (Cat # RAB03400). A primary incubation of 1h was used and protein was detected by chemiluminescence.

- Immunohistochemistry
- Immunofluorescence

Immunofluorescent staining of HeLa cells with KRT7 recombinant monoclonal antibody, clone OV-TL 12/30 (Cat # RAB03400). Immunofluorescence analysis of paraformaldehyde fixed HeLa cells on Shi-fix™ coverslips stained with the chimeric r version of RAB03400 at 10 ug/mL followed by Alexa Fluor® 488 secondary antibody (2 ug/mL), showing membrane staining. The nuclear stain is DAPI (blue). The isotype control was stained with unknown specificity antibody followed by staining with Alexa Fluor® 488 secondary antibody.

- (A) RAB03400
- (B) DAPI
- (C) Merged channels
- (D) Isotype control

- Flow Cytometry

Flow cytometric analysis of HeLa cells with KRT7 recombinant monoclonal antibody, clone OV-TL 12/30 (Cat # RAB03400). Paraformaldehyde HeLa cells were fixed using 2% PFA and stained with anti-unknown specificity antibody (isotype control-black line) or the r1 version of RAB03400 (blue line) at a dilution of 1:100 for 1h at RT. After washing the bound antibody was detected using a goat anti-r AlexaFluor® 488 antibody at a dilution of 1:1000 and cells analyzed using a FACSCanto flow-cytometer.

Gene Info — KRT7

Entrez GeneID [3855](#)

Gene Name KRT7

Gene Alias CK7, K2C7, K7, MGC129731, MGC3625, SCL

Gene Description keratin 7

Omim ID [148059](#)

Gene Ontology [Hyperlink](#)

Gene Summary The protein encoded by this gene is a member of the keratin gene family. The type II cytokeratins consist of basic or neutral proteins which are arranged in pairs of heterotypic keratin chains coexpressed during differentiation of simple and stratified epithelial tissues. This type II cytokeratin is specifically expressed in the simple epithelia lining the cavities of the internal organs and in the gland ducts and blood vessels. The genes encoding the type II cytokeratins are clustered in a region of chromosome 12q12-q13. Alternative splicing may result in several transcript variants; however, not all variants have been fully described. [provided by RefSeq]

Other Designations cytokeratin 7|keratin, 55K type II cytoskeletal|keratin, simple epithelial type I, K7|keratin, type II cytoskeletal 7|sarcolectin|type II mesothelial keratin K7