

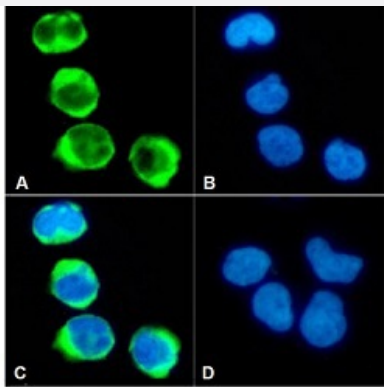
RecomAb™

CD8A recombinant monoclonal antibody, clone RIV11

Catalog # RAB03355 Size 200 ug

Applications

Immunofluorescence



Immunofluorescent staining of Jurkat cells with CD8A recombinant monoclonal antibody, clone RIV11 (Cat # RAB03355).

Immunofluorescence analysis of paraformaldehyde Jurkat cells fixed on Shi-fix™ coverslips stained with the chimeric r version of RAB03355 at 10 ug/mL for 1h followed by Alexa Fluor® 488 secondary antibody (2 ug/mL), showing membrane staining. The nuclear stain is DAPI (blue). The isotype control was stained with an unknown specificity antibody followed by staining with Alexa Fluor® 488 secondary antibody.

- (A) RAB03355
- (B) DAPI
- (C) Merged channels
- (D) Isotype control

Specification

Product Description	Rabbit recombinant monoclonal antibody raised against human CD8A.
Antibody Species	Rabbit
Immunogen	Original antibody is raised against human peripheral lymphocytes.
Reactivity	Human
Form	Liquid
Conjugation	Unconjugated
Concentration	batch dependent
Isotype	IgG, kappa

Recommend Usage

Flow Cytometry
Immunofluorescence
Immunohistochemistry
The optimal working dilution should be determined by the end user.

Storage Buffer

In PBS with 0.02% Proclin 300

Storage Instruction

Store at 4°C for up to 3 months. For longer storage, aliquot and store at -20°C.
Aliquot to avoid repeated freezing and thawing.

Applications

- Immunofluorescence

Immunofluorescent staining of Jurkat cells with CD8A recombinant monoclonal antibody, clone RV11 (Cat # RAB03355). Immunofluorescence analysis of paraformaldehyde Jurkat cells fixed on Shi-fix™ coverslips stained with the chimeric r version of RAB03355 at 10 ug/mL for 1h followed by Alexa Fluor® 488 secondary antibody (2 ug/mL), showing membrane staining. The nuclear stain is DAPI (blue). The isotype control was stained with an unknown specificity antibody followed by staining with Alexa Fluor® 488 secondary antibody.

- (A) RAB03355
- (B) DAPI
- (C) Merged channels
- (D) Isotype control

- Flow Cytometry

Gene Info — CD8A

Entrez GeneID[925](#)**Gene Name**

CD8A

Gene Alias

CD8, Leu2, MAL, p32

Gene Description

CD8a molecule

Omim ID[186910 608957](#)**Gene Ontology**[Hyperlink](#)

Gene Summary

The CD8 antigen is a cell surface glycoprotein found on most cytotoxic T lymphocytes that mediates efficient cell-cell interactions within the immune system. The CD8 antigen acts as a coreceptor with the T-cell receptor on the T lymphocyte to recognize antigens displayed by an antigen presenting cell (APC) in the context of class I MHC molecules. The coreceptor functions as either a homodimer composed of two alpha chains, or as a heterodimer composed of one alpha and one beta chain. Both alpha and beta chains share significant homology to immunoglobulin variable light chains. This gene encodes the CD8 alpha chain isoforms. Multiple transcript variants encoding different isoforms have been found for this gene. [provided by RefSeq]

Other Designations

CD8 antigen alpha polypeptide|CD8 antigen, alpha polypeptide (p32)|Leu2 T-lymphocyte antigen|OKT8 T-cell antigen|T cell co-receptor|T-cell antigen Leu2|T-cell surface glycoprotein CD8 alpha chain|T-lymphocyte differentiation antigen T8/Leu-2|T8 T-cell ant

Pathway

- [Antigen processing and presentation](#)
- [Cell adhesion molecules \(CAMs\)](#)
- [Hematopoietic cell lineage](#)
- [Primary immunodeficiency](#)
- [T cell receptor signaling pathway](#)