

RecomAb™

# CD7 recombinant monoclonal antibody, clone 3A1E

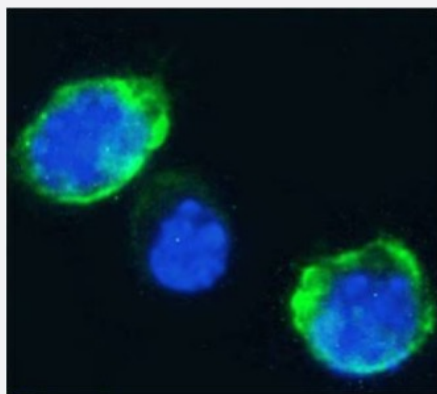
Catalog # RAB03338      Size 200 ug

## Applications



### Western Blot

Western blot analysis of Jurkat cell lysate with CD7 recombinant monoclonal antibody, clone 3A1E (Cat # RAB03338).



### Immunofluorescence

Immunofluorescent staining of Jurkat cells with CD7 recombinant monoclonal antibody, clone 3A1E (Cat # RAB03338).

Immunofluorescence analysis of paraformaldehyde fixed Jurkat cells on Shi-fix™ coverslips- permeabilized with 0.15% Triton and stained with the chimeric version of 3A1E (24-272) at 10 ug/ml for 1h followed by Alexa Fluor® 488 secondary antibody (1 ug/ml)- showing membrane staining. The nuclear stain is DAPI (blue). The isotype control was stained with an anti-Fluorescein antibody (0) followed by Alexa Fluor® 488 secondary antibody.

## Specification

Product Description	Rabbit recombinant monoclonal antibody raised against human CD7.
Antibody Species	Rabbit
Reactivity	Human
Form	Liquid
Isotype	IgG kappa

Recommend Usage	Flow Cytometry
	Functional Study
	Immunofluorescence
	Western Blot
	The optimal working dilution should be determined by the end user.

Storage Buffer	In PBS (0.02% Proclin 300)
----------------	----------------------------

Storage Instruction	Store at 4°C for 3 months. For long term storage store at -20°C. Aliquot to avoid repeated freezing and thawing.
---------------------	---

## Applications

- Western Blot

Western blot analysis of Jurkat cell lysate with CD7 recombinant monoclonal antibody, clone 3A1E (Cat # RAB03338).

- Immunofluorescence

Immunofluorescent staining of Jurkat cells with CD7 recombinant monoclonal antibody, clone 3A1E (Cat # RAB03338). Immunofluorescence analysis of paraformaldehyde fixed Jurkat cells on Shi-fix™ coverslips- permeabilized with 0.15% Triton and stained with the chimeric r version of 3A1E (24-272) at 10 ug/ml for 1h followed by Alexa Fluor® 488 secondary antibody (1 ug/ml)- showing membrane staining. The nuclear stain is DAPI (blue). The isotype control was stained with an anti-Fluorescein antibody (0) followed by Alexa Fluor® 488 secondary antibody.

- Functional Study

- Flow Cytometry

## Gene Info — CD7

Entrez GeneID	<a href="#">924</a>
---------------	---------------------

Gene Name	CD7
-----------	-----

Gene Alias	GP40, LEU-9, TP41, Tp40
------------	-------------------------

Gene Description	CD7 molecule
------------------	--------------

Omim ID	<a href="#">186820</a>
---------	------------------------

Gene Ontology	<a href="#">Hyperlink</a>
---------------	---------------------------

Gene Summary	This gene encodes a transmembrane protein which is a member of the immunoglobulin superfamily. This protein is found on thymocytes and mature T cells. It plays an essential role in T-cell interactions and also in T-cell/B-cell interaction during early lymphoid development. [provided by RefSeq]
--------------	--

**Other Designations**

CD7 antigen|CD7 antigen (p41)|T-cell antigen CD7|T-cell leukemia antigen|p41 protein

**Pathway**

- [Hematopoietic cell lineage](#)