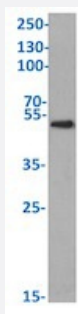


RecomAb™

CD63 recombinant monoclonal antibody, clone NK-1-C3

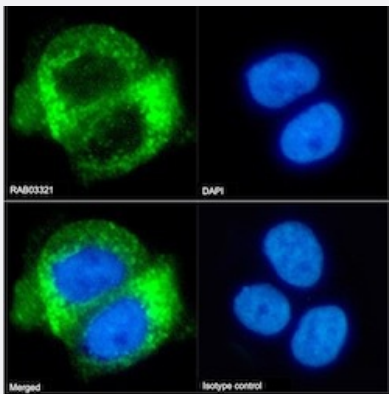
Catalog # RAB03321 Size 200 ug

Applications



Western Blot

Western blot analysis of K562 cell lysate with CD63 recombinant monoclonal antibody, clone NK-1-C3 (Cat # RAB03321).



Immunofluorescence

Immunofluorescent staining of A431 cells with CD63 recombinant monoclonal antibody, clone NK-1-C3 (Cat # RAB03321).

Immunofluorescence analysis of paraformaldehyde fixed A431 cells on Shi-fix™ coverslips stained with the chimeric r version of RAB03321 at 10 ug/ml for 1h followed by Alexa Fluor® 488 secondary antibody (2 ug/ml)- showing membrane staining. The nuclear stain is DAPI (blue). Panels show from left-right- top-bottom RAB03321- DAPI- merged channels and an isotype control. The isotype control was an unknown specificity antibody (3.0) followed by staining with Alexa Fluor® 488 secondary antibody.

Specification

Product Description	Rabbit recombinant monoclonal antibody raised against human CD63.
Antibody Species	Rabbit
Immunogen	Original antibody is raised against a plasma membrane preparation of the human melanoma MeWo cells.
Reactivity	Human, Mouse

Form	Liquid
Isotype	IgG kappa
Recommend Usage	Flow Cytometry Immunofluorescence Immunohistochemistry Immunoprecipitation Western Blot The optimal working dilution should be determined by the end user.
Storage Buffer	In PBS (0.02% Proclin 300)
Storage Instruction	Store at 4°C for 3 months. For long term storage store at -20°C. Aliquot to avoid repeated freezing and thawing.

Applications

- Western Blot

Western blot analysis of K562 cell lysate with CD63 recombinant monoclonal antibody, clone NK-1-C3 (Cat # RAB03321).

- Immunohistochemistry

- Immunofluorescence

Immunofluorescent staining of A431 cells with CD63 recombinant monoclonal antibody, clone NK-1-C3 (Cat # RAB03321). Immunofluorescence analysis of paraformaldehyde fixed A431 cells on Shi-fix™ coverslips stained with the chimeric r version of RAB03321 at 10 ug/ml for 1h followed by Alexa Fluor® 488 secondary antibody (2 ug/ml)- showing membrane staining. The nuclear stain is DAPI (blue). Panels show from left-right- top-bottom RAB03321- DAPI- merged channels and an isotype control. The isotype control was an unknown specificity antibody (3.0) followed by staining with Alexa Fluor® 488 secondary antibody.

- Immunoprecipitation

- Flow Cytometry

Gene Info — CD63

Entrez GeneID	967
Gene Name	CD63
Gene Alias	LAMP-3, ME491, MLA1, OMA81H, TSPAN30
Gene Description	CD63 molecule

Omim ID [155740](#)

Gene Ontology [Hyperlink](#)

Gene Summary

The protein encoded by this gene is a member of the transmembrane 4 superfamily, also known as the tetraspanin family. Most of these members are cell-surface proteins that are characterized by the presence of four hydrophobic domains. The proteins mediate signal transduction events that play a role in the regulation of cell development, activation, growth and motility. This encoded protein is a cell surface glycoprotein that is known to complex with integrins. It may function as a blood platelet activation marker. Deficiency of this protein is associated with Hermansky-Pudlak syndrome. Also this gene has been associated with tumor progression. The use of alternate polyadenylation sites has been found for this gene. Alternative splicing results in multiple transcript variants encoding different proteins. [provided by RefSeq]

Other Designations

CD63 antigen|CD63 antigen (melanoma 1 antigen)|granulophysin|lysosome-associated membrane glycoprotein 3|melanoma 1 antigen|melanoma-associated antigen ME491|melanoma-associated antigen MLA1|ocular melanoma-associated antigen|tetraspanin-30

Pathway

- [Lysosome](#)