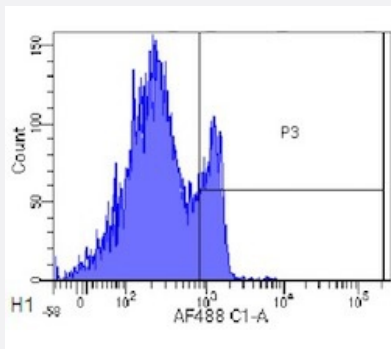


RecomAb™

# CD4 recombinant monoclonal antibody, clone MT310

Catalog # RAB03296      Size 200 ug

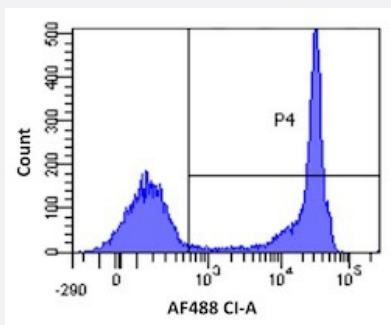
## Applications



### Flow Cytometry

Flow cytometric analysis of rhesus monkey lymphocytes with CD4 recombinant monoclonal antibody, clone MT310 (Cat # RAB03296).

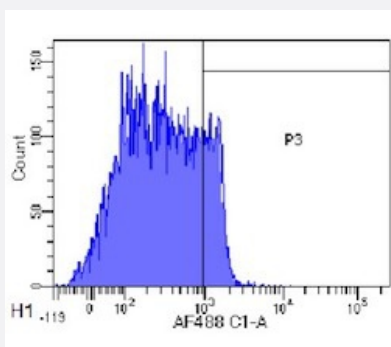
Rhesus monkey lymphocytes were stained with an isotype control (3.0- panel A) or the rmeric version of RAB03296 (panel B) at a concentration of 1 ug/ml for 30 mins at RT. After washing- bound antibody was detected using a AF488 conjugated donkey anti-ribody ( and cells analysed on a FACSCanto flow-cytometer.



### Flow Cytometry

Flow cytometric analysis of human lymphocytes with CD4 recombinant monoclonal antibody, clone MT310 (Cat # RAB03296).

Human lymphocytes were stained with an isotype control (3.0- panel A) or the rmeric version of RAB03296 (panel B) at a concentration of 1 ug/ml for 30 mins at RT. After washing- bound antibody was detected using a AF488 conjugated donkey anti-ribody ( and cells analysed on a FACSCanto flow-cytometer.



### Flow Cytometry

Flow cytometric analysis of cynomolgus monkey lymphocytes with CD4 recombinant monoclonal antibody, clone MT310 (Cat # RAB03296).

Cynomolgus monkey lymphocytes were stained with an isotype control (3.0- panel A) or the rmeric version of RAB03296 (panel B) at a concentration of 1 ug/ml for 30 mins at RT. After washing- bound antibody was detected using a AF488 conjugated donkey anti-ribody ( and cells analysed on a FACSCanto flow-cytometer.

## Specification

<b>Product Description</b>	Rabbit recombinant monoclonal antibody raised against human CD4.
<b>Antibody Species</b>	Rabbit
<b>Reactivity</b>	Crab-eating macaque, Human, Macaque
<b>Form</b>	Liquid
<b>Isotype</b>	IgG kappa
<b>Recommend Usage</b>	Flow Cytometry Immunofluorescence Immunohistochemistry (Formalin/PFA-fixed paraffin-embedded sections) Immunoprecipitation Western Blot The optimal working dilution should be determined by the end user.
<b>Storage Buffer</b>	In PBS (0.02% Proclin 300)
<b>Storage Instruction</b>	Store at 4°C for 3 months. For long term storage store at -20°C. Aliquot to avoid repeated freezing and thawing.

## Applications

- Western Blot
- Immunohistochemistry (Formalin/PFA-fixed paraffin-embedded sections)
- Immunofluorescence
- Immunoprecipitation
- Flow Cytometry

Flow cytometric analysis of rhesus monkey lymphocytes with CD4 recombinant monoclonal antibody, clone MT310 (Cat # RAB03296).

Rhesus monkey lymphocytes were stained with an isotype control (3.0- panel A) or the rmeric version of RAB03296 (panel B) at a concentration of 1 ug/ml for 30 mins at RT. After washing- bound antibody was detected using a AF488 conjugated donkey anti-ribody ( and cells analysed on a FACSCanto flow-cytometer.

- Flow Cytometry

Flow cytometric analysis of human lymphocytes with CD4 recombinant monoclonal antibody, clone MT310 (Cat # RAB03296). Human lymphocytes were stained with an isotype control (3.0- panel A) or the rmeric version of RAB03296 (panel B) at a concentration of 1 ug/ml for 30 mins at RT. After washing- bound antibody was detected using a AF488 conjugated donkey anti-ribody ( and cells analysed on a FACSCanto flow-cytometer.

- Flow Cytometry

Flow cytometric analysis of cynomolgus monkey lymphocytes with CD4 recombinant monoclonal antibody, clone MT310 (Cat # RAB03296).

Cynomolgus monkey lymphocytes were stained with an isotype control (3.0- panel A) or the rmeric version of RAB03296 (panel B) at a concentration of 1 ug/ml for 30 mins at RT. After washing- bound antibody was detected using a AF488 conjugated donkey anti-ribody ( and cells analysed on a FACSCanto flow-cytometer.

## Gene Info — CD4

Entrez GeneID	<a href="#">920</a>
Gene Name	CD4
Gene Alias	CD4mut
Gene Description	CD4 molecule
Omim ID	<a href="#">186940</a>
Gene Ontology	<a href="#">Hyperlink</a>
Other Designations	CD4 antigen CD4 antigen (p55) CD4 receptor

## Pathway

- [Antigen processing and presentation](#)
- [Cell adhesion molecules \(CAMs\)](#)
- [Hematopoietic cell lineage](#)
- [Primary immunodeficiency](#)
- [T cell receptor signaling pathway](#)

## Disease

- [Acquired Immunodeficiency Syndrome](#)
- [Arthritis](#)
- [Asthma](#)
- [Breast cancer](#)
- [Breast Neoplasms](#)
- [Disease Progression](#)
- [Disease Susceptibility](#)
- [Genetic Predisposition to Disease](#)
- [Head and Neck Neoplasms](#)
- [Hematologic Diseases](#)
- [Hepatitis C](#)
- [HIV Infections](#)
- [Hodgkin Disease](#)
- [Lung Neoplasms](#)
- [Lupus Erythematosus](#)
- [Lymphoproliferative Disorders](#)
- [Multiple Myeloma](#)
- [Multiple Sclerosis](#)
- [Neoplasm Recurrence](#)
- [Neoplasms](#)
- [Occupational Diseases](#)
- [Pregnancy Complications](#)
- [Pulmonary Disease](#)
- [Urinary Bladder Neoplasms](#)
- [Viremia](#)
- [Vitiligo](#)

- [Waldenstrom Macroglobulinemia](#)
- [Werner syndrome](#)