

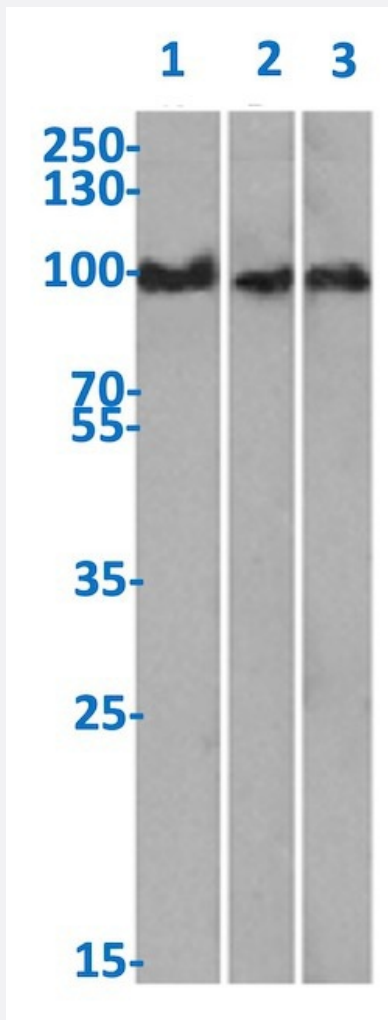
RecomAb™

SPN recombinant monoclonal antibody, clone 84-3C1

Catalog # RAB03281

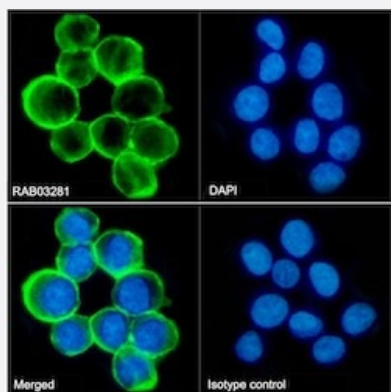
Size 200 ug

Applications



Western Blot

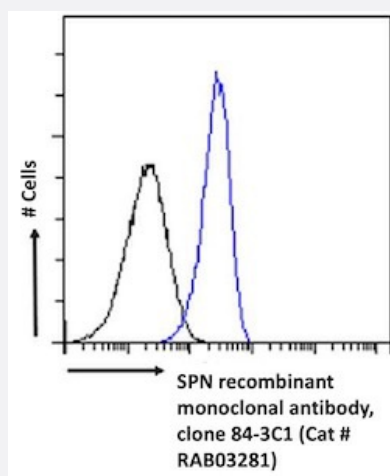
Western blot analysis of Lane 1: Daudi cell lysate, Lane 2: K562 cell lysate and Lane 3: human bone marrow tissue lysate with SPN recombinant monoclonal antibody, clone 84-3C1 (Cat # RAB03281).



Immunofluorescence

Immunofluorescent staining of K562 cells with SPN recombinant monoclonal antibody, clone 84-3C1 (Cat # RAB03281).

K562 cells on Shi-fix™ coverslips stained with the chimeric r version of RAB03281 at 10 ug/ml for 1h followed by Alexa Fluor® 488 secondary antibody (2 ug/ml)- showing membrane staining. The nuclear stain is DAPI (blue). Panels show from left-right- top-bottom RAB03281- DAPI- merged channels and an isotype control. The isotype control was an unknown specificity antibody (3.0) followed by staining with Alexa Fluor® 488 secondary antibody.



Flow Cytometry

Flow cytometric analysis of K562 cells with SPN recombinant monoclonal antibody, clone 84-3C1 (Cat # RAB03281).

K562 cells were fixed using 2% PFA and stained with anti-unknown specificity antibody (3.0; isotype control- black line) or the r1 version of RAB03281(blue line) at a dilution of 1:100 for 1h at RT. After washing- the bound antibody was detected using a goat anti-r AlexaFluor® 488 antibody at a dilution of 1:1000 and cells analyzed using a FACSCanto flow-cytometer.

Specification

Product Description	Rabbit recombinant monoclonal antibody raised against human SPN.
Antibody Species	Rabbit
Immunogen	Original antibody is raised against stimulated human leukocytes.
Reactivity	Human
Form	Liquid
Isotype	IgG kappa
Recommend Usage	Flow Cytometry Immunofluorescence Immunohistochemistry Immunoprecipitation Western Blot The optimal working dilution should be determined by the end user.

Storage Buffer

In PBS (0.02% Proclin 300)

Storage Instruction

Store at 4°C for 3 months. For long term storage store at -20°C.
Aliquot to avoid repeated freezing and thawing.

Applications

- Western Blot

Western blot analysis of Lane 1: Daudi cell lysate, Lane 2: K562 cell lysate and Lane 3: human bone marrow tissue lysate with SPN recombinant monoclonal antibody, clone 84-3C1 (Cat # RAB03281).

- Immunohistochemistry

- Immunofluorescence

Immunofluorescent staining of K562 cells with SPN recombinant monoclonal antibody, clone 84-3C1 (Cat # RAB03281). K562 cells on Shi-fix™ coverslips stained with the chimeric r version of RAB03281 at 10 ug/ml for 1h followed by Alexa Fluor® 488 secondary antibody (2 ug/ml)- showing membrane staining. The nuclear stain is DAPI (blue). Panels show from left-right-top-bottom RAB03281- DAPI- merged channels and an isotype control. The isotype control was an unknown specificity antibody (3.0) followed by staining with Alexa Fluor® 488 secondary antibody.

- Immunoprecipitation

- Flow Cytometry

Flow cytometric analysis of K562 cells with SPN recombinant monoclonal antibody, clone 84-3C1 (Cat # RAB03281). K562 cells were fixed using 2% PFA and stained with anti-unknown specificity antibody (3.0; isotype control- black line) or the r1 version of RAB03281(blue line) at a dilution of 1:100 for 1h at RT. After washing- the bound antibody was detected using a goat anti-r AlexaFluor® 488 antibody at a dilution of 1:1000 and cells analyzed using a FACSCanto flow-cytometer.

Gene Info — SPN

Entrez GeneID[6693](#)**Gene Name**

SPN

Gene Alias

CD43, GPL115, LSN

Gene Description

sialophorin

Omim ID[182160](#)**Gene Ontology**[Hyperlink](#)

Gene Summary

Sialophorin (leukosialin) is a major sialoglycoprotein on the surface of human T lymphocytes, monocytes, granulocytes, and some B lymphocytes, which appears to be important for immune function and may be part of a physiologic ligand-receptor complex involved in T-cell activation.[supplied by OMIM]

Other Designations

leukosialin|sialophorin (gpL115, leukosialin, CD43)|sialophorin (leukosialin, CD43)

Pathway

- [Cell adhesion molecules \(CAMs\)](#)

Disease

- [Kidney Failure](#)