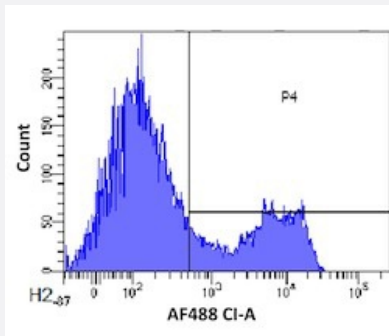


RecomAb™

Cd3e recombinant monoclonal antibody, clone 500A2

Catalog # RAB03256 Size 200 ug

Applications



Flow Cytometry

Flow cytometric analysis of mouse lymphocytes with Cd3e recombinant monoclonal antibody, clone 500A2 (Cat # RAB03256).

Mouse lymphocytes were stained with an anti-CD44 control (3.0- panel A) or the rmeric version of RAB03256 (panel B) at a concentration of 1 ug/ml for 30 mins at RT. After washing- bound antibody was detected using a AF488 conjugated donkey anti-ribody (and cells analysed on a FACSCanto flow-cytometer.

Specification

Product Description	Rabbit recombinant monoclonal antibody raised against mouse Cd3e.
Antibody Species	Rabbit
Immunogen	Original antibody is raised against T cell receptor complexes derived from mouse C6VL-BS thymom a cells (C57BL/Ka).
Reactivity	Mouse
Form	Liquid
Isotype	IgG kappa
Recommend Usage	Flow Cytometry The optimal working dilution should be determined by the end user.
Storage Buffer	In PBS (0.02% Proclin 300)
Storage Instruction	Store at 4°C for 3 months. For long term storage store at -20°C. Aliquot to avoid repeated freezing and thawing.

Applications

- Flow Cytometry

Flow cytometric analysis of mouse lymphocytes with Cd3e recombinant monoclonal antibody, clone 500A2 (Cat # RAB03256). Mouse lymphocytes were stained with an anti-CD44 control (3.0- panel A) or the rmeric version of RAB03256 (panel B) at a concentration of 1 ug/ml for 30 mins at RT. After washing- bound antibody was detected using a AF488 conjugated donkey anti-ribody (and cells analysed on a FACSCanto flow-cytometer.

Gene Info — Cd3e

Entrez GeneID	12501
Gene Name	Cd3e
Gene Alias	AI504783, CD3, CD3epsilon, T3e
Gene Description	CD3 antigen, epsilon polypeptide
Gene Ontology	Hyperlink
Gene Summary	O
Other Designations	OTTMUSP00000018104