

RecomAb™

CD2 recombinant monoclonal antibody, clone YTH 655

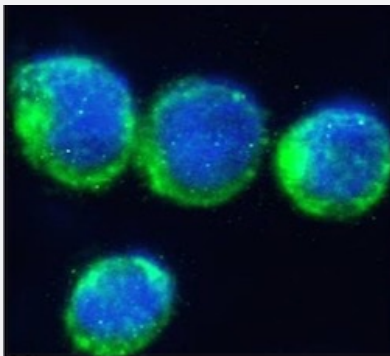
Catalog # RAB03214 Size 200 ug

Applications



Western Blot

Western blot analysis of human tonsil lysate with CD2 recombinant monoclonal antibody, clone YTH 655 (Cat # RAB03214).



Immunofluorescence

Immunofluorescent staining of Molt4 cells with CD2 recombinant monoclonal antibody, clone YTH 655 (Cat # RAB03214).

Immunofluorescence analysis of paraformaldehyde fixed Molt4 cells on Shi-fix™ coverslips- permeabilized with 0.15% Triton and stained with the chimeric r version of RAB03214 at 10 ug/ml for 1h followed by Alexa Fluor® 488 secondary antibody (1 ug/ml)- showing membrane- and some cytoplasmic staining. The nuclear stain is DAPI (blue). The isotype control was stained with an anti-Fluorescein antibody (0) followed by Alexa Fluor® 488 secondary antibody.

Specification

Product Description	Rabbit recombinant monoclonal antibody raised against human CD2.
Antibody Species	Rabbit
Reactivity	Human
Form	Liquid

Isotype	IgG
Recommend Usage	Flow Cytometry Immunofluorescence Western Blot The optimal working dilution should be determined by the end user.
Storage Buffer	In PBS with 0.02% Proclin 300
Storage Instruction	Store at 4°C for up to 3 months. For longer storage, aliquot and store at -20°C. Aliquot to avoid repeated freezing and thawing.

Applications

- Western Blot

Western blot analysis of human tonsil lysate with CD2 recombinant monoclonal antibody, clone YTH 655 (Cat # RAB03214).

- Immunofluorescence

Immunofluorescent staining of Molt4 cells with CD2 recombinant monoclonal antibody, clone YTH 655 (Cat # RAB03214).

Immunofluorescence analysis of paraformaldehyde fixed Molt4 cells on Shi-fix™ coverslips- permewith 0.15% Triton and stained with the chimeric r version of RAB03214 at 10 ug/ml for 1h followed by Alexa Fluor® 488 secondary antibody (1 ug/ml)- showing membrane- and some cytoplasmic staining. The nuclear stain is DAPI (blue). The isotype control was stained with an anti-Fluorescein antibody (0) followed by Alexa Fluor® 488 secondary antibody.

- Flow Cytometry

Gene Info — CD2

Entrez GeneID	914
Gene Name	CD2
Gene Alias	SRBC, T11
Gene Description	CD2 molecule
Omim ID	186990
Gene Ontology	Hyperlink
Gene Summary	sheep red blood cell receptor OTTHUMP00000024366 OTTHUMP00000059318 lymphocyte-function antigen-2
Other Designations	CD2 antigen (p50), sheep red blood cell receptor OTTHUMP00000024366 OTTHUMP00000059318 lymphocyte-function antigen-2

Pathway

- [Cell adhesion molecules \(CAMs\)](#)
- [Hematopoietic cell lineage](#)

Disease

- [Arthritis](#)
- [Genetic Predisposition to Disease](#)