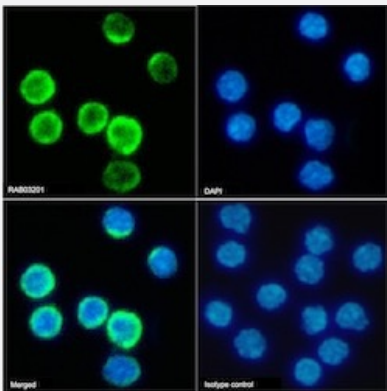


RecomAb™

## Il2ra recombinant monoclonal antibody, clone PC-61.5.3

Catalog # RAB03201      Size 200 ug

### Applications



#### Immunofluorescence

Immunofluorescent staining of mouse splenocytes with Il2ra recombinant monoclonal antibody, clone PC-61.5.3 (Cat # RAB03201).

Immunofluorescence analysis of paraformaldehyde fixed mouse splenocytes on Shi-fix™ coverslips stained with the chimeric r version of RAB03201 at 10 ug/ml for 1h followed by Alexa Fluor® 488 secondary antibody (2 ug/ml)- showing membrane staining. The nuclear stain is DAPI (blue). Panels show from left-right- top-bottom RAB03201- DAPI- merged channels and an isotype control. The isotype control was an unknown specificity antibody (.1) followed by staining with Alexa Fluor® 488 secondary antibody.

### Specification

<b>Product Description</b>	Rabbit recombinant monoclonal antibody raised against mouse Il2ra.
<b>Antibody Species</b>	Rabbit
<b>Immunogen</b>	Original antibody is raised against the B6.1 mouse cytotoxic T cell line, followed by fusing spleen cells with P3X63Ag8.653 myeloma cells.
<b>Reactivity</b>	Mouse
<b>Form</b>	Liquid
<b>Isotype</b>	IgG

Recommend Usage	ELISA
	Flow Cytometry
	Functional Study
	Immunofluorescence
	Western Blot
	The optimal working dilution should be determined by the end user.

Storage Buffer	In PBS with 0.02% Proclin 300
----------------	-------------------------------

Storage Instruction	Store at 4°C for up to 3 months. For longer storage, aliquot and store at -20°C. Aliquot to avoid repeated freezing and thawing.
---------------------	---

## Applications

- Western Blot
- Immunofluorescence

Immunofluorescent staining of mouse splenocytes with Il2ra recombinant monoclonal antibody, clone PC-61.5.3 (Cat # RAB03201).

Immunofluorescence analysis of paraformaldehyde fixed mouse splenocytes on Shi-fix™ coverslips stained with the chimeric r version of RAB03201 at 10 ug/ml for 1h followed by Alexa Fluor® 488 secondary antibody (2 ug/ml)- showing membrane staining. The nuclear stain is DAPI (blue). Panels show from left-right- top-bottom RAB03201- DAPI- merged channels and an isotype control. The isotype control was an unknown specificity antibody (.1) followed by staining with Alexa Fluor® 488 secondary antibody.

- Enzyme-linked Immunoabsorbent Assay
- Functional Study
- Flow Cytometry

## Gene Info — Il2ra

Entrez GeneID	<a href="#">16184</a>
Gene Name	Il2ra
Gene Alias	CD25, Il2r, Ly-43, MGC130561
Gene Description	interleukin 2 receptor, alpha chain
Gene Ontology	<a href="#">Hyperlink</a>
Gene Summary	O

**Other Designations**IL-2R alpha chain|OTTMUSP00000012002|p55 chain

---