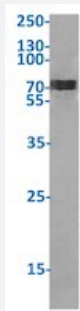


RecomAb™

Cd226 recombinant monoclonal antibody, clone 10E5

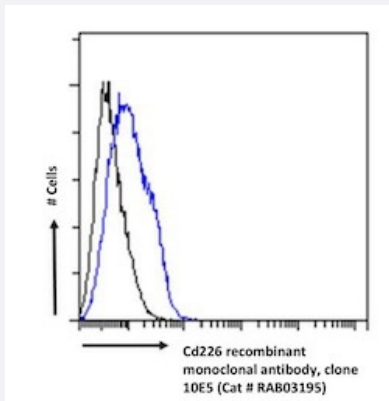
Catalog # RAB03195 Size 200 ug

Applications



Western Blot

Western blot analysis of mouse spleen tissue lysates with Cd226 recombinant monoclonal antibody, clone 10E5 (Cat # RAB03195).



Flow Cytometry

Flow cytometric analysis of mouse splenocytes with Cd226 recombinant monoclonal antibody, clone 10E5 (Cat # RAB03195).

Paraformaldehyde fixed mouse splenocytes were stained with anti-unknown specificity antibody (3.0; isotype control- black line) or the r version of RAB03195 (blue line) at a dilution of 1:100 for 1h at RT. After washing- the bound antibody was detected using a goat anti-r AlexaFluor® 488 antibody at a dilution of 1:1000 and cells analyzed using a FACSCanto flow-cytometer.

Specification

Product Description	Rabbit recombinant monoclonal antibody raised against mouse Cd226.
Antibody Species	Rabbit
Immunogen	Original antibody is raised against murine Th1 cell clone AE7 and Th1 cell lines derived from 5B6 and DO11.10 TCR transgenic mice.
Reactivity	Mouse
Form	Liquid

Isotype	IgG
Recommend Usage	Flow Cytometry Western Blot The optimal working dilution should be determined by the end user.
Storage Buffer	In PBS with 0.02% Proclin 300
Storage Instruction	Store at 4°C for up to 3 months. For longer storage, aliquot and store at -20°C. Aliquot to avoid repeated freezing and thawing.

Applications

- Western Blot

Western blot analysis of mouse spleen tissue lysates with Cd226 recombinant monoclonal antibody, clone 10E5 (Cat # RAB03195).

- Flow Cytometry

Flow cytometric analysis of mouse splenocytes with Cd226 recombinant monoclonal antibody, clone 10E5 (Cat # RAB03195). Paraformaldehyde fixed mouse splenocytes were stained with anti-unknown specificity antibody (3.0; isotype control- black line) or the r version of RAB03195 (blue line) at a dilution of 1:100 for 1h at RT. After washing- the bound antibody was detected using a goat anti-r AlexaFluor® 488 antibody at a dilution of 1:1000 and cells analyzed using a FACSCanto flow-cytometer.

Gene Info — Cd226

Entrez GeneID	225825
Gene Name	Cd226
Gene Alias	BC051526, DNAM-1, DNAM1, Pta1, TLISA1
Gene Description	CD226 antigen
Gene Ontology	Hyperlink
Other Designations	OTTMUSP00000015835 OTTMUSP00000015836 platelet and T cell activation antigen 1