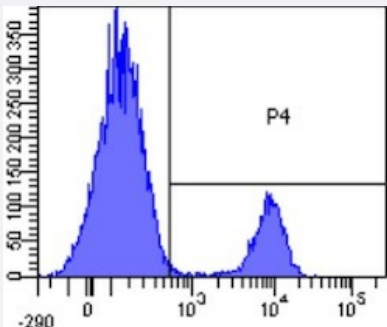


RecomAb™

CD19 recombinant monoclonal antibody, clone 4G7

Catalog # RAB03181 Size 200 ug

Applications



Flow Cytometry

Flow cytometric analysis of human lymphocytes with CD19 recombinant monoclonal antibody, clone 4G7 (Cat # RAB03181).

Human lymphocytes were stained with an isotype control (3.0- panel A) or the rmeric version of RAB03181 at a concentration of 1 ug/ml for 30 mins at RT. After washing- bound antibody was detected using a AF488 conjugated donkey anti-ribody (and cells analysed on a FACSCanto flow-cytometer.

Specification

Product Description	Rabbit recombinant monoclonal antibody raised against human CD19.
Antibody Species	Rabbit
Immunogen	Original antibody is raised against human CCL (chronic lymphocytic leukemia) cells.
Reactivity	Human
Form	Liquid
Isotype	IgG
Recommend Usage	Flow Cytometry Immunofluorescence The optimal working dilution should be determined by the end user.
Storage Buffer	In PBS with 0.02% Proclin 300
Storage Instruction	Store at 4°C for up to 3 months. For longer storage, aliquot and store at -20°C. Aliquot to avoid repeated freezing and thawing.

Applications

- Immunofluorescence
- Flow Cytometry

Flow cytometric analysis of human lymphocytes with CD19 recombinant monoclonal antibody, clone 4G7 (Cat # RAB03181). Human lymphocytes were stained with an isotype control (3.0- panel A) or the rmeric version of RAB03181 at a concentration of 1 ug/ml for 30 mins at RT. After washing- bound antibody was detected using a AF488 conjugated donkey anti-ribody (and cells analysed on a FACSCanto flow-cytometer.

Gene Info — CD19

Entrez GeneID	930
Gene Name	CD19
Gene Alias	B4, MGC12802
Gene Description	CD19 molecule
Omim ID	107265
Gene Ontology	Hyperlink
Gene Summary	Lymphocytes proliferate and differentiate in response to various concentrations of different antigens. The ability of the B cell to respond in a specific, yet sensitive manner to the various antigens is achieved with the use of low-affinity antigen receptors. This gene encodes a cell surface molecule which assembles with the antigen receptor of B lymphocytes in order to decrease the threshold for antigen receptor-dependent stimulation. [provided by RefSeq]
Other Designations	B-lymphocyte antigen CD19 CD19 antigen

Pathway

- [B cell receptor signaling pathway](#)
- [Hematopoietic cell lineage](#)
- [Primary immunodeficiency](#)

Disease

- [Arthritis](#)
- [Crohn Disease](#)
- [Genetic Predisposition to Disease](#)
- [Lupus Erythematosus](#)
- [Pemphigus](#)
- [Scleroderma](#)