

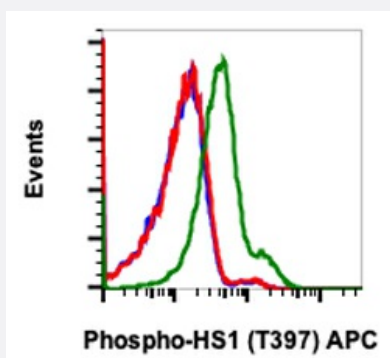
RecomAb™

# HCLS1 recombinant monoclonal antibody, clone HS1Y397-F12 (APC)

Catalog # RAB03070

Size 100 Reactions

## Applications



### Flow Cytometry

Flow cytometric analysis of Ramos cells untreated and unstained as negative control (blue) or untreated (red) or treated with pervanadate (green) and stained using Phospho-HS1 (Tyr397) APC conjugated antibody HS1Y397-F12.

## Specification

|                     |   |
|---------------------|---|
| Product Description | Rabbit recombinant monoclonal antibody raised against human HCLS1.                            |
| Antibody Species    | Rabbit  |
| Immunogen           | A synthetic phospho-peptide corresponding to residues surrounding Tyr397 of human phospho HS1 |
| Reactivity          | Human   |
| Form                | Liquid  |
| Conjugation         | APC   |
| Purification        | Protein A purification, Protein G purification  |
| Isotype             | IgG   |
| Recommend Usage     | Flow Cytometry<br>The optimal working dilution should be determined by the end user.          |

|                     |  |
|---------------------|--|
| Storage Buffer      | In PBS (0.2% BSA, 0.09% Sodium azide)  |
| Storage Instruction | Store at 4°C. Do not freeze.   |
| Note                | This product contains sodium azide: a POISONOUS AND HAZARDOUS SUBSTANCE which should be handled by trained staff only. |

## Applications

- Flow Cytometry

Flow cytometric analysis of Ramos cells untreated and unstained as negative control (blue) or untreated (red) or treated with pervanadate (green) and stained using Phospho-HS1 (Tyr397) APC conjugated antibody HS1Y397-F12.

## Gene Info — HCLS1

|                    |   |
|--------------------|---|
| Entrez GeneID      | <a href="#">3059</a>                        |
| Protein Accession# | <a href="#">P14317</a>                      |
| Gene Name          | HCLS1                                       |
| Gene Alias         | CTTNL, HS1                                  |
| Gene Description   | hematopoietic cell-specific Lyn substrate 1 |
| Omim ID            | <a href="#">601306</a>                      |
| Gene Ontology      | <a href="#">Hyperlink</a>                   |
| Other Designations | cortactin-like                              |

## Pathway

- [Pathogenic Escherichia coli infection - EHEC](#)
- [Tight junction](#)

## Disease

- [Kidney Failure](#)

- [Lupus Erythematosus](#)