

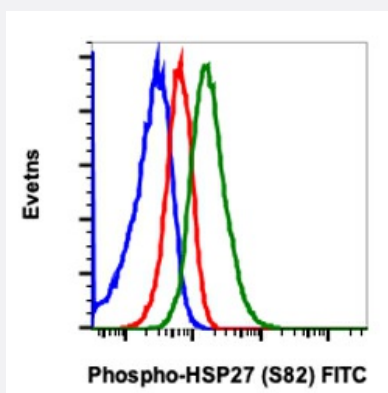
RecomAb™

HSPB1 recombinant monoclonal antibody, clone HSP27S82-CB2 (FITC)

Catalog # RAB03060

Size 100 Reactions

Applications



Flow Cytometry

Flow cytometric analysis of HeLa cells unstained and untreated cells as negative control (blue) or untreated (red) or treated with UV and TPA (green) and stained using Phospho-HSP27-CB2 (Ser82) antibody HSP27S82-CB2 FITC conjugate at 0.05 ug/mL.

Specification

Product Description	Rabbit recombinant monoclonal antibody raised against human HSPB1.
Antibody Species	Rabbit
Immunogen	A synthetic phospho-peptide corresponding to residues surrounding Ser82 of human phospho Hsp27
Reactivity	Human
Form	Liquid
Conjugation	FITC
Purification	Protein A purification, Protein G purification
Isotype	IgG

Recommend Usage	Flow Cytometry The optimal working dilution should be determined by the end user.
Storage Buffer	In PBS (0.2% BSA, 0.09% Sodium azide)
Storage Instruction	Store at 4°C. Do not freeze.
Note	This product contains sodium azide: a POISONOUS AND HAZARDOUS SUBSTANCE which should be handled by trained staff only.

Applications

- Flow Cytometry

Flow cytometric analysis of HeLa cells unstained and untreated cells as as negative control (blue) or untreated (red) or treated with UV and TPA (green) and stained using Phospho-HSP27-CB2 (Ser82) antibody HSP27S82-CB2 FITC conjugate at 0.05 ug/mL.

Gene Info — HSPB1

Entrez GeneID	3315
Protein Accession#	P04792
Gene Name	HSPB1
Gene Alias	CMT2F, DKFZp586P1322, HMN2B, HS.76067, HSP27, HSP28, Hsp25, SRP27
Gene Description	heat shock 27kDa protein 1
Omim ID	602195 606595 608634
Gene Ontology	Hyperlink
Gene Summary	The protein encoded by this gene is induced by environmental stress and developmental changes . The encoded protein is involved in stress resistance and actin organization and translocates from the cytoplasm to the nucleus upon stress induction. Defects in this gene are a cause of Charcot-Marie-Tooth disease type 2F (CMT2F) and distal hereditary motor neuropathy (dHMN). [provided by RefSeq]
Other Designations	OTTHUMP00000024846 estrogen-regulated 24 kDa protein heat shock 27kD protein 1 heat shock protein beta-1 stress-responsive protein 27

Pathway

- [MAPK signaling pathway](#)
- [VEGF signaling pathway](#)

Disease

- [Adenocarcinoma](#)
- [Carcinoma](#)
- [Charcot-Marie-Tooth Disease](#)
- [Diabetic Nephropathies](#)
- [Genetic Predisposition to Disease](#)
- [Lung Neoplasms](#)
- [Small Cell Lung Carcinoma](#)