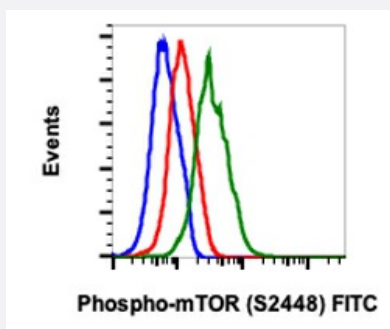


RecomAb™

# MTOR recombinant monoclonal antibody, clone mTORS2448-E11 (FITC)

Catalog # RAB03057      Size 100 Reactions

## Applications



### Flow Cytometry

Flow cytometric analysis of A431 cells treated with phosphatase and unstained as negative control (blue) or treated with phosphatase (red) or EGF (green) and stained using Phospho-mTOR (Ser2448) FITC conjugated antibody mTORS2448-E11.

## Specification

Product Description	Rabbit recombinant monoclonal antibody raised against human MTOR.
Antibody Species	Rabbit
Immunogen	A synthetic phospho-peptide corresponding to residues surrounding Ser2448 of human phospho mTOR
Reactivity	Human
Form	Liquid
Conjugation	FITC
Purification	Protein A purification, Protein G purification
Isotype	IgG
Recommend Usage	Flow Cytometry The optimal working dilution should be determined by the end user.

<b>Storage Buffer</b>	In PBS (0.2% BSA, 0.09% Sodium azide)
<b>Storage Instruction</b>	Store at 4°C. Do not freeze.
<b>Note</b>	This product contains sodium azide: a POISONOUS AND HAZARDOUS SUBSTANCE which should be handled by trained staff only.

## Applications

- Flow Cytometry

Flow cytometric analysis of A431 cells treated with phosphatase and unstained as negative control (blue) or treated with phosphatase (red) or EGF (green) and stained using Phospho-mTOR (Ser2448) FITC conjugated antibody mTORS2448-E11.

## Gene Info — MTOR

<b>Entrez GeneID</b>	<a href="#">2475</a>
<b>Protein Accession#</b>	<a href="#">P42345</a>
<b>Gene Name</b>	MTOR
<b>Gene Alias</b>	FRAP, FRAP1, FRAP2, RAFT1, RAPT1
<b>Gene Description</b>	mechanistic target of rapamycin
<b>Omim ID</b>	<a href="#">601231</a>
<b>Gene Ontology</b>	<a href="#">Hyperlink</a>
<b>Gene Summary</b>	The protein encoded by this gene belongs to a family of phosphatidylinositol kinase-related kinases. These kinases mediate cellular responses to stresses such as DNA damage and nutrient deprivation. This protein acts as the target for the cell-cycle arrest and immunosuppressive effects of the FKBP12-rapamycin complex. The ANGPTL7 gene is located in an intron of this gene. [provided by RefSeq]
<b>Other Designations</b>	FK506 binding protein 12-rapamycin associated protein 1 FK506 binding protein 12-rapamycin associated protein 2 FK506-binding protein 12-rapamycin complex-associated protein 1 FKBP-rapamycin associated protein FKBP12-rapamycin complex-associated protein 1

## Pathway

- [Acute myeloid leukemia](#)
- [Adipocytokine signaling pathway](#)

- [ErbB signaling pathway](#)
- [Glioma](#)
- [Insulin signaling pathway](#)
- [mTOR signaling pathway](#)
- [Pathways in cancer](#)
- [Prostate cancer](#)
- [Type II diabetes mellitus](#)

## Disease

- [Adenocarcinoma](#)
- [Alzheimer disease](#)
- [Cardiovascular Diseases](#)
- [Colonic Neoplasms](#)
- [Diabetes Complications](#)
- [Esophageal Neoplasms](#)
- [Kidney Failure](#)
- [Metabolic Syndrome X](#)
- [Neoplasms](#)
- [Osteoporosis](#)
- [Rectal Neoplasms](#)
- [Tobacco Use Disorder](#)