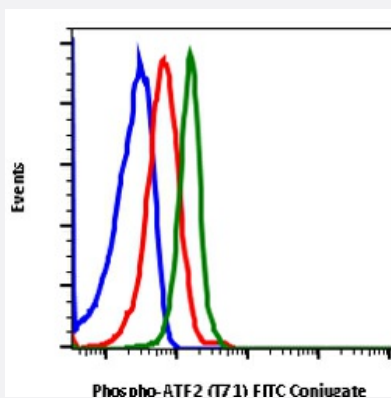


RecomAb™

ATF2 recombinant monoclonal antibody, clone ATF2T71-G3 (FITC)

Catalog # RAB02907 Size 100 Reactions

Applications



Flow Cytometry

Flow cytometric analysis of Jurkat cells secondary antibody only negative control (blue) or untreated (red) or treated with anisomycin (green) using Phospho-ATF-2 (Thr71) FITC conjugated antibody ATF2T71-G3.

Specification

Product Description	Rabbit recombinant monoclonal antibody raised against human ATF2.
Antibody Species	Rabbit
Immunogen	A synthetic phospho-peptide corresponding to residues surrounding Thr71 of human phospho ATF2
Reactivity	Human
Form	Liquid
Conjugation	FITC
Purification	Protein A purification, Protein G purification
Isotype	IgG
Recommend Usage	Flow Cytometry The optimal working dilution should be determined by the end user.

Storage Buffer	1X PBS, 0.09% Sodium azide, 0.2% BSA
Storage Instruction	Store at 4°C. Do not freeze.
Note	This product contains sodium azide: a POISONOUS AND HAZARDOUS SUBSTANCE which should be handled by trained staff only.

Applications

- Flow Cytometry

Flow cytometric analysis of Jurkat cells secondary antibody only negative control (blue) or untreated (red) or treated with anisomycin (green) using Phospho-ATF-2 (Thr71) FITC conjugated antibody ATF2T71-G3.

Gene Info — ATF2

Entrez GeneID	1386
Protein Accession#	P15366
Gene Name	ATF2
Gene Alias	CRE-BP1, CREB2, HB16, MGC111558, TREB7
Gene Description	activating transcription factor 2
Omim ID	123811
Gene Ontology	Hyperlink

Gene Summary	This gene encodes a transcription factor that is a member of the leucine zipper family of DNA binding proteins. This protein binds to the cAMP-responsive element (CRE), an octameric palindrome. The protein forms a homodimer or heterodimer with c-Jun and stimulates CRE-dependent transcription. The protein is also a histone acetyltransferase (HAT) that specifically acetylates histones H2B and H4 in vitro; thus it may represent a class of sequence-specific factors that activate transcription by direct effects on chromatin components. Additional transcript variants have been identified but their biological validity has not been determined. [provided by RefSeq]
--------------	--

Other Designations	OTTHUMP00000163262 activating transcription factor 2 splice variant ATF2-var2 cAMP responsive element binding protein 2, formerly
--------------------	---

Pathway

- [MAPK signaling pathway](#)

Disease

- [Bipolar Disorder](#)
- [Cardiovascular Diseases](#)
- [Diabetes Mellitus](#)
- [Edema](#)
- [Genetic Predisposition to Disease](#)
- [Schizophrenia](#)
- [Tobacco Use Disorder](#)