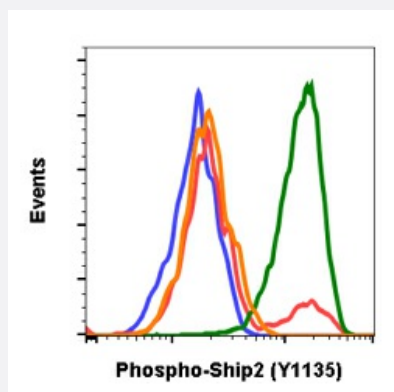


RecomAb™

INPPL1 recombinant monoclonal antibody, clone Ship2Y1135-1D2

Catalog # RAB02816 Size 200 uL

Applications



Flow Cytometry

Flow cytometric analysis of C2C12 cells secondary antibody only negative control (blue) or 1 ug/mL of isotype control (orange) or untreated (red) or treated with staurosporine (green) using Phospho-Ship2 (Tyr1135) antibody Ship2Y1135-1D2 at 1 ug/mL.

Specification

Product Description	Rabbit recombinant monoclonal antibody raised against human INPPL1.
Antibody Species	Rabbit
Immunogen	A synthetic phospho-peptide corresponding to residues surrounding Tyr1135 of human phospho Ship2
Reactivity	Human
Form	Liquid
Purification	Protein A+G
Isotype	Rabbit IgG1k
Recommend Usage	Flow Cytometry The optimal working dilution should be determined by the end user.
Storage Buffer	1X PBS, 0.02% Sodium azide, 50% Glycerol, 0.1% BSA

Storage Instruction

Store at -20°C.
Aliquot to avoid repeated freezing and thawing.

Note

This product contains sodium azide: a POISONOUS AND HAZARDOUS SUBSTANCE which should be handled by trained staff only.

Applications

- Flow Cytometry

Flow cytometric analysis of C2C12 cells secondary antibody only negative control (blue) or 1 ug/mL of isotype control (orange) or untreated (red) or treated with staurosporine (green) using Phospho-Ship2 (Tyr1135) antibody Ship2Y1135-1D2 at 1 ug/mL.

Gene Info — INPPL1

Entrez GeneID [3636](#)

Protein Accession# [O15357](#)

Gene Name INPPL1

Gene Alias SHIP2

Gene Description inositol polyphosphate phosphatase-like 1

Omim ID [600829](#)

Gene Ontology [Hyperlink](#)

Gene Summary The protein encoded by this gene is an SH2-containing 5'-inositol phosphatase that is involved in the regulation of insulin function. The encoded protein also plays a role in the regulation of epidermal growth factor receptor turnover and actin remodelling. Additionally, this gene supports metastatic growth in breast cancer and is a valuable biomarker for breast cancer. [provided by RefSeq]

Other Designations 51C protein

Pathway

- [Inositol phosphate metabolism](#)
- [Metabolic pathways](#)
- [Phosphatidylinositol signaling system](#)

Disease

- [Adenocarcinoma](#)
- [Esophageal Neoplasms](#)
- [Hypertension](#)
- [Insulin Resistance](#)
- [Metabolic Syndrome X](#)
- [Obesity](#)