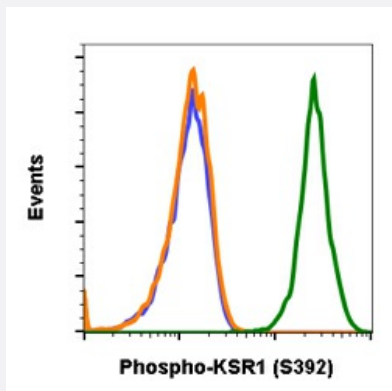


RecomAb™

# KSR1 recombinant monoclonal antibody, clone KSR1S392-3A4

Catalog # RAB02809      Size 200 uL

## Applications



### Flow Cytometry

Flow cytometric analysis of NIH3T3 cells secondary antibody only (blue) or 0.1 ug/mL of isotype control (orange) or of Phospho-KSR1(S392) antibody KSR1S392-3A4 (green).

## Specification

<b>Product Description</b>	Rabbit recombinant monoclonal antibody raised against human KSR1.
<b>Antibody Species</b>	Rabbit
<b>Immunogen</b>	A synthetic phospho-peptide corresponding to residues surrounding Ser392 of human phospho KSR1
<b>Reactivity</b>	Human
<b>Form</b>	Liquid
<b>Purification</b>	Protein A+G
<b>Isotype</b>	Rabbit IgG1k
<b>Recommend Usage</b>	Flow Cytometry The optimal working dilution should be determined by the end user.
<b>Storage Buffer</b>	1X PBS, 0.02% Sodium azide, 50% Glycerol, 0.1% BSA

**Storage Instruction**

Store at -20°C.  
Aliquot to avoid repeated freezing and thawing.

**Note**

This product contains sodium azide: a POISONOUS AND HAZARDOUS SUBSTANCE which should be handled by trained staff only.

## Applications

- Flow Cytometry

Flow cytometric analysis of NIH3T3 cells secondary antibody only (blue) or 0.1 ug/mL of isotype control (orange) or of Phospho-KSR1(S392) antibody KSR1S392-3A4 (green).

## Gene Info — KSR1

**Entrez GeneID**[8844](#)**Protein Accession#**[Q8IVT5](#)**Gene Name**

KSR1

**Gene Alias**

KSR, RSU2

**Gene Description**

kinase suppressor of ras 1

**Omim ID**[601132](#)**Gene Ontology**[Hyperlink](#)**Other Designations**

kinase suppressor of ras

## Disease

- [Tobacco Use Disorder](#)