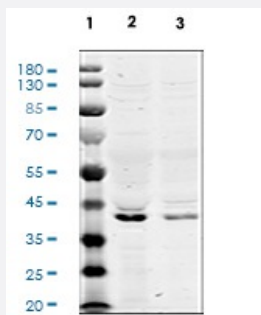


RecomAb™

MAP2K7 recombinant monoclonal antibody, clone MKK7S271T275-R4F9

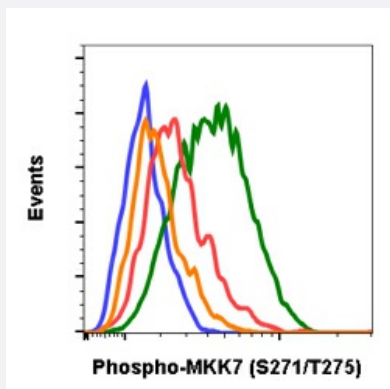
Catalog # RAB02805 Size 200 uL

Applications



Western Blot

Western blot analysis of THP1 cell extract untreated or treated with sorbitol using 0.1 ug/mL Phospho-MKK7 (Ser271/Thr275) antibody MKK7S271T275-R4F9.



Flow Cytometry

Flow cytometric analysis of C2C12 cells secondary antibody only negative control (blue) or 1 ug/mL of isotype control (orange) or untreated (red) or treated with staurosporine (green) using Phospho-MKK7 (Ser271/Thr275) antibody MKK7S271T275-R4F9 at 1 ug/mL.

Specification

Product Description	Rabbit recombinant monoclonal antibody raised against human MAP2K7.
Antibody Species	Rabbit
Immunogen	A synthetic phospho-peptide corresponding to residues surrounding Ser271/Thr275 of human phospho MKK7
Reactivity	Human

Form	Liquid
Purification	Protein A+G
Isotype	Rabbit IgG1k
Recommend Usage	Flow Cytometry Western Blot The optimal working dilution should be determined by the end user.
Storage Buffer	1X PBS, 0.02% Sodium azide, 50% Glycerol, 0.1% BSA
Storage Instruction	Store at -20°C. Aliquot to avoid repeated freezing and thawing.
Note	This product contains sodium azide: a POISONOUS AND HAZARDOUS SUBSTANCE which should be handled by trained staff only.

Applications

- Western Blot

Western blot analysis of THP1 cell extract untreated or treated with sorbitol using 0.1 ug/mL Phospho-MKK7 (Ser271/Thr275) antibody MKK7S271T275-R4F9.

- Flow Cytometry

Flow cytometric analysis of C2C12 cells secondary antibody only negative control (blue) or 1 ug/mL of isotype control (orange) or untreated (red) or treated with staurosporine (green) using Phospho-MKK7 (Ser271/Thr275) antibody MKK7S271T275-R4F9 at 1 ug/mL.

Gene Info — MAP2K7

Entrez GeneID	5609
Protein Accession#	O14733
Gene Name	MAP2K7
Gene Alias	Jnkk2, MAPKK7, MKK7, PRKMK7
Gene Description	mitogen-activated protein kinase kinase 7
Omim ID	603014
Gene Ontology	Hyperlink

Gene Summary

The protein encoded by this gene is a dual specificity protein kinase that belongs to the MAP kinase family. This kinase specifically activates MAPK8/JNK1 and MAPK9/JNK2, and this kinase itself is phosphorylated and activated by MAP kinase kinase kinases including MAP3K1/MEKK1, MAP3K2/MEKK2, MAP3K3/MEKK5, and MAP4K2/GCK. This kinase is involved in the signal transduction mediating the cell responses to proinflammatory cytokines, and environmental stresses. Multiple alternatively spliced transcript variants encoding distinct isoforms have been found, but only one transcript variant has been supported and defined. [provided by RefSeq]

Other Designations

JNK kinase 2|JNK-activating kinase 2|MAP kinase kinase 7|OTTHUMP00000174397|c-Jun N-terminal kinase kinase 2|dual specificity mitogen-activated protein kinase kinase 7

Pathway

- [ErbB signaling pathway](#)
- [Fc epsilon RI signaling pathway](#)
- [GnRH signaling pathway](#)
- [MAPK signaling pathway](#)
- [Neurotrophin signaling pathway](#)
- [T cell receptor signaling pathway](#)
- [Toll-like receptor signaling pathway](#)