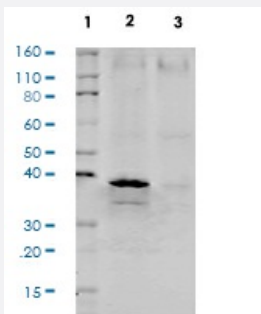


RecomAb™

CRKL recombinant monoclonal antibody, clone CrkLY207-G4

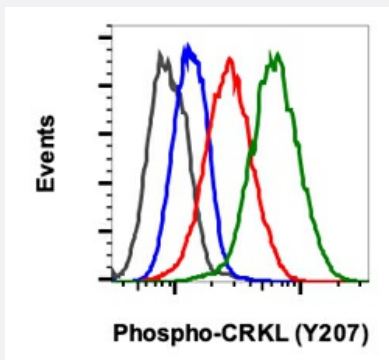
Catalog # RAB02795 Size 200 uL

Applications



Western Blot

Western blot analysis of K562 cell extract untreated or treated with imatinib using 1ng/mL CrkL (Tyr207) antibody CrkLY207-G4.



Flow Cytometry

Flow cytometric analysis of K562 cells treated with imatinib (red) or treated with pervanadate (green) using Phospho-CRKL (Tyr207) (G4) Rabbit mAb CRKLY207-G4 at 0.05 ug/mL, or concentration-matched Rabbit (G9) mAb IgG Isotype Control for cells treated with imatinib (black) or treated with pervanadate (blue).

Specification

| | |
|---------------------|--|
| Product Description | Rabbit recombinant monoclonal antibody raised against human CRKL. |
| Antibody Species | Rabbit |
| Immunogen | A synthetic phospho-peptide corresponding to residues surrounding Tyr207 of human phospho CrkL |
| Reactivity | Human |
| Form | Liquid |
| Purification | Protein A+G |

| | |
|---------------------|--|
| Isotype | Rabbit IgG1k |
| Recommend Usage | Flow Cytometry Western Blot The optimal working dilution should be determined by the end user. |
| Storage Buffer | 1X PBS, 0.02% Sodium azide, 50% Glycerol, 0.1% BSA |
| Storage Instruction | Store at -20°C. Aliquot to avoid repeated freezing and thawing. |
| Note | This product contains sodium azide: a POISONOUS AND HAZARDOUS SUBSTANCE which should be handled by trained staff only. |

Applications

- Western Blot

Western blot analysis of K562 cell extract untreated or treated with imatinib using 1ng/mL CrkL (Tyr207) antibody CrkLY207-G4.

- Flow Cytometry

Flow cytometric analysis of K562 cells treated with imatinib (red) or treated with pervanadate (green) using Phospho-CRKL (Tyr207) (G4) Rabbit mAb CRKLY207-G4 at 0.05 ug/mL, or concentration-matched Rabbit (G9) mAb IgG Isotype Control for cells treated with imatinib (black) or treated with pervanadate (blue).

Gene Info — CRKL

| | |
|--------------------|--|
| Entrez GeneID | 1399 |
| Protein Accession# | P46109 |
| Gene Name | CRKL |
| Gene Alias | - |
| Gene Description | v-crk sarcoma virus CT10 oncogene homolog (avian)-like |
| Omim ID | 602007 |
| Gene Ontology | Hyperlink |
| Gene Summary | This gene encodes a protein kinase containing SH2 and SH3 (src homology) domains which has been shown to activate the RAS and JUN kinase signaling pathways and transform fibroblasts in a RAS-dependent fashion. It is a substrate of the BCR-ABL tyrosine kinase, plays a role in fibroblast transformation by BCR-ABL, and may be oncogenic |

Other Designations

v-crk avian sarcoma virus CT10 oncogene homolog-like

Pathway

- [Chemokine signaling pathway](#)
- [Chronic myeloid leukemia](#)
- [ErbB signaling pathway](#)
- [Fc gamma R-mediated phagocytosis](#)
- [Focal adhesion](#)
- [Insulin signaling pathway](#)
- [MAPK signaling pathway](#)
- [Neurotrophin signaling pathway](#)
- [Pathways in cancer](#)
- [Regulation of actin cytoskeleton](#)
- [Renal cell carcinoma](#)

Disease

- [Cardiovascular Diseases](#)
- [Diabetes Mellitus](#)
- [Edema](#)