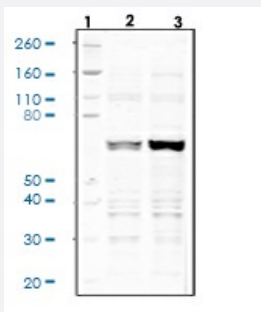


RecomAb™

ATF2 recombinant monoclonal antibody, clone ATF2T71-G3

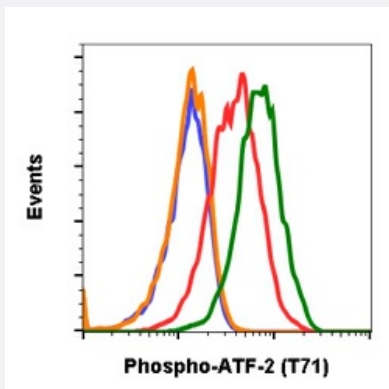
Catalog # RAB02789 Size 200 uL

Applications



Western Blot

Western blot analysis of 293T cell extract untreated or treated with UV using 0.1 ug/mL Phospho-ATF-2 (Thr71) antibody ATF2T71-G3.



Flow Cytometry

Flow cytometric analysis of NIH3T3 cells secondary antibody only negative control (blue) or 0.1 ug/mL of isotype control (orange) or untreated (red) or treated with UV and PMA (green) using Phospho-ATF-2 (Thr71) antibody ATF2T71-G3 at 0.1 ug/mL.

Specification

Product Description	Rabbit recombinant monoclonal antibody raised against human ATF2.
Antibody Species	Rabbit
Immunogen	A synthetic phospho-peptide corresponding to residues surrounding Thr71 of human phospho ATF2
Reactivity	Human
Form	Liquid

Purification	Protein A+G
Isotype	Rabbit IgG1k
Recommend Usage	Flow Cytometry Western Blot The optimal working dilution should be determined by the end user.
Storage Buffer	1X PBS, 0.02% Sodium azide, 50% Glycerol, 0.1% BSA
Storage Instruction	Store at -20°C. Aliquot to avoid repeated freezing and thawing.
Note	This product contains sodium azide: a POISONOUS AND HAZARDOUS SUBSTANCE which should be handled by trained staff only.

Applications

- Western Blot

Western blot analysis of 293T cell extract untreated or treated with UV using 0.1 ug/mL Phospho-ATF-2 (Thr71) antibody ATF2T71-G3.

- Flow Cytometry

Flow cytometric analysis of NIH3T3 cells secondary antibody only negative control (blue) or 0.1 ug/mL of isotype control (orange) or untreated (red) or treated with UV and PMA (green) using Phospho-ATF-2 (Thr71) antibody ATF2T71-G3 at 0.1 ug/mL.

Gene Info — ATF2

Entrez GeneID	1386
Protein Accession#	P15336
Gene Name	ATF2
Gene Alias	CRE-BP1, CREB2, HB16, MGC111558, TREB7
Gene Description	activating transcription factor 2
Omim ID	123811
Gene Ontology	Hyperlink

Gene Summary

This gene encodes a transcription factor that is a member of the leucine zipper family of DNA binding proteins. This protein binds to the cAMP-responsive element (CRE), an octameric palindrome. The protein forms a homodimer or heterodimer with c-Jun and stimulates CRE-dependent transcription. The protein is also a histone acetyltransferase (HAT) that specifically acetylates histones H2B and H4 in vitro; thus it may represent a class of sequence-specific factors that activate transcription by direct effects on chromatin components. Additional transcript variants have been identified but their biological validity has not been determined. [provided by RefSeq]

Other Designations

OTTHUMP00000163262|activating transcription factor 2 splice variant ATF2-var2|cAMP responsive element binding protein 2, formerly

Pathway

- [MAPK signaling pathway](#)

Disease

- [Bipolar Disorder](#)
- [Cardiovascular Diseases](#)
- [Diabetes Mellitus](#)
- [Edema](#)
- [Genetic Predisposition to Disease](#)
- [Schizophrenia](#)
- [Tobacco Use Disorder](#)