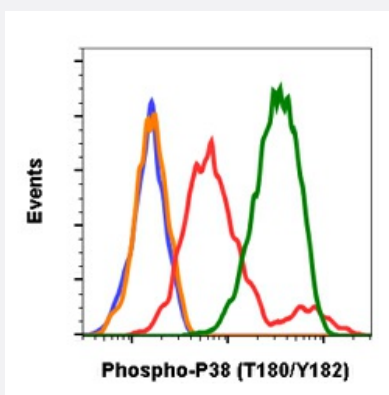


RecomAb™

# MAPK14 recombinant monoclonal antibody, clone P38T180Y182-E3

Catalog # RAB02780      Size 200 uL

## Applications



### Flow Cytometry

Flow cytometric analysis of C2C12 cells secondary antibody only negative control (blue) or 0.1 ug/mL of isotype control (orange) or untreated (red) or treated with staurosporine (green) using Phospho-p38 MAPK (Thr180/Tyr182) antibody P38T180Y182-E3 at 0.1 ug/mL.

## Specification

Product Description	Rabbit recombinant monoclonal antibody raised against human MAPK14.
Antibody Species	Rabbit
Immunogen	A synthetic phospho-peptide corresponding to residues surrounding Thr180/Tyr182 of human phospho p38 MAPK.
Reactivity	Human
Form	Liquid
Purification	Protein A+G
Isotype	Rabbit IgG1k
Recommend Usage	Flow Cytometry The optimal working dilution should be determined by the end user.

Storage Buffer	1X PBS, 0.02% Sodium azide, 50% Glycerol, 0.1% BSA
Storage Instruction	Store at -20°C. Aliquot to avoid repeated freezing and thawing.
Note	This product contains sodium azide: a POISONOUS AND HAZARDOUS SUBSTANCE which should be handled by trained staff only.

## Applications

- Flow Cytometry

Flow cytometric analysis of C2C12 cells secondary antibody only negative control (blue) or 0.1 ug/mL of isotype control (orange) or untreated (red) or treated with staurosporine (green) using Phospho-p38 MAPK (Thr180/Tyr182) antibody P38T180Y182-E3 at 0.1 ug/mL.

## Gene Info — MAPK14

Entrez GeneID	<a href="#">1432</a>
Protein Accession#	<a href="#">Q16539</a>
Gene Name	MAPK14
Gene Alias	CSBP1, CSBP2, CSPB1, EXIP, Mxi2, PRKM14, PRKM15, RK, SAPK2A, p38, p38ALPHA
Gene Description	mitogen-activated protein kinase 14
Omim ID	<a href="#">600289</a>
Gene Ontology	<a href="#">Hyperlink</a>

Gene Summary	The protein encoded by this gene is a member of the MAP kinase family. MAP kinases act as an integration point for multiple biochemical signals, and are involved in a wide variety of cellular processes such as proliferation, differentiation, transcription regulation and development. This kinase is activated by various environmental stresses and proinflammatory cytokines. The activation requires its phosphorylation by MAP kinase kinases (MKKs), or its autophosphorylation triggered by the interaction of MAP3K7IP1/TAB1 protein with this kinase. The substrates of this kinase include transcription regulator ATF2, MEF2C, and MAX, cell cycle regulator CDC25B, and tumor suppressor p53, which suggest the roles of this kinase in stress related transcription and cell cycle regulation, as well as in genotoxic stress response. Four alternatively spliced transcript variants of this gene encoding distinct isoforms have been reported. [provided by RefSeq]
--------------	---

Other Designations	Csaids binding protein MAP kinase Mxi2 MAX-interacting protein 2 cytokine suppressive anti-inflammatory drug binding protein p38 MAP kinase p38 mitogen activated protein kinase p38alpha Exip stress-activated protein kinase 2A
--------------------	---

## Pathway

- [Amyotrophic lateral sclerosis \(ALS\)](#)
- [Epithelial cell signaling in Helicobacter pylori infection](#)
- [Fc epsilon RI signaling pathway](#)
- [GnRH signaling pathway](#)
- [Leukocyte transendothelial migration](#)
- [MAPK signaling pathway](#)
- [Neurotrophin signaling pathway](#)
- [T cell receptor signaling pathway](#)
- [Toll-like receptor signaling pathway](#)
- [VEGF signaling pathway](#)

## Disease

- [Cardiovascular Diseases](#)
- [Diabetes Mellitus](#)
- [Disease Models](#)
- [Edema](#)
- [Genetic Predisposition to Disease](#)
- [HIV Infections](#)
- [Narcolepsy](#)
- [Obesity](#)
- [Ovarian Failure](#)
- [Polycystic Ovary Syndrome](#)
- [Puberty](#)
- [Schizophrenia](#)
- [Thrombophilia](#)

- [Tobacco Use Disorder](#)