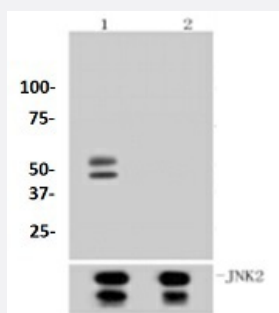


RecomAb™

# MAPK8 (Phospho T183) recombinant monoclonal antibody

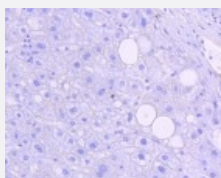
Catalog # RAB02761      Size 100 uL

## Applications



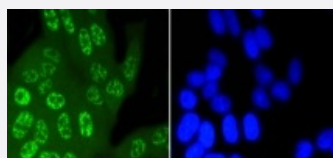
### Western Blot (Cell lysate)

Western blot analysis of Lane1:NIH/3T3 whole cell lysate treated with Anisomycin Lane2:NIH/3T3 whole cell lysate treated with TGF-beta with MAPK8 (Phospho T183) recombinant monoclonal antibody (Cat # RAB02761) at 1:1000 dilution.



### Immunohistochemistry (Formalin/PFA-fixed paraffin-embedded sections)

Immunohistochemical analysis of paraffin-embedded human liver tissue using MAPK8 (Phospho T183) recombinant monoclonal antibody (Cat # RAB02761).Counter stained with hematoxylin.



### Immunocytochemistry

Immunocytochemical staining of HeLa cells using MAPK8 (Phospho T183) recombinant monoclonal antibody (Cat # RAB02761)(green). The nuclear counter stain is DAPI (blue). Cells were fixed in paraformaldehyde, permeabilised with 0.25% Triton \*100/PBS.

## Specification

### Product Description

Rabbit recombinant monoclonal antibody raised against MAPK8.

Antibody Species	Rabbit
Immunogen	Original antibody is raised against recombinant MAPK8.
Theoretical MW (kDa)	46, 54
Reactivity	Human, Mouse, Rat
Specificity	This antibody detects endogenous levels of JNK1 protein only when phosphorylated at Thr183. This antibody also recognizes JNK2 and JNK3 when phosphorylated at the corresponding residues.
Form	Liquid
Purification	Protein A purification
Isotype	IgG
Recommend Usage	Flow Cytometry (1:50-1:100) Immunocytochemistry (1:50-1:200) Immunofluorescence (1:50-1:200) Immunohistochemistry (1:50-1:200) Western Blot (1:1000-1:2000) The optimal working dilution should be determined by the end user.
Storage Buffer	In PBS, pH7.2 (50% glycerol and 0.02% sodium azide)
Storage Instruction	Store at 4°C short term. Aliquot and store at -20°C long term. Avoid freeze-thaw cycles.
Note	This product contains sodium azide: a POISONOUS AND HAZARDOUS SUBSTANCE which should be handled by trained staff only.

## Applications

- Western Blot (Cell lysate)

Western blot analysis of Lane1:NIH/3T3 whole cell lysate treated with Anisomycin Lane2:NIH/3T3 whole cell lysate treated with TGF-beta with MAPK8 (Phospho T183) recombinant monoclonal antibody (Cat # RAB02761) at 1:1000 dilution.

- Immunohistochemistry (Formalin/PFA-fixed paraffin-embedded sections)

Immunohistochemical analysis of paraffin-embedded human liver tissue using MAPK8 (Phospho T183) recombinant monoclonal antibody (Cat # RAB02761).Counter stained with hematoxylin.

- Immunocytochemistry

Immunocytochemical staining of HeLa cells using MAPK8 (Phospho T183) recombinant monoclonal antibody (Cat # RAB02761)(green). The nuclear counter stain is DAPI (blue). Cells were fixed in paraformaldehyde, permeabilised with 0.25% Triton \*100/PBS.

- Immunofluorescence
- Flow Cytometry

## Gene Info — MAPK8

Entrez GeneID [5599](#)

Protein Accession# [P45983;P45984;P53779](#)

Gene Name MAPK8

Gene Alias JNK, JNK1, JNK1A2, JNK21B1/2, PRKM8, SAPK1

Gene Description mitogen-activated protein kinase 8

Omim ID [601158](#)

Gene Ontology [Hyperlink](#)

**Gene Summary**

The protein encoded by this gene is a member of the MAP kinase family. MAP kinases act as an integration point for multiple biochemical signals, and are involved in a wide variety of cellular processes such as proliferation, differentiation, transcription regulation and development. This kinase is activated by various cell stimuli, and targets specific transcription factors, and thus mediates immediate-early gene expression in response to cell stimuli. The activation of this kinase by tumor necrosis factor alpha (TNF-alpha) is found to be required for TNF-alpha induced apoptosis. This kinase is also involved in UV radiation induced apoptosis, which is thought to be related to cytochrome c-mediated cell death pathway. Studies of the mouse counterpart of this gene suggested that this kinase play a key role in T cell proliferation, apoptosis and differentiation. Four alternatively spliced transcript variants encoding distinct isoforms have been reported. [provided by RefSeq]

**Other Designations**

JNK1 alpha protein kinase|JNK1 beta protein kinase|JUN N-terminal kinase|OTTHUMP00000019552|OTTHUMP00000019555|OTTHUMP00000019556|OTTHUMP00000019558|c-Jun N-terminal kinase 1|mitogen-activated protein kinase 8 isoform JNK1 alpha1|mitogen-activated protein

## Pathway

- [Adipocytokine signaling pathway](#)
- [Colorectal cancer](#)
- [Epithelial cell signaling in Helicobacter pylori infection](#)
- [ErbB signaling pathway](#)
- [Fc epsilon RI signaling pathway](#)

- [Focal adhesion](#)
- [GnRH signaling pathway](#)
- [Insulin signaling pathway](#)
- [MAPK signaling pathway](#)
- [Neurotrophin signaling pathway](#)
- [Pancreatic cancer](#)
- [Pathways in cancer](#)
- [Toll-like receptor signaling pathway](#)
- [Type II diabetes mellitus](#)
- [Wnt signaling pathway](#)

## Disease

- [Breast cancer](#)
- [Breast Neoplasms](#)
- [Cardiovascular Diseases](#)
- [Diabetes Mellitus](#)
- [Edema](#)
- [Genetic Predisposition to Disease](#)
- [HIV Infections](#)