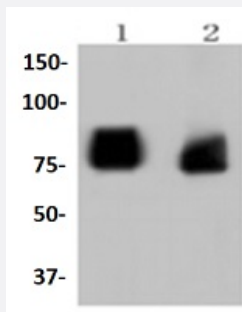


RecomAb™

ASH2L recombinant monoclonal antibody

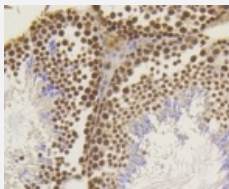
Catalog # RAB02750 Size 100 uL

Applications



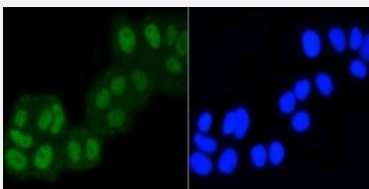
Western Blot (Cell lysate)

Western blot analysis of Lane1:PC12 whole cell lysate Lane2:293T whole cell lysate with ASH2L recombinant monoclonal antibody (Cat # RAB02750) at 1:1000 dilution.



Immunohistochemistry (Formalin/PFA-fixed paraffin-embedded sections)

Immunohistochemical analysis of paraffin-embedded mouse testis tissue using ASH2L recombinant monoclonal antibody (Cat # RAB02750). Counter stained with hematoxylin.



Immunocytochemistry

Immunocytochemical staining of MCF7 cells using ASH2L recombinant monoclonal antibody (Cat # RAB02750). Cells were fixed in paraformaldehyde, permeabilised with 0.25% Triton *100/PBS.

Specification

Product Description

Rabbit recombinant monoclonal antibody raised against ASH2L.

Antibody Species	Rabbit
Immunogen	Original antibody is raised against recombinant ASH2L.
Theoretical MW (kDa)	69
Reactivity	Human, Mouse, Rat
Specificity	This antibody detects endogenous levels of ASH2L and does not cross-react with related proteins.
Form	Liquid
Purification	Protein A purification
Isotype	IgG
Recommend Usage	Immunocytochemistry (1:200-1:500) Immunofluorescence (1:200-1:500) Immunohistochemistry (1:200-1:500) Western Blot (1:1000-1:5000) The optimal working dilution should be determined by the end user.
Storage Buffer	In PBS, pH7.2 (50% glycerol and 0.02% sodium azide)
Storage Instruction	Store at 4°C short term. Aliquot and store at -20°C long term. Avoid freeze-thaw cycles.
Note	This product contains sodium azide: a POISONOUS AND HAZARDOUS SUBSTANCE which should be handled by trained staff only.

Applications

- Western Blot (Cell lysate)

Western blot analysis of Lane1:PC12 whole cell lysate Lane2:293T whole cell lysate with ASH2L recombinant monoclonal antibody (Cat # RAB02750) at 1:1000 dilution.

- Immunohistochemistry (Formalin/PFA-fixed paraffin-embedded sections)

Immunohistochemical analysis of paraffin-embedded mouse testis tissue using ASH2L recombinant monoclonal antibody (Cat # RAB02750). Counter stained with hematoxylin.

- Immunocytochemistry

Immunocytochemical staining of MCF7 cells using ASH2L recombinant monoclonal antibody (Cat # RAB02750). Cells were fixed in paraformaldehyde, permeabilised with 0.25% Triton *100/PBS.

- Immunofluorescence

Gene Info — ASH2L

Entrez GeneID	9070
Protein Accession#	Q9UBL3
Gene Name	ASH2L
Gene Alias	ASH2, ASH2L1, ASH2L2, Bre2
Gene Description	ash2 (absent, small, or homeotic)-like (Drosophila)
Omim ID	604782
Gene Ontology	Hyperlink
Gene Summary	small
Other Designations	ash2-like