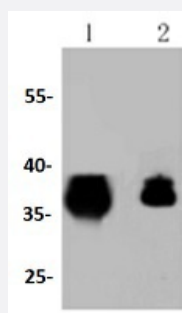


RecomAb™

EPCAM recombinant monoclonal antibody

Catalog # RAB02746 Size 100 uL

Applications



Western Blot (Cell lysate)

Western blot analysis of Lane1:HCT116 whole cell lysate Lane2:SW480 whole cell lysate with EPCAM recombinant monoclonal antibody (Cat # RAB02746) at 1:1000 dilution.

Specification

Product Description	Rabbit recombinant monoclonal antibody raised against EPCAM.
Antibody Species	Rabbit
Immunogen	Original antibody is raised against recombinant EPCAM.
Theoretical MW (kDa)	40
Reactivity	Human, Mouse, Rat
Specificity	This antibody detects endogenous levels of EPCAM and does not cross-react with related proteins.
Form	Liquid
Purification	Protein A purification
Isotype	IgG
Recommend Usage	Western Blot (1:1000-1:5000) The optimal working dilution should be determined by the end user.
Storage Buffer	In PBS, pH7.2 (50% glycerol and 0.02% sodium azide)

Storage Instruction

Store at 4°C short term.
Aliquot and store at -20°C long term.
Avoid freeze-thaw cycles.

Note

This product contains sodium azide: a POISONOUS AND HAZARDOUS SUBSTANCE which should be handled by trained staff only.

Applications

- Western Blot (Cell lysate)

Western blot analysis of Lane1:HCT116 whole cell lysate Lane2:SW480 whole cell lysate with EPCAM recombinant monoclonal antibody (Cat # RAB02746) at 1:1000 dilution.

Gene Info — EPCAM

Entrez GeneID[4072](#)**Protein Accession#**[P16422](#)**Gene Name**

EPCAM

Gene Alias

17-1A, 323/A3, CD326, CO-17A, CO17-1A, EGP, EGP-2, EGP34, EGP40, ESA, Ep-CAM, GA733-2, HEA125, KS1/4, KSA, M4S1, MH99, MIC18, MK-1, MOC31, TACST-1, TACSTD1, TROP1, hEGP-2

Gene Description

epithelial cell adhesion molecule

Omim ID[185535](#)**Gene Ontology**[Hyperlink](#)**Gene Summary**

This gene encodes a carcinoma-associated antigen and is a member of a family that includes at least two type I membrane proteins. This antigen is expressed on most normal epithelial cells and gastrointestinal carcinomas and functions as a homotypic calcium-independent cell adhesion molecule. The antigen is being used as a target for immunotherapy treatment of human carcinomas. Mutations in this gene result in congenital tufting enteropathy. [provided by RefSeq]

Other Designations

adenocarcinoma-associated antigen|carcinoma-associated antigen GA733-2|human epithelial glycoprotein-2|membrane component, chromosome 4, surface marker (35kD glycoprotein)|tumor-associated calcium signal transducer 1

Disease

- [Genetic Predisposition to Disease](#)

- [Ovarian Neoplasms](#)