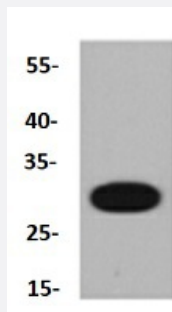


RecomAb™

# MS4A1 recombinant monoclonal antibody

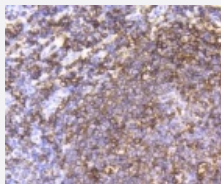
Catalog # RAB02722      Size 100 uL

## Applications



### Western Blot (Cell lysate)

Western blot analysis of Lane1:Raji whole cell lysate with MS4A1 recombinant monoclonal antibody (Cat # RAB02722) at 1:1000 dilution.



### Immunohistochemistry (Formalin/PFA-fixed paraffin-embedded sections)

Immunohistochemical analysis of paraffin-embedded human tonsil tissue using MS4A1 recombinant monoclonal antibody (Cat # RAB02722). Counter stained with hematoxylin.

## Specification

<b>Product Description</b>	Rabbit recombinant monoclonal antibody raised against MS4A1.
<b>Antibody Species</b>	Rabbit
<b>Immunogen</b>	Original antibody is raised against recombinant MS4A1.
<b>Theoretical MW (kDa)</b>	33
<b>Reactivity</b>	Human, Monkey
<b>Specificity</b>	This antibody detects endogenous levels of CD20 and does not cross-react with related proteins.

Form	Liquid
Purification	Protein A purification
Isotype	IgG
Recommend Usage	Immunohistochemistry (1:50-1:200) Western Blot (1:1000-1:5000) The optimal working dilution should be determined by the end user.
Storage Buffer	In PBS, pH7.2 (50% glycerol and 0.02% sodium azide)
Storage Instruction	Store at 4°C short term. Aliquot and store at -20°C long term. Avoid freeze-thaw cycles.
Note	This product contains sodium azide: a POISONOUS AND HAZARDOUS SUBSTANCE which should be handled by trained staff only.

## Applications

- Western Blot (Cell lysate)

Western blot analysis of Lane1:Raji whole cell lysate with MS4A1 recombinant monoclonal antibody (Cat # RAB02722) at 1:1000 dilution.

- Immunohistochemistry (Formalin/PFA-fixed paraffin-embedded sections)

Immunohistochemical analysis of paraffin-embedded human tonsil tissue using MS4A1 recombinant monoclonal antibody (Cat # RAB02722). Counter stained with hematoxylin.

## Gene Info — MS4A1

Entrez GeneID	<a href="#">931</a>
Protein Accession#	<a href="#">P11836</a>
Gene Name	MS4A1
Gene Alias	B1, Bp35, CD20, LEU-16, MGC3969, MS4A2, S7
Gene Description	membrane-spanning 4-domains, subfamily A, member 1
Omim ID	<a href="#">112210</a>
Gene Ontology	<a href="#">Hyperlink</a>

**Gene Summary**

This gene encodes a member of the membrane-spanning 4A gene family. Members of this nascent protein family are characterized by common structural features and similar intron/exon splice boundaries and display unique expression patterns among hematopoietic cells and nonlymphoid tissues. This gene encodes a B-lymphocyte surface molecule which plays a role in the development and differentiation of B-cells into plasma cells. This family member is localized to 11q12, among a cluster of family members. Alternative splicing of this gene results in two transcript variants which encode the same protein. [provided by RefSeq]

**Other Designations**

B-lymphocyte cell-surface antigen B1|CD20 antigen|CD20 receptor

**Pathway**

- [Hematopoietic cell lineage](#)

**Disease**

- [Breast cancer](#)
- [Breast Neoplasms](#)
- [Genetic Predisposition to Disease](#)
- [Lymphoma](#)
- [Neoplasm Recurrence](#)
- [Ovarian cancer](#)