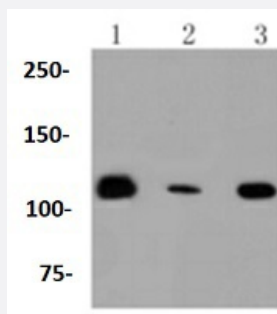


RecomAb™

RNF20 recombinant monoclonal antibody

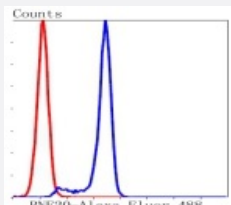
Catalog # RAB02719 Size 100 uL

Applications



Western Blot (Cell lysate)

Western blot analysis of Lane1:HeLa whole cell lysate Lane2:MCF7 whole cell lysate Lane3:Jurkat whole cell lysate with RNF20 recombinant monoclonal antibody (Cat # RAB02719) at 1:1000 dilution.



Flow Cytometry

Flow cytometric analysis of K562 cells with RNF20 recombinant monoclonal antibody (Cat # RAB02719) at 1/50 dilution (blue) compared with an unlabelled control (cells without incubation with primary antibody; red).Alexa Fluor 488-conjugated goat anti rabbit IgG was used as the secondary antibody.

Specification

Product Description	Rabbit recombinant monoclonal antibody raised against RNF20.
Antibody Species	Rabbit
Immunogen	Original antibody is raised against recombinant RNF20.
Theoretical MW (kDa)	114
Reactivity	Human, Mouse
Specificity	This antibody detects endogenous levels of RNF20 and does not cross-react with related proteins.

Form	Liquid
Purification	Protein A purification
Isotype	IgG
Recommend Usage	Flow Cytometry (1:50-1:100) Immunocytochemistry (1:50-1:200) Western Blot (1:1000) The optimal working dilution should be determined by the end user.
Storage Buffer	In PBS, pH7.2 (50% glycerol and 0.02% sodium azide)
Storage Instruction	Store at 4°C short term. Aliquot and store at -20°C long term. Avoid freeze-thaw cycles.
Note	This product contains sodium azide: a POISONOUS AND HAZARDOUS SUBSTANCE which should be handled by trained staff only.

Applications

- Western Blot (Cell lysate)

Western blot analysis of Lane1:Hela whole cell lysate Lane2:MCF7 whole cell lysate Lane3:Jurkat whole cell lysate with RNF20 recombinant monoclonal antibody (Cat # RAB02719) at 1:1000 dilution.

- Immunocytochemistry

- Flow Cytometry

Flow cytometric analysis of K562 cells with RNF20 recombinant monoclonal antibody (Cat # RAB02719) at 1/50 dilution (blue) compared with an unlabelled control (cells without incubation with primary antibody; red).Alexa Fluor 488-conjugated goat anti rabbit IgG was used as the secondary antibody.

Gene Info — RNF20

Entrez GeneID	56254
Protein Accession#	Q5VTR2
Gene Name	RNF20
Gene Alias	BRE1, BRE1A, FLJ11189, FLJ20382, KIAA2779, MGC129667, MGC129668, hBRE1
Gene Description	ring finger protein 20

Omim ID	607699
---------	------------------------

Gene Ontology	Hyperlink
---------------	---------------------------

Gene Summary	The protein encoded by this gene shares similarity with BRE1 of <i>S. cerevisiae</i> . Yeast BRE1 is a ubiquitin ligase required for the ubiquitination of histone H2B and the methylation of histone H3. [provided by RefSeq]
--------------	--

Other Designations	BRE1 E3 ubiquitin ligase homolog homolog of <i>S. cerevisiae</i> BRE1
--------------------	---