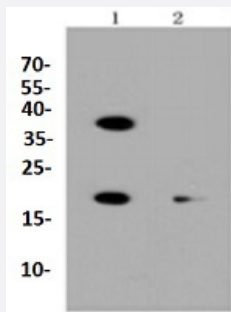


RecomAb™

BBC3 recombinant monoclonal antibody

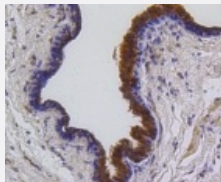
Catalog # RAB02693 Size 100 uL

Applications



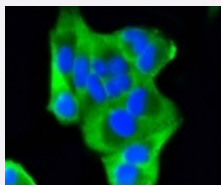
Western Blot (Cell lysate)

Western blot analysis of Lane1:HeLa whole cell lysate Lane2:K562 whole cell lysate with BBC3 recombinant monoclonal antibody (Cat # RAB02693) at 1:1000 dilution.



Immunohistochemistry (Formalin/PFA-fixed paraffin-embedded sections)

Immunohistochemical analysis of paraffin-embedded human breast carcinoma tissue using BBC3 recombinant monoclonal antibody (Cat # RAB02693). Counter stained with hematoxylin.



Immunocytochemistry

Immunocytochemical staining of HeLa cells using BBC3 recombinant monoclonal antibody (Cat # RAB02693)(green). The nuclear counter stain is DAPI (blue). Cells were fixed in paraformaldehyde, permeabilised with 0.25% Triton *100/PBS.

Specification

Product Description

Rabbit recombinant monoclonal antibody raised against BBC3.

Antibody Species	Rabbit
Immunogen	Original antibody is raised against recombinant BBC3.
Theoretical MW (kDa)	20
Reactivity	Human, Mouse, Rat
Specificity	This antibody detects endogenous levels of PUMA and does not cross-react with related proteins.
Form	Liquid
Purification	Protein A purification
Isotype	IgG
Recommend Usage	Flow Cytometry (1:50-1:100) Immunocytochemistry (1:50-1:200) Immunofluorescence (1:50-1:200) Immunohistochemistry (1:200-1:500) Western Blot (1:1000-1:2000) The optimal working dilution should be determined by the end user.
Storage Buffer	In PBS, pH7.2 (50% glycerol and 0.02% sodium azide)
Storage Instruction	Store at 4°C short term. Aliquot and store at -20°C long term. Avoid freeze-thaw cycles.
Note	This product contains sodium azide: a POISONOUS AND HAZARDOUS SUBSTANCE which should be handled by trained staff only.

Applications

- Western Blot (Cell lysate)

Western blot analysis of Lane1:Hela whole cell lysate Lane2:K562 whole cell lysate with BBC3 recombinant monoclonal antibody (Cat # RAB02693) at 1:1000 dilution.

- Immunohistochemistry (Formalin/PFA-fixed paraffin-embedded sections)

Immunohistochemical analysis of paraffin-embedded human breast carcinoma tissue using BBC3 recombinant monoclonal antibody (Cat # RAB02693). Counter stained with hematoxylin.

- Immunocytochemistry

Immunocytochemical staining of HeLa cells using BBC3 recombinant monoclonal antibody (Cat # RAB02693)(green). The nuclear counter stain is DAPI (blue). Cells were fixed in paraformaldehyde, permeabilised with 0.25% Triton *100/PBS.

- Immunofluorescence
- Flow Cytometry

Gene Info — BBC3

Entrez GeneID	27113
Protein Accession#	Q9BXH1
Gene Name	BBC3
Gene Alias	JFY1, PUMA
Gene Description	BCL2 binding component 3
Omim ID	605854
Gene Ontology	Hyperlink
Other Designations	Bcl-2 binding component 3

Pathway

- [p53 signaling pathway](#)