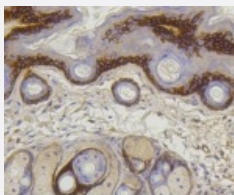


RecomAb™

# COL17A1 recombinant monoclonal antibody

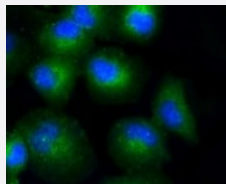
Catalog # RAB02683      Size 100 uL

## Applications



### Immunohistochemistry (Formalin/PFA-fixed paraffin-embedded sections)

Immunohistochemical analysis of paraffin-embedded mouse skin tissue using COL17A1 recombinant monoclonal antibody (Cat # RAB02683). Counter stained with hematoxylin.



### Immunocytochemistry

Immunocytochemical staining of HUVEC cells using COL17A1 recombinant monoclonal antibody (Cat # RAB02683)(green). The nuclear counter stain is DAPI (blue). Cells were fixed in paraformaldehyde, permeabilised with 0.25% Triton \*100/PBS.

## Specification

<b>Product Description</b>	Rabbit recombinant monoclonal antibody raised against COL17A1.
<b>Antibody Species</b>	Rabbit
<b>Immunogen</b>	Original antibody is raised against recombinant COL17A1.
<b>Theoretical MW (kDa)</b>	130, 180
<b>Reactivity</b>	Human, Mouse, Rat
<b>Specificity</b>	This antibody detects endogenous levels of COL17A1 and does not cross-react with related proteins.

Form	Liquid
Purification	Protein A purification
Isotype	IgG
Recommend Usage	Immunocytochemistry (1:50-1:200) Immunofluorescence (1:50-1:200) Immunohistochemistry (1:50-1:200) Western Blot (1:1000-1:2000) The optimal working dilution should be determined by the end user.
Storage Buffer	In PBS, pH7.2 (50% glycerol and 0.02% sodium azide)
Storage Instruction	Store at 4°C short term. Aliquot and store at -20°C long term. Avoid freeze-thaw cycles.
Note	This product contains sodium azide: a POISONOUS AND HAZARDOUS SUBSTANCE which should be handled by trained staff only.

## Applications

- Western Blot
- Immunohistochemistry (Formalin/PFA-fixed paraffin-embedded sections)  
Immunohistochemical analysis of paraffin-embedded mouse skin tissue using COL17A1 recombinant monoclonal antibody (Cat # RAB02683). Counter stained with hematoxylin.
- Immunocytochemistry  
Immunocytochemical staining of HUVEC cells using COL17A1 recombinant monoclonal antibody (Cat # RAB02683)(green). The nuclear counter stain is DAPI (blue). Cells were fixed in paraformaldehyde, permeabilised with 0.25% Triton \*100/PBS.
- Immunofluorescence

## Gene Info — COL17A1

Entrez GeneID	<a href="#">1308</a>
Protein Accession#	<a href="#">Q9UMD9</a>
Gene Name	COL17A1
Gene Alias	BA16H23.2, BP180, BPAG2, FLJ60881, KIAA0204, LAD-1

Gene Description	collagen, type XVII, alpha 1
Omim ID	<a href="#">113811 226650</a>
Gene Ontology	<a href="#">Hyperlink</a>
Gene Summary	<p>This gene encodes the alpha chain of type XVII collagen. Unlike most collagens, collagen XVII is a transmembrane protein. Collagen XVII is a structural component of hemidesmosomes, multiprotein complexes at the dermal-epidermal basement membrane zone that mediate adhesion of keratinocytes to the underlying membrane. Mutations in this gene are associated with both generalized atrophic benign and junctional epidermolysis bullosa. Two homotrimeric forms of type XVII collagen exist. The full length form is the transmembrane protein. A soluble form, referred to as either ectodomain or LAD-1, is generated by proteolytic processing of the full length form. [provided by RefSeq]</p>
Other Designations	OTTHUMP00000020422[alpha 1 type XVII collagen bA16H23.2 (collagen, type XVII, alpha 1 (BP 180)) bullous pemphigoid antigen 2 (180kD) collagen XVII, alpha-1 polypeptide]

## Disease

- [Alzheimer Disease](#)
- [Chronic Disease](#)
- [Genetic Predisposition to Disease](#)
- [Pemphigoid](#)
- [Periodontitis](#)
- [Tobacco Use Disorder](#)