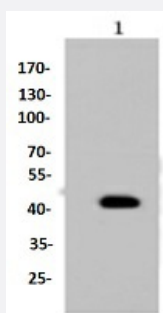


RecomAb™

# KRT19 recombinant monoclonal antibody

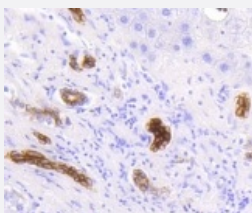
Catalog # RAB02674      Size 100 uL

## Applications



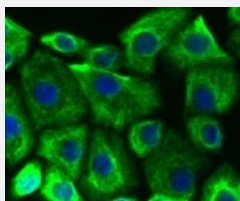
### Western Blot (Cell lysate)

Western blot analysis of Lane1:MCF7 whole cell lysate with KRT19 recombinant monoclonal antibody (Cat # RAB02674) at 1:1000 dilution.



### Immunohistochemistry (Formalin/PFA-fixed paraffin-embedded sections)

Immunohistochemical analysis of paraffin-embedded human liver tissue using KRT19 recombinant monoclonal antibody (Cat # RAB02674). Counter stained with hematoxylin.



### Immunocytochemistry

Immunocytochemical staining of A549 cells using KRT19 recombinant monoclonal antibody (Cat # RAB02674)(green). The nuclear counter stain is DAPI (blue). Cells were fixed in paraformaldehyde, permeabilised with 0.25% Triton X-100/PBS.

## Specification

### Product Description

Rabbit recombinant monoclonal antibody raised against KRT19.

Antibody Species	Rabbit
Immunogen	Original antibody is raised against recombinant KRT19.
Theoretical MW (kDa)	44
Reactivity	Human, Mouse
Specificity	This antibody detects endogenous levels of Cytokeratin 19 and does not cross-react with related proteins.
Form	Liquid
Purification	Protein A purification
Isotype	IgG
Recommend Usage	Flow Cytometry (1:10-1:100) Immunocytochemistry (1:50-1:200) Immunofluorescence (1:50-1:200) Immunohistochemistry (1:50-1:200) Western Blot (1:5000-1:10000) The optimal working dilution should be determined by the end user.
Storage Buffer	In PBS , pH7.2 (0.02% sodium azide and 50% glycerol)
Storage Instruction	Store at 4°C short term. Aliquot and store at -20°C long term. Avoid freeze-thaw cycles.
Note	This product contains sodium azide: a POISONOUS AND HAZARDOUS SUBSTANCE which should be handled by trained staff only.

## Applications

- Western Blot (Cell lysate)

Western blot analysis of Lane1:MCF7 whole cell lysate with KRT19 recombinant monoclonal antibody (Cat # RAB02674) at 1:1000 dilution.

- Immunohistochemistry (Formalin/PFA-fixed paraffin-embedded sections)

Immunohistochemical analysis of paraffin-embedded human liver tissue using KRT19 recombinant monoclonal antibody (Cat # RAB02674). Counter stained with hematoxylin.

- Immunocytochemistry

Immunocytochemical staining of A549 cells using KRT19 recombinant monoclonal antibody (Cat # RAB02674)(green). The nuclear counter stain is DAPI (blue). Cells were fixed in paraformaldehyde, permeabilised with 0.25% Triton X-100/PBS.

- Immunofluorescence
- Flow Cytometry

## Gene Info — KRT19

**Entrez GeneID** [3880](#)

**Protein Accession#** [P08727](#)

**Gene Name** KRT19

**Gene Alias** CK19, K19, K1CS, MGC15366

**Gene Description** keratin 19

**Omim ID** [148020](#)

**Gene Ontology** [Hyperlink](#)

**Gene Summary** The protein encoded by this gene is a member of the keratin family. The keratins are intermediate filament proteins responsible for the structural integrity of epithelial cells and are subdivided into cytokeratins and hair keratins. The type I cytokeratins consist of acidic proteins which are arranged in pairs of heterotypic keratin chains. Unlike its related family members, this smallest known acidic cytokeratin is not paired with a basic cytokeratin in epithelial cells. It is specifically expressed in the periderm, the transiently superficial layer that envelopes the developing epidermis. The type I cytokeratins are clustered in a region of chromosome 17q12-q21. [provided by RefSeq]

**Other Designations** 40-kDa keratin intermediate filament|cytokeratin 19|keratin, type I cytoskeletal 19|keratin, type I, 40-kd

## Disease

- [Liver Cirrhosis](#)