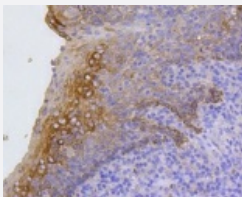


RecomAb™

# KRT17 recombinant monoclonal antibody

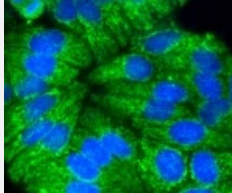
Catalog # RAB02673      Size 100 uL

## Applications



### Immunohistochemistry (Formalin/PFA-fixed paraffin-embedded sections)

Immunohistochemical analysis of paraffin-embedded human tonsil tissue using KRT17 recombinant monoclonal antibody (Cat # RAB02673). Counter stained with hematoxylin.



### Immunocytochemistry

Immunocytochemical staining of HeLa cells using KRT17 recombinant monoclonal antibody (Cat # RAB02673)(green). The nuclear counter stain is DAPI (blue). Cells were fixed in paraformaldehyde, permeabilised with 0.25% Triton \*100/PBS.

## Specification

<b>Product Description</b>	Rabbit recombinant monoclonal antibody raised against KRT17.
<b>Antibody Species</b>	Rabbit
<b>Immunogen</b>	Original antibody is raised against recombinant KRT17.
<b>Theoretical MW (kDa)</b>	48
<b>Reactivity</b>	Human, Mouse, Rat
<b>Specificity</b>	This antibody detects endogenous levels of Cytokeratin 17 and does not cross-react with related proteins.

Form	Liquid
Purification	Protein A purification
Isotype	IgG
Recommend Usage	Flow Cytometry (1:20-1:100) Immunocytochemistry (1:50-1:200) Immunofluorescence (1:50-1:200) Immunohistochemistry (1:50-1:200) Western Blot (1:500-1:1000) The optimal working dilution should be determined by the end user.
Storage Buffer	In PBS , pH7.2 (0.02% sodium azide and 50% glycerol)
Storage Instruction	Store at 4°C short term. Aliquot and store at -20°C long term. Avoid freeze-thaw cycles.
Note	This product contains sodium azide: a POISONOUS AND HAZARDOUS SUBSTANCE which should be handled by trained staff only.

## Applications

- Western Blot
- Immunohistochemistry (Formalin/PFA-fixed paraffin-embedded sections)  
Immunohistochemical analysis of paraffin-embedded human tonsil tissue using KRT17 recombinant monoclonal antibody (Cat # RAB02673). Counter stained with hematoxylin.
- Immunocytochemistry  
Immunocytochemical staining of HeLa cells using KRT17 recombinant monoclonal antibody (Cat # RAB02673)(green). The nuclear counter stain is DAPI (blue). Cells were fixed in paraformaldehyde, permeabilised with 0.25% Triton \*100/PBS.
- Immunofluorescence
- Flow Cytometry

## Gene Info — KRT17

Entrez GeneID	<a href="#">3872</a>
Protein Accession#	<a href="#">Q04695</a>

Gene Name	KRT17
Gene Alias	K17, PC, PC2, PCHC1
Gene Description	keratin 17
Omim ID	<a href="#">148069</a> <a href="#">167210</a> <a href="#">184500</a>
Gene Ontology	<a href="#">Hyperlink</a>
Gene Summary	This gene encodes the type I intermediate filament chain keratin 17, expressed in nail bed, hair follicle, sebaceous glands, and other epidermal appendages. Mutations in this gene lead to Jackson-Lawler type pachyonychia congenita and steatocystoma multiplex. [provided by RefSeq]
Other Designations	cytokeratin-17