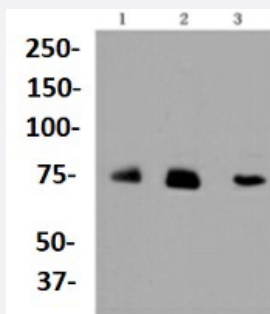


RecomAb™

# ALAS1 recombinant monoclonal antibody

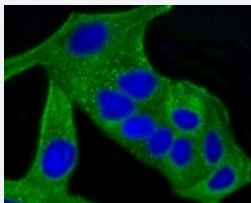
Catalog # RAB02667      Size 100 uL

## Applications



### Western Blot (Cell lysate)

Western blot analysis of Lane1:JAR whole cell lysate Lane2:HUVEC whole cell lysate Lane3:HeLa whole cell lysate with ALAS1 recombinant monoclonal antibody (Cat # RAB02667) at 1:1000 dilution.



### Immunocytochemistry

Immunocytochemical staining of HeLa cells using ALAS1 recombinant monoclonal antibody (Cat # RAB02667)(green). The nuclear counter stain is DAPI (blue). Cells were fixed in paraformaldehyde, permeabilised with 0.25% Triton \*100/PBS.

## Specification

Product Description	Rabbit recombinant monoclonal antibody raised against ALAS1.
Antibody Species	Rabbit
Immunogen	Original antibody is raised against recombinant ALAS1.
Theoretical MW (kDa)	71
Reactivity	Human
Specificity	This antibody detects endogenous levels of ALAS and does not cross-react with related proteins.

Form	Liquid
Purification	Protein A purification
Isotype	IgG
Recommend Usage	Immunocytochemistry (1:50-1:200) Immunofluorescence (1:50-1:200) Western Blot (1:1000-1:5000) The optimal working dilution should be determined by the end user.
Storage Buffer	In PBS , pH7.2 (0.02% sodium azide and 50% glycerol)
Storage Instruction	Store at 4°C short term. Aliquot and store at -20°C long term. Avoid freeze-thaw cycles.
Note	This product contains sodium azide: a POISONOUS AND HAZARDOUS SUBSTANCE which should be handled by trained staff only.

## Applications

- Western Blot (Cell lysate)

Western blot analysis of Lane1:JAR whole cell lysate Lane2:HUVEC whole cell lysate Lane3:Hela whole cell lysate with ALAS1 recombinant monoclonal antibody (Cat # RAB02667) at 1:1000 dilution.

- Immunocytochemistry

Immunocytochemical staining of HeLa cells using ALAS1 recombinant monoclonal antibody (Cat # RAB02667)(green). The nuclear counter stain is DAPI (blue). Cells were fixed in paraformaldehyde, permeabilised with 0.25% Triton \*100/PBS.

- Immunofluorescence

## Gene Info — ALAS1

Entrez GeneID	<a href="#">211</a>
Protein Accession#	<a href="#">P13196</a>
Gene Name	ALAS1
Gene Alias	ALAS, ALAS3, ALASH, MIG4
Gene Description	aminolevulinate, delta-, synthase 1
Omim ID	<a href="#">125290</a>

## Gene Ontology

[Hyperlink](#)

## Gene Summary

Delta-aminolevulinate synthase (ALAS; EC 2.3.1.37) catalyzes the condensation of glycine with succinyl-CoA to form delta-aminolevulinic acid. This nuclear-encoded mitochondrial enzyme is the first and rate-limiting enzyme in the mammalian heme biosynthetic pathway. There are 2 tissue-specific isozymes: a housekeeping enzyme encoded by the ALAS1 gene and an erythroid tissue-specific enzyme encoded by ALAS2 (MIM 301300).[supplied by OMIM]

## Other Designations

aminolevulinate, delta, synthase 1|migration-inducing protein 4

## Pathway

- [Glycine](#)
- [Metabolic pathways](#)
- [Porphyrin and chlorophyll metabolism](#)

## Disease

- [Cardiovascular Diseases](#)
- [Diabetes Mellitus](#)
- [Edema](#)