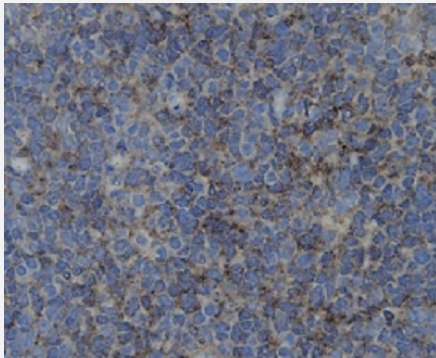


RecomAb™

TJP1 recombinant monoclonal antibody

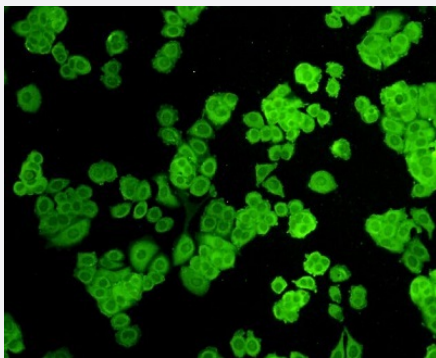
Catalog # RAB02654 Size 100 uL

Applications



Immunohistochemistry (Formalin/PFA-fixed paraffin-embedded sections)

Immunohistochemical analysis of paraffin-embedded human tonsil tissue using TJP1 recombinant monoclonal antibody (Cat # RAB02654). Counter stained with hematoxylin.



Immunocytochemistry

Immunocytochemical staining of MCF7 cells using TJP1 recombinant monoclonal antibody (Cat # RAB02654). Cells were fixed in paraformaldehyde, permeabilised with 0.25% Triton *100/PBS.

Specification

Product Description	Rabbit recombinant monoclonal antibody raised against TJP1.
Antibody Species	Rabbit
Immunogen	Original antibody is raised against a synthetic peptide (KLH-coupled) corresponding to TJP1.
Theoretical MW (kDa)	194
Reactivity	Human, Mouse, Rat

Specificity	This antibody detects endogenous levels of ZO1 and does not cross-react with related proteins.
Form	Liquid
Purification	Peptide affinity purification
Isotype	IgG
Recommend Usage	Immunocytochemistry (1:200) Immunohistochemistry (1:200) The optimal working dilution should be determined by the end user.
Storage Buffer	In PBS , pH7.2 (0.02% sodium azide and 50% glycerol)
Storage Instruction	Store at 4°C short term. Aliquot and store at -20°C long term. Avoid freeze-thaw cycles.
Note	This product contains sodium azide: a POISONOUS AND HAZARDOUS SUBSTANCE which should be handled by trained staff only.

Applications

- Immunohistochemistry (Formalin/PFA-fixed paraffin-embedded sections)

Immunohistochemical analysis of paraffin-embedded human tonsil tissue using TJP1 recombinant monoclonal antibody (Cat # RAB02654). Counter stained with hematoxylin.

- Immunocytochemistry

Immunocytochemical staining of MCF7 cells using TJP1 recombinant monoclonal antibody (Cat # RAB02654). Cells were fixed in paraformaldehyde, permeabilised with 0.25% Triton *100/PBS.

Gene Info — TJP1

Entrez GeneID	7082
Protein Accession#	Q07157
Gene Name	TJP1
Gene Alias	DKFZp686M05161, MGC133289, ZO-1
Gene Description	tight junction protein 1 (zona occludens 1)
Omim ID	601009
Gene Ontology	Hyperlink

Gene Summary

This gene encodes a protein located on a cytoplasmic membrane surface of intercellular tight junctions. The encoded protein may be involved in signal transduction at cell-cell junctions. Two transcript variants encoding distinct isoforms have been identified for this gene. [provided by RefSeq]

Other Designations

OTTHUMP00000174520|tight junction protein 1|tight junction protein ZO-1|zona occludens 1|zonula occludens 1 protein

Pathway

- [Adherens junction](#)
- [Epithelial cell signaling in Helicobacter pylori infection](#)
- [Gap junction](#)
- [Tight junction](#)
- [Vibrio cholerae infection](#)