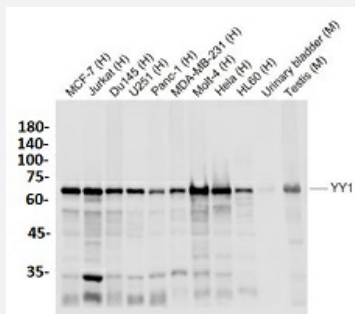


RecomAb™

YY1 recombinant monoclonal antibody

Catalog # RAB02640 Size 100 uL

Applications



Western Blot (Tissue lysate)

Western blot analysis with YY1 recombinant monoclonal antibody (Cat # RAB02640) at 1:1000 dilution.

Specification

Product Description	Rabbit recombinant monoclonal antibody raised against human YY1.
Antibody Species	Rabbit
Immunogen	Original antibody is raised against recombinant human YY1.
Theoretical MW (kDa)	65, 68
Reactivity	Human, Mouse
Specificity	This antibody detects endogenous levels of YY1 protein.
Form	Liquid
Purification	Protein A purification
Isotype	IgG
Recommend Usage	Western Blot (1:500-1:2000) The optimal working dilution should be determined by the end user.
Storage Buffer	In 0.01M TBS, pH7.4 (1% BSA, 0.03% Proclin300 and 50% Glycerol)

Storage Instruction

Store at 4°C short term.
Aliquot and store at -20°C long term.
Avoid freeze-thaw cycles.

Applications

- Western Blot (Tissue lysate)

Western blot analysis with YY1 recombinant monoclonal antibody (Cat # RAB02640) at 1:1000 dilution.

Gene Info — YY1

Entrez GeneID [7528](#)

Protein Accession# [P25490](#)

Gene Name YY1

Gene Alias DELTA, INO80S, NF-E1, UCRBP, YIN-YANG-1

Gene Description YY1 transcription factor

Omim ID [600013](#)

Gene Ontology [Hyperlink](#)

Gene Summary YY1 is a ubiquitously distributed transcription factor belonging to the GLI-Kruppel class of zinc finger proteins. The protein is involved in repressing and activating a diverse number of promoters. YY1 may direct histone deacetylases and histone acetyltransferases to a promoter in order to activate or repress the promoter, thus implicating histone modification in the function of YY1. [provided by RefSeq]

Other Designations INO80 complex subunit S|Yin and Yang 1 protein

Disease

- [Cardiovascular Diseases](#)
- [Diabetes Mellitus](#)
- [Edema](#)