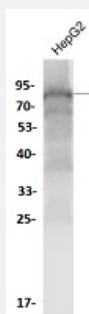


RecomAb™

YAP1 (Phospho S127) recombinant monoclonal antibody

Catalog # RAB02637 Size 100 uL

Applications



Western Blot (Cell lysate)

Western blot analysis with YAP1 (Phospho S127) recombinant monoclonal antibody (Cat # RAB02637) at 1:1000 dilution.

Specification

Product Description	Rabbit recombinant monoclonal antibody raised against human YAP1.
Antibody Species	Rabbit
Immunogen	Original antibody is raised against KLH conjugated Synthesised phosphopeptide derived from human YAP1 around the phosphorylation site of Ser127.
Theoretical MW (kDa)	70
Reactivity	Human
Specificity	This antibody detects endogenous levels of YAP1 protein only when phosphorylated at Ser127.
Form	Liquid
Purification	Protein A purification
Isotype	IgG
Recommend Usage	Flow Cytometry (2 ug) Western Blot (1:500-1:1000) The optimal working dilution should be determined by the end user.

Storage Buffer	In 0.01M TBS, pH7.4 (1% BSA, 0.03% Proclin300 and 50% Glycerol)
Storage Instruction	Store at 4°C short term. Aliquot and store at -20°C long term. Avoid freeze-thaw cycles.

Applications

- Western Blot (Cell lysate)

Western blot analysis with YAP1 (Phospho S127) recombinant monoclonal antibody (Cat # RAB02637) at 1:1000 dilution.

- Flow Cytometry

Gene Info — YAP1

Entrez GeneID	10413
Protein Accession#	P46937
Gene Name	YAP1
Gene Alias	YAP, YAP2, YAP65, YKI
Gene Description	Yes-associated protein 1, 65kDa
Omim ID	606608
Gene Ontology	Hyperlink
Gene Summary	This gene encodes the human ortholog of chicken YAP protein which binds to the SH3 domain of the Yes proto-oncogene product. This protein contains a WW domain that is found in various structural, regulatory and signaling molecules in yeast, nematode, and mammals, and may be involved in protein-protein interaction. [provided by RefSeq]
Other Designations	yes-associated protein 2

Disease

- [Tobacco Use Disorder](#)