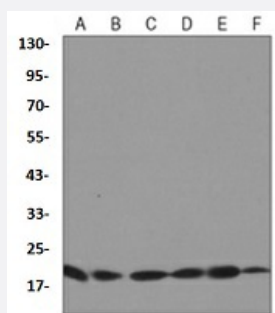


RecomAb™

UBE2I recombinant monoclonal antibody

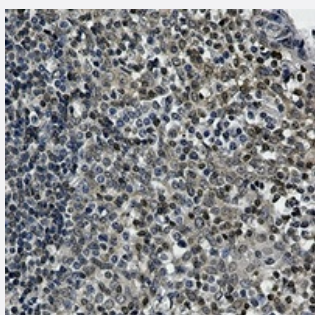
Catalog # RAB02616 Size 100 uL

Applications



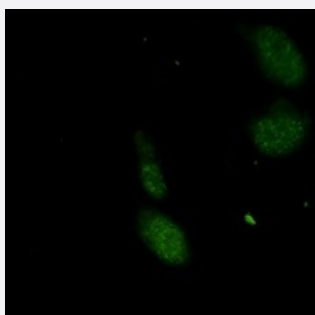
Western Blot (Cell lysate)

Western blot analysis of HeLa (A), A549 (B), HL60 (C), NIH3T3 (D), PC12 (E), MEF (F) whole cell lysates with UBE2I recombinant monoclonal antibody (Cat # RAB02616).



Immunohistochemistry (Formalin/PFA-fixed paraffin-embedded sections)

Immunohistochemical analysis of human tonsil formalin fixed paraffin embedded tissue section using UBE2I recombinant monoclonal antibody (Cat # RAB02616). The section was pre-treated using heat mediated antigen retrieval with sodium citrate buffer (pH 6.132). The section was then incubated with the antibody at room temperature and detected using an HRP conjugated compact polymer system. DAB was used as the chromogen. The section was then counterstained with haematoxylin and mounted with DPX.



Immunofluorescence

Immunofluorescent analysis of HeLa cells with UBE2I recombinant monoclonal antibody (Cat # RAB02616). Formalin-fixed cells were permeabilized with 0.1% Triton X-100 in TBS for 5-10 minutes and blocked with 3% BSA-PBS for 30 minutes at room temperature. Cells were probed with the primary antibody in 3% BSA-PBS and incubated overnight at 4 °C in a humidified chamber. Cells were washed with PBST and incubated with a AF488-conjugated secondary antibody (green) in PBS at room temperature in the dark.

Specification

Product Description	Rabbit recombinant monoclonal antibody raised against human UBE2L.
Antibody Species	Rabbit
Immunogen	Original antibody is raised against a synthetic peptide of human UBE2L.
Theoretical MW (kDa)	17
Reactivity	Human, Mouse, Rat
Specificity	Recognizes endogenous levels of UBC9 protein.
Form	Liquid
Purification	Immunogen affinity chromatography
Isotype	IgG
Recommend Usage	Immunocytochemistry (1:50-1:100) Immunofluorescence (1:50-1:100) Immunohistochemistry (1:50-1:100) Immunoprecipitation (1:10-1:50) Western Blot (1:500-1:1000)
Storage Buffer	In 50mM Tris-Glycine, pH 7.4 (0.15M NaCl, 50% Glycerol, 0.01% Sodium azide and 0.05% BSA)
Storage Instruction	Store at 4°C short term. Aliquot and store at -20°C long term. Avoid freeze-thaw cycles.
Note	This product contains sodium azide: a POISONOUS AND HAZARDOUS SUBSTANCE which should be handled by trained staff only.

Applications

- Western Blot (Cell lysate)

Western blot analysis of HeLa (A), A549 (B), HL60 (C), NIH3T3 (D), PC12 (E), MEF (F) whole cell lysates with UBE2L recombinant monoclonal antibody (Cat # RAB02616).

- Immunohistochemistry (Formalin/PFA-fixed paraffin-embedded sections)

Immunohistochemical analysis of human tonsil formalin fixed paraffin embedded tissue section using UBE2I recombinant monoclonal antibody (Cat # RAB02616). The section was pre-treated using heat mediated antigen retrieval with sodium citrate buffer (pH 6.132). The section was then incubated with the antibody at room temperature and detected using an HRP conjugated compact polymer system. DAB was used as the chromogen. The section was then counterstained with haematoxylin and mounted with DPX.

- Immunocytochemistry

- Immunofluorescence

Immunofluorescent analysis of HeLa cells with UBE2I recombinant monoclonal antibody (Cat # RAB02616). Formalin-fixed cells were permeabilized with 0.1% Triton X-100 in TBS for 5-10 minutes and blocked with 3% BSA-PBS for 30 minutes at room temperature. Cells were probed with the primary antibody in 3% BSA-PBS and incubated overnight at 4 °C in a humidified chamber. Cells were washed with PBST and incubated with a AF488-conjugated secondary antibody (green) in PBS at room temperature in the dark.

- Immunoprecipitation

Gene Info — UBE2I

Entrez GeneID [7329](#)

Protein Accession# [P63279](#)

Gene Name UBE2I

Gene Alias C358B7.1, P18, UBC9

Gene Description ubiquitin-conjugating enzyme E2I (UBC9 homolog, yeast)

Omim ID [601661](#)

Gene Ontology [Hyperlink](#)

Gene Summary The modification of proteins with ubiquitin is an important cellular mechanism for targeting abnormal or short-lived proteins for degradation. Ubiquitination involves at least three classes of enzymes: ubiquitin-activating enzymes, or E1s, ubiquitin-conjugating enzymes, or E2s, and ubiquitin-protein ligases, or E3s. This gene encodes a member of the E2 ubiquitin-conjugating enzyme family. Four alternatively spliced transcript variants encoding the same protein have been found for this gene. [provided by RefSeq]

Other Designations SUMO-1-protein ligase|ubiquitin carrier protein|ubiquitin conjugating enzyme 9|ubiquitin-conjugating enzyme E2I|ubiquitin-conjugating enzyme E2I (homologous to yeast UBC9)|ubiquitin-conjugating enzyme UbcE2A|ubiquitin-like protein SUMO-1 conjugating enzym

Pathway

- [Ubiquitin mediated proteolysis](#)

Disease

- [Alzheimer Disease](#)
- [Breast cancer](#)
- [Breast Neoplasms](#)
- [Carcinoma](#)
- [Genetic Predisposition to Disease](#)
- [Lung Neoplasms](#)
- [Lymphatic Metastasis](#)