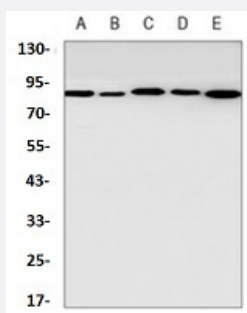


RecomAb™

# STAT5B recombinant monoclonal antibody

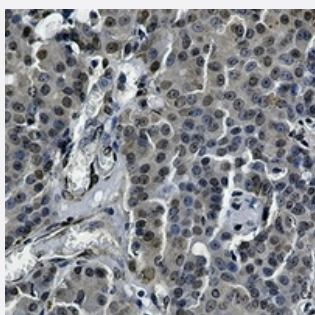
Catalog # RAB02612      Size 100 uL

## Applications



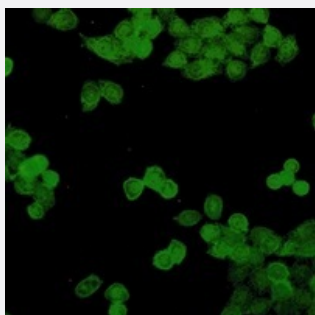
### Western Blot (Cell lysate)

Western blot analysis of HeLa (A), A549 (B), HL60 (C), Raw264.7 (D), PC12 (E) whole cell lysates with STAT5B recombinant monoclonal antibody (Cat # RAB02612).



### Immunohistochemistry (Formalin/PFA-fixed paraffin-embedded sections)

Immunohistochemical analysis of human breast carcinoma formalin fixed paraffin embedded tissue section using STAT5B recombinant monoclonal antibody (Cat # RAB02612). The section was pre-treated using heat mediated antigen retrieval with sodium citrate buffer (pH 6.25). The section was then incubated with the antibody at room temperature and detected using an HRP conjugated compact polymer system. DAB was used as the chromogen. The section was then counterstained with haematoxylin and mounted with DPX.



### Immunofluorescence

Immunofluorescent analysis of HeLa cells with STAT5B recombinant monoclonal antibody (Cat # RAB02612). Formalin-fixed cells were permeabilized with 0.1% Triton X-100 in TBS for 5-10 minutes and blocked with 3% BSA-PBS for 30 minutes at room temperature. Cells were probed with the primary antibody in 3% BSA-PBS and incubated overnight at 4 °C in a humidified chamber. Cells were washed with PBST and incubated with a AF488-conjugated secondary antibody (green) in PBS at room temperature in the dark.

## Specification

<b>Product Description</b>	Rabbit recombinant monoclonal antibody raised against human STAT5B.
<b>Antibody Species</b>	Rabbit
<b>Immunogen</b>	Original antibody is raised against recombinant protein of human STAT5B.
<b>Theoretical MW (kDa)</b>	90
<b>Reactivity</b>	Human, Mouse, Rat
<b>Specificity</b>	Recognizes endogenous levels of STAT5B protein.
<b>Form</b>	Liquid
<b>Purification</b>	Immunogen affinity chromatography
<b>Isotype</b>	IgG
<b>Recommend Usage</b>	Immunocytochemistry (1:50-1:100) Immunofluorescence (1:50-1:100) Immunohistochemistry (1:50-1:100) Immunoprecipitation (1:10-1:50) Western Blot (1:500-1:1000)
<b>Storage Buffer</b>	In 50mM Tris-Glycine, pH 7.4 (0.15M NaCl, 50% Glycerol, 0.01% Sodium azide and 0.05% BSA)
<b>Storage Instruction</b>	Store at 4°C short term. Aliquot and store at -20°C long term. Avoid freeze-thaw cycles.
<b>Note</b>	This product contains sodium azide: a POISONOUS AND HAZARDOUS SUBSTANCE which should be handled by trained staff only.

## Applications

- Western Blot (Cell lysate)

Western blot analysis of Hela (A), A549 (B), HL60 (C), Raw264.7 (D), PC12 (E) whole cell lysates with STAT5B recombinant monoclonal antibody (Cat # RAB02612).

- Immunohistochemistry (Formalin/PFA-fixed paraffin-embedded sections)

Immunohistochemical analysis of human breast carcinoma formalin fixed paraffin embedded tissue section using STAT5B recombinant monoclonal antibody (Cat # RAB02612). The section was pre-treated using heat mediated antigen retrieval with sodium citrate buffer (pH 6.25). The section was then incubated with the antibody at room temperature and detected using an HRP conjugated compact polymer system. DAB was used as the chromogen. The section was then counterstained with haematoxylin and mounted with DPX.

- Immunocytochemistry

- Immunofluorescence

Immunofluorescent analysis of HeLa cells with STAT5B recombinant monoclonal antibody (Cat # RAB02612). Formalin-fixed cells were permeabilized with 0.1% Triton X-100 in TBS for 5-10 minutes and blocked with 3% BSA-PBS for 30 minutes at room temperature. Cells were probed with the primary antibody in 3% BSA-PBS and incubated overnight at 4 °C in a humidified chamber. Cells were washed with PBST and incubated with a AF488-conjugated secondary antibody (green) in PBS at room temperature in the dark.

- Immunoprecipitation

## Gene Info — STAT5B

Entrez GeneID [6777](#)

Protein Accession# [P51692](#)

Gene Name STAT5B

Gene Alias STAT5

Gene Description signal transducer and activator of transcription 5B

Omim ID [245590 604260](#)

Gene Ontology [Hyperlink](#)

**Gene Summary**

The protein encoded by this gene is a member of the STAT family of transcription factors. In response to cytokines and growth factors, STAT family members are phosphorylated by the receptor associated kinases, and then form homo- or heterodimers that translocate to the cell nucleus where they act as transcription activators. This protein mediates the signal transduction triggered by various cell ligands, such as IL2, IL4, CSF1, and different growth hormones. It has been shown to be involved in diverse biological processes, such as TCR signaling, apoptosis, adult mammary gland development, and sexual dimorphism of liver gene expression. This gene was found to fuse to retinoic acid receptor-alpha (RARA) gene in a small subset of acute promyelocytic leukemias (APLL). The dysregulation of the signaling pathways mediated by this protein may be the cause of the APLL. [provided by RefSeq]

**Other Designations** transcription factor STAT5B

## Pathway

- [Acute myeloid leukemia](#)
- [Chemokine signaling pathway](#)
- [Chronic myeloid leukemia](#)
- [ErbB signaling pathway](#)
- [Jak-STAT signaling pathway](#)
- [Pathways in cancer](#)

## Disease

- [Birth Weight](#)
- [Breast cancer](#)
- [Breast Neoplasms](#)
- [Cardiovascular Diseases](#)
- [Cleft Lip](#)
- [Cleft Palate](#)
- [Diabetes Mellitus](#)
- [Edema](#)
- [Genetic Predisposition to Disease](#)
- [Glioblastoma](#)
- [Glioma](#)
- [Leukemia](#)
- [Meningeal Neoplasms](#)
- [Meningioma](#)
- [Tooth Abnormalities](#)