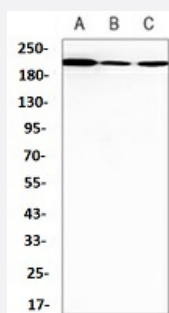


RecomAb™

# SMARCA2 recombinant monoclonal antibody

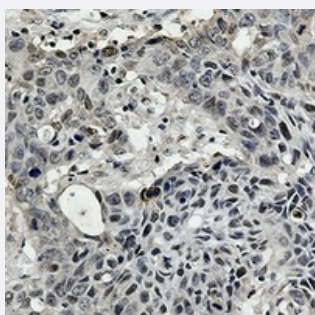
Catalog # RAB02610      Size 100 uL

## Applications



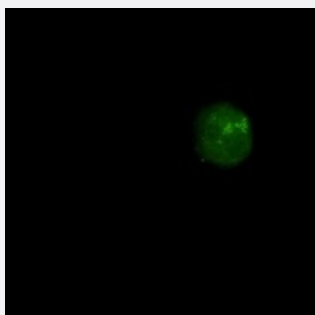
### Western Blot (Cell lysate)

Western blot analysis of A549 (A), HL60 (B), U2OS (C) whole cell lysates with SMARCA2 recombinant monoclonal antibody (Cat # RAB02610).



### Immunohistochemistry (Formalin/PFA-fixed paraffin-embedded sections)

Immunohistochemical analysis of human lung cancer formalin fixed paraffin embedded tissue section using SMARCA2 recombinant monoclonal antibody (Cat # RAB02610). The section was pre-treated using heat mediated antigen retrieval with sodium citrate buffer (pH 6.100). The section was then incubated with the antibody at room temperature and detected using an HRP conjugated compact polymer system. DAB was used as the chromogen. The section was then counterstained with haematoxylin and mounted with DPX.



### Immunofluorescence

Immunofluorescent analysis of HEK293 cells with SMARCA2 recombinant monoclonal antibody (Cat # RAB02610). Formalin-fixed cells were permeabilized with 0.1% Triton X-100 in TBS for 5-10 minutes and blocked with 3% BSA-PBS for 30 minutes at room temperature. Cells were probed with the primary antibody in 3% BSA-PBS and incubated overnight at 4 °C in a humidified chamber. Cells were washed with PBST and incubated with a AF488-conjugated secondary antibody (green) in PBS at room temperature in the dark.

## Specification

<b>Product Description</b>	Rabbit recombinant monoclonal antibody raised against human SMARCA2.
<b>Antibody Species</b>	Rabbit
<b>Immunogen</b>	Original antibody is raised against a synthetic peptide of human SMARCA2.
<b>Theoretical MW (kDa)</b>	200
<b>Reactivity</b>	Human
<b>Specificity</b>	Recognizes endogenous levels of BRM protein.
<b>Form</b>	Liquid
<b>Purification</b>	Immunogen affinity chromatography
<b>Isotype</b>	IgG
<b>Recommend Usage</b>	Immunocytochemistry (1:50-1:100) Immunofluorescence (1:50-1:100) Immunohistochemistry (1:50-1:100) Western Blot (1:500-1:1000)
<b>Storage Buffer</b>	In 50mM Tris-Glycine, pH 7.4 (0.15M NaCl, 50% Glycerol, 0.01% Sodium azide and 0.05% BSA)
<b>Storage Instruction</b>	Store at 4°C short term. Aliquot and store at -20°C long term. Avoid freeze-thaw cycles.
<b>Note</b>	This product contains sodium azide: a POISONOUS AND HAZARDOUS SUBSTANCE which should be handled by trained staff only.

## Applications

- Western Blot (Cell lysate)

Western blot analysis of A549 (A), HL60 (B), U2OS (C) whole cell lysates with SMARCA2 recombinant monoclonal antibody (Cat # RAB02610).

- Immunohistochemistry (Formalin/PFA-fixed paraffin-embedded sections)

Immunohistochemical analysis of human lung cancer formalin fixed paraffin embedded tissue section using SMARCA2 recombinant monoclonal antibody (Cat # RAB02610). The section was pre-treated using heat mediated antigen retrieval with sodium citrate buffer (pH 6.100). The section was then incubated with the antibody at room temperature and detected using an HRP conjugated compact polymer system. DAB was used as the chromogen. The section was then counterstained with haematoxylin and mounted with DPX.

- Immunocytochemistry
- Immunofluorescence

Immunofluorescent analysis of HEK293 cells with SMARCA2 recombinant monoclonal antibody (Cat # RAB02610). Formalin-fixed cells were permeabilized with 0.1% Triton X-100 in TBS for 5-10 minutes and blocked with 3% BSA-PBS for 30 minutes at room temperature. Cells were probed with the primary antibody in 3% BSA-PBS and incubated overnight at 4 °C in a humidified chamber. Cells were washed with PBST and incubated with a AF488-conjugated secondary antibody (green) in PBS at room temperature in the dark.

## Gene Info — SMARCA2

Entrez GeneID	<a href="#">6595</a>
Protein Accession#	<a href="#">P51531</a>
Gene Name	SMARCA2
Gene Alias	BAF190, BRM, FLJ36757, MGC74511, SNF2, SNF2L2, SNF2LA, SWI2, Sth1p, hBRM, hSNF2a
Gene Description	SWI/SNF related, matrix associated, actin dependent regulator of chromatin, subfamily a, member 2
Omim ID	<a href="#">600014</a>
Gene Ontology	<a href="#">Hyperlink</a>
Gene Summary	The protein encoded by this gene is a member of the SWI/SNF family of proteins and is highly similar to the brahma protein of Drosophila. Members of this family have helicase and ATPase activities and are thought to regulate transcription of certain genes by altering the chromatin structure around those genes. The encoded protein is part of the large ATP-dependent chromatin remodeling complex SNF/SWI, which is required for transcriptional activation of genes normally repressed by chromatin. Two transcript variants encoding different isoforms have been found for this gene, which contains a trinucleotide repeat (CAG) length polymorphism. [provided by RefSeq]
Other Designations	OTTHUMP00000020970 OTTHUMP00000020971 SNF2-alpha SNF2-like 2 SNF2/SWI2-like protein 2 SWI/SNF-related matrix-associated actin-dependent regulator of chromatin a2 global transcription activator homologous sequence sucrose nonfermenting 2-like protein 2

## Disease

- [Breast cancer](#)
- [Breast Neoplasms](#)
- [Schizophrenia](#)

- [Tobacco Use Disorder](#)