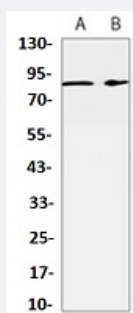


RecomAb™

RPS6KA3 recombinant monoclonal antibody

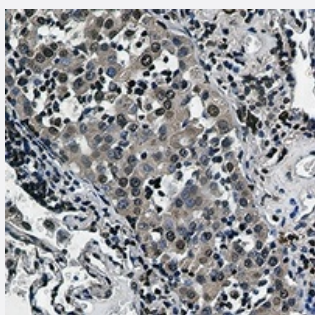
Catalog # RAB02608 Size 100 uL

Applications



Western Blot (Cell lysate)

Western blot analysis of CHOK1 (A), Ramos (B) whole cell lysates with RPS6KA3 recombinant monoclonal antibody (Cat # RAB02608).



Immunohistochemistry (Formalin/PFA-fixed paraffin-embedded sections)

Immunohistochemical analysis of human lung cancer formalin fixed paraffin embedded tissue section using RPS6KA3 recombinant monoclonal antibody (Cat # RAB02608). The section was pre-treated using heat mediated antigen retrieval with sodium citrate buffer (pH 6.98). The section was then incubated with the antibody at room temperature and detected using an HRP conjugated compact polymer system. DAB was used as the chromogen. The section was then counterstained with haematoxylin and mounted with DPX.

Specification

Product Description	Rabbit recombinant monoclonal antibody raised against human RPS6KA3.
Antibody Species	Rabbit
Immunogen	Original antibody is raised against a synthetic peptide of human RPS6KA3.
Theoretical MW (kDa)	84
Reactivity	Hamster, Human

Specificity	Recognizes endogenous levels of RSK2 protein.
Form	Liquid
Purification	Immunogen affinity chromatography
Isotype	IgG
Recommend Usage	Immunohistochemistry (1:50-1:100) Immunoprecipitation (1:10-1:50) Western Blot (1:500-1:1000)
Storage Buffer	In 50mM Tris-Glycine, pH 7.4 (0.15M NaCl, 50% Glycerol, 0.01% Sodium azide and 0.05% BSA)
Storage Instruction	Store at 4°C short term. Aliquot and store at -20°C long term. Avoid freeze-thaw cycles.
Note	This product contains sodium azide: a POISONOUS AND HAZARDOUS SUBSTANCE which should be handled by trained staff only.

Applications

- Western Blot (Cell lysate)

Western blot analysis of CHOK1 (A), Ramos (B) whole cell lysates with RPS6KA3 recombinant monoclonal antibody (Cat # RAB02608).

- Immunohistochemistry (Formalin/PFA-fixed paraffin-embedded sections)

Immunohistochemical analysis of human lung cancer formalin fixed paraffin embedded tissue section using RPS6KA3 recombinant monoclonal antibody (Cat # RAB02608). The section was pre-treated using heat mediated antigen retrieval with sodium citrate buffer (pH 6.98). The section was then incubated with the antibody at room temperature and detected using an HRP conjugated compact polymer system. DAB was used as the chromogen. The section was then counterstained with haematoxylin and mounted with DPX.

- Immunoprecipitation

Gene Info — RPS6KA3

Entrez GeneID	6197
Protein Accession#	P51812
Gene Name	RPS6KA3
Gene Alias	CLS, HU-3, ISPK-1, MAPKAPK1B, MRX19, RSK, RSK2, S6K-alpha3, p90-RSK2, pp90RSK2

Gene Description	ribosomal protein S6 kinase, 90kDa, polypeptide 3
Omim ID	300075 303600
Gene Ontology	Hyperlink
Gene Summary	This gene encodes a member of the RSK (ribosomal S6 kinase) family of serine/threonine kinase s. This kinase contains 2 non-identical kinase catalytic domains and phosphorylates various subst rates, including members of the mitogen-activated kinase (MAPK) signalling pathway. The activity of this protein has been implicated in controlling cell growth and differentiation. Mutations in this g ene have been associated with Coffin-Lowry syndrome (CLS). [provided by RefSeq
Other Designations	OTTHUMP00000023036 insulin-stimulated protein kinase 1 mental retardation, X-linked 19 ribos omal protein S6 kinase, 90kD, polypeptide 3

Pathway

- [Long-term potentiation](#)
- [MAPK signaling pathway](#)
- [mTOR signaling pathway](#)
- [Neurotrophin signaling pathway](#)

Disease

- [Head and Neck Neoplasms](#)
- [Neoplasm Recurrence](#)
- [Neoplasms](#)