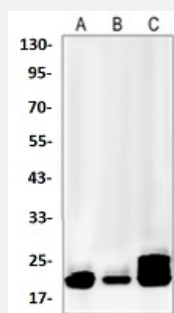


RecomAb™

CFL1 recombinant monoclonal antibody

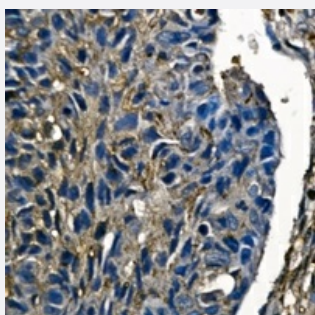
Catalog # RAB02582 Size 100 uL

Applications



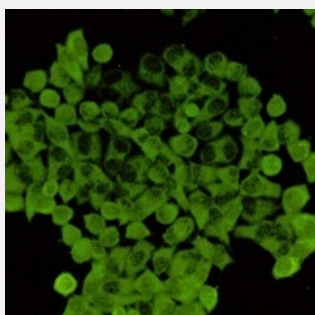
Western Blot (Cell lysate)

Western blot analysis of A549 (A), MCF7 (B), 293T (C) whole cell lysates with CFL1 recombinant monoclonal antibody (Cat # RAB02582).



Immunohistochemistry (Formalin/PFA-fixed paraffin-embedded sections)

Immunohistochemical analysis of human lung cancer formalin fixed paraffin embedded tissue section using CFL1 recombinant monoclonal antibody (Cat # RAB02582). The section was pre-treated using heat mediated antigen retrieval with sodium citrate buffer (pH 6.94). The section was then incubated with the antibody at room temperature and detected using an HRP conjugated compact polymer system. DAB was used as the chromogen. The section was then counterstained with haematoxylin and mounted with DPX.



Immunofluorescence

Immunofluorescent analysis of HeLa cells with CFL1 recombinant monoclonal antibody (Cat # RAB02582). Formalin-fixed cells were permeabilized with 0.1% Triton X-100 in TBS for 5-10 minutes and blocked with 3% BSA-PBS for 30 minutes at room temperature. Cells were probed with the primary antibody in 3% BSA-PBS and incubated overnight at 4 °C in a humidified chamber. Cells were washed with PBST and incubated with a AF488-conjugated secondary antibody (green) in PBS at room temperature in the dark.

Specification

Product Description	Rabbit recombinant monoclonal antibody raised against human CFL1.
Antibody Species	Rabbit
Immunogen	Original antibody is raised against a synthetic peptide of human CFL1.
Theoretical MW (kDa)	18
Reactivity	Human
Specificity	Recognizes endogenous levels of Cofilin protein.
Form	Liquid
Purification	Immunogen affinity chromatography
Isotype	IgG
Recommend Usage	Immunocytochemistry (1:50-1:100) Immunofluorescence (1:50-1:100) Immunohistochemistry (1:50-1:100) Western Blot (1:500-1:1000)
Storage Buffer	In 50mM Tris-Glycine, pH 7.4 (0.15M NaCl, 50% Glycerol, 0.01% Sodium azide and 0.05% BSA)
Storage Instruction	Store at 4°C short term. Aliquot and store at -20°C long term. Avoid freeze-thaw cycles.
Note	This product contains sodium azide: a POISONOUS AND HAZARDOUS SUBSTANCE which should be handled by trained staff only.

Applications

- Western Blot (Cell lysate)

Western blot analysis of A549 (A), MCF7 (B), 293T (C) whole cell lysates with CFL1 recombinant monoclonal antibody (Cat # RAB02582).

- Immunohistochemistry (Formalin/PFA-fixed paraffin-embedded sections)

Immunohistochemical analysis of human lung cancer formalin fixed paraffin embedded tissue section using CFL1 recombinant monoclonal antibody (Cat # RAB02582). The section was pre-treated using heat mediated antigen retrieval with sodium citrate buffer (pH 6.94). The section was then incubated with the antibody at room temperature and detected using an HRP conjugated compact polymer system. DAB was used as the chromogen. The section was then counterstained with haematoxylin and mounted with DPX.

- Immunocytochemistry

- Immunofluorescence

Immunofluorescent analysis of HeLa cells with CFL1 recombinant monoclonal antibody (Cat # RAB02582). Formalin-fixed cells were permeabilized with 0.1% Triton X-100 in TBS for 5-10 minutes and blocked with 3% BSA-PBS for 30 minutes at room temperature. Cells were probed with the primary antibody in 3% BSA-PBS and incubated overnight at 4 °C in a humidified chamber. Cells were washed with PBST and incubated with a AF488-conjugated secondary antibody (green) in PBS at room temperature in the dark.

Gene Info — CFL1

Entrez GeneID [1072](#)

Protein Accession# [P23528](#)

Gene Name CFL1

Gene Alias CFL

Gene Description cofilin 1 (non-muscle)

Omim ID [601442](#)

Gene Ontology [Hyperlink](#)

Gene Summary Cofilin is a widely distributed intracellular actin-modulating protein that binds and depolymerizes filamentous F-actin and inhibits the polymerization of monomeric G-actin in a pH-dependent manner. It is involved in the translocation of actin-cofilin complex from cytoplasm to nucleus.[supplied by OMIM]

Other Designations -

Pathway

- [Axon guidance](#)
- [Fc gamma R-mediated phagocytosis](#)

- [Regulation of actin cytoskeleton](#)

Disease

- [Spinal Dysraphism](#)